



Stage Equipment Catalogue





Stage Equipment Catalogue

STAGE ELEMENTS

STAGE PLATFORMS	10-15
STAIRS	16
HANDRAILS	17
ACCESSORIES	18-19

DEFENDER

CABLE PROTECTION SYSTEMS	22-35
--------------------------------	-------

STAGE FABRICS

GAUZE	38-41
BACKDROPS & CURTAINS	42-45
ACCESSORIES	46

POWER DISTRIBUTION

POWER DISTRIBUTION	50-57
--------------------------	-------

SAFETIES

SAFETIES	60-61
FLYWARE	62

TAPES

TAPES	66-71
-------------	-------

ACCESSORIES

CABLE & VELCRO	74
BATTERIES	75
GLUE & PAINT	76-77

19" EQUIPMENT

MOUNTING PARTS	80
19" PANELS	81-83
CRADLES & HOUSINGS	84
19" DRAWERS	85-86
MISCELLANEOUS	87
RACK LIGHTS	88-91



ABOUT THE ADAM HALL GROUP

The Adam Hall Group is a leading German manufacturing and distribution company providing event technology solutions around the globe to a diverse portfolio of business customers, including music instrument retailers and dealers, live event and rental companies, broadcast studios, AV and system integrators, private and public enterprises, and industrial flightcase manufacturers. The company offers a wide range of professional audio and lighting technology as well as stage equipment and flightcase hardware under its brands LD Systems®, Cameo®, Gravity®, Defender®, Palmer® and Adam Hall®.

Founded in 1975, Adam Hall Group has developed into a collection of modern, innovative event technology companies. This includes an 8,000 square metre warehouse and logistics centre at the corporate headquarters near Frankfurt am Main, Germany.

SOUND
TECHNOLOGY

LIGHT
TECHNOLOGY

STAGE
EQUIPMENT

HARDWARE
FOR FLIGHTCASES



EVENT TECHNOLOGY – IT'S A PEOPLE BUSINESS

Whether you are a music instrument retailer, live event & rental company, broadcast studio, system integrator, installer, public or private enterprise, or an industrial flightcase manufacturer, we are excited to show you the latest in event technology, award-winning innovation, top quality brands, and our superior commitment to service and satisfaction.

Experience Event Technology – and enjoy the show!

ADAM HALL BRANDS:



DISTRIBUTION BRANDS:



Markus Jahnel

David Kirby

Alexander Pietschmann



STAGE EQUIPMENT FROM ADAM HALL

Adam Hall has been your specialist for professional stage equipment since 1975. Whether for use at open-air events, in theatres, studios, community and general-purpose halls, trade shows or in the gastronomy sector, we supply a comprehensive assortment of useful event equipment for any event and for a broad range of requirements.

Adam Hall Stage Equipment offers a huge selection of stage gauze, 19" equipment and stage systems. Attachment parts such as steps, handrails, side parts and wheelchair ramps offer additional configuration options. Duct tape, foam and stage molton, right up to measuring instruments, DEKRA-approved cable protection systems and BVGC 1 safeties complete the programme.

Adam Hall Stage Equipment means that you are perfectly equipped - with high availability from a single source in the reliable Adam Hall quality that naturally conforms to event equipment standards and regulations.

READY TO ORDER?

Please feel free to give us a call. On the back of this catalogue you will find contact details for the various sales teams around the globe. Your respective sales representative is available Mon. – Fri. and is ready to help you. Further details can be found in the 'Contact' section of our website.

www.adamhall.com



 **MADE IN GERMANY**

BÜTEC STAGE PLATFORMS – QUALITY MADE IN GERMANY

Established in 1979, Bütec is a major manufacturer of professional staging equipment today. The Adam Hall Group offers a comprehensive selection of stage platforms, risers, stairs, handrails, guardrails and accessories for indoor and outdoor stage systems. Bütec products are made in Germany to the highest standards and GS certified.



STAGE ELEMENTS

STAGE PLATFORMS	10-15
STAIRS	16
HANDRAILS	17
ACCESSORIES	18-19

ECO 1 UNIVERSAL SERIES

The BÜTEC Eco 1 - Universal makes universal access to many other stage systems. The ergonomic - specially designed frame makes it possible! Different staging systems in different locations and events, ask for the user no longer a problem with the BÜTEC Eco 1 - Universal platform, the frame profile fits to almost any foreign - stage effortlessly, with no special brackets are attached.



- B3010101**
STAGE PLATFORM INDOOR
2 X 1 M
- Frame material: aluminium
 - Flooring material: Beech wood core plywood
 - Thickness of flooring material: 22 mm
 - Width: 2 m
 - Depth: 1 m
 - Stacking height: 10 cm
 - Max. load: 750 kg

Shape:




- B3010201**
STAGE PLATFORM OUTDOOR
2 X 1 M
- Frame material: aluminium
 - Flooring material: screen print plate
 - Thickness of flooring material: 22 mm
 - Width: 2 m
 - Depth: 1 m
 - Stacking height: 10 cm
 - Max. load: 750 kg

Shape:


ECO 1 UNIVERSAL SERIES




- B3010102**
STAGE PLATFORM INDOOR
2 X 0,5 M
- Frame material: aluminium
 - Flooring material: Beech wood core plywood
 - Thickness of flooring material: 22 mm
 - Width: 2 m
 - Depth: 0.5 m
 - Stacking height: 10 cm
 - Max. load: 750 kg

Shape:




- B3010202**
STAGE PLATFORM OUTDOOR
2 X 0,5 M
- Frame material: aluminium
 - Flooring material: screen print plate
 - Thickness of flooring material: 22 mm
 - Width: 2 m
 - Depth: 0.5 m
 - Stacking height: 10 cm
 - Max. load: 750 kg

Shape:




- B3010104**
STAGE PLATFORM INDOOR
1 X 1 M
- Frame material: aluminium
 - Flooring material: Beech wood core plywood
 - Thickness of flooring material: 22 mm
 - Width: 1 m
 - Depth: 1 m
 - Stacking height: 10 cm
 - Max. load: 750 kg

Shape:




- B3010204**
STAGE PLATFORM OUTDOOR
1 X 1 M
- Frame material: aluminium
 - Flooring material: screen print plate
 - Thickness of flooring material: 22 mm
 - Width: 1 m
 - Depth: 1 m
 - Stacking height: 10 cm
 - Max. load: 750 kg

Shape:


ECO 1 UNIVERSAL SERIES



B3010110
STAGE PLATFORM INDOOR
1 X 0.5 M

- Frame material: aluminium
- Flooring material: Beech wood core plywood
- Thickness of flooring material: 22 mm
- Width: 1 m
- Depth: 0.5 m
- Stacking height: 10 cm
- Max. load: 750 kg

Shape:



B3010210
STAGE PLATFORM OUTDOOR
1 X 0.5 M

- Frame material: aluminium
- Flooring material: screen print plate
- Thickness of flooring material: 22 mm
- Width: 1 m
- Depth: 0.5 m
- Stacking height: 10 cm
- Max. load: 750 kg

Shape:



B3010123
STAGE PLATFORM INDOOR
1 X 2 X 2.24 M

- Frame material: aluminium
- Flooring material: Beech wood core plywood
- Thickness of flooring material: 22 mm
- Width: 1 m
- Depth: 1 m
- Stacking height: 10 cm
- Max. load: 750 kg

Shape:



B3010223
STAGE PLATFORM OUTDOOR
1 X 1 M

- Frame material: aluminium
- Flooring material: screen print plate
- Thickness of flooring material: 22 mm
- Width: 1 m
- Depth: 1 m
- Stacking height: 10 cm
- Max. load: 750 kg

Shape:



B3010120
STAGE PLATFORM INDOOR
1 X 1 X 1.41 M

- Frame material: aluminium
- Flooring material: Beech wood core plywood
- Thickness of flooring material: 22 mm
- Dimensions: 1 x 1 x 1.41 m
- Stacking height: 10 cm
- Max. load: 750 kg

Shape:



B3010220
STAGE PLATFORM INDOOR
1 X 1 X 1.41 M

- Frame material: aluminium
- Flooring material: screen print plate
- Thickness of flooring material: 22 mm
- Dimensions: 1 x 1 x 1.41 m
- Stacking height: 10 cm
- Max. load: 750 kg

Shape:



STANDARD SERIES

The Standard platform with leg attachment corners for plug-in legs or height-adjustable telescopic legs. Suitable for leg profiles of 43-55 mm. No additional tools required - by simple hand-tightening of the knob the leg profiles are attached stably and securely. The Platforms can be connected either by high-quality plastic hooks, leg connectors or coupling brackets. All accessories such as connecting brackets, foot to foot clamps or steps can be combined with other Büttec Systems such as the ECO 1 and Standard. The legs for the stage platform are not included.



B3000101
STAGE PLATFORM INDOOR
2 X 1 M

- Frame material: aluminium
- Flooring material: Beech wood core plywood
- Thickness of flooring material: 22 mm
- Width: 2 m
- Depth: 1 m
- Stacking height: 10 cm
- Max. load: 750 kg

Shape:



B3000201
STAGE PLATFORM OUTDOOR
2 X 1 M

- Frame material: aluminium
- Flooring material: screen print plate
- Thickness of flooring material: 22 mm
- Width: 2 m
- Depth: 1 m
- Stacking height: 10 cm
- Max. load: 750 kg

Shape:



STANDARD SERIES



B3000102
STAGE PLATFORM INDOOR
2 X 0,5 M

- Frame material: aluminium
- Flooring material: Beech wood core plywood
- Thickness of flooring material: 22 mm
- Width: 2 m
- Depth: 0.5 m
- Stacking height: 10 cm
- Max. load: 750 kg

Shape:



B3000202
STAGE PLATFORM OUTDOOR
2 X 0,5 M

- Frame material: aluminium
- Flooring material: screen print plate
- Thickness of flooring material: 22 mm
- Width: 2 m
- Depth: 0.5 m
- Stacking height: 10 cm
- Max. load: 750 kg

Shape:



B3000104
STAGE PLATFORM INDOOR
1 X 1 M

- Frame material: aluminium
- Flooring material: Beech wood core plywood
- Thickness of flooring material: 22 mm
- Width: 1 m
- Depth: 1 m
- Stacking height: 10 cm
- Max. load: 750 kg

Shape:



B3000204
STAGE PLATFORM OUTDOOR
1 X 1 M

- Frame material: aluminium
- Flooring material: screen print plate
- Thickness of flooring material: 22 mm
- Width: 1 m
- Depth: 1 m
- Stacking height: 10 cm
- Max. load: 750 kg

Shape:



B3000110
STAGE PLATFORM INDOOR
1 X 0.5 M

- Frame material: aluminium
- Flooring material: Beech wood core plywood
- Thickness of flooring material: 22 mm
- Width: 1 m
- Depth: 0.5 m
- Stacking height: 10 cm
- Max. load: 750 kg

Shape:



B3000123
STAGE PLATFORM INDOOR
1 X 2 X 2.24 M

- Frame material: aluminium
- Flooring material: Beech wood core plywood
- Thickness of flooring material: 22 mm
- Width: 1 m
- Depth: 1 m
- Stacking height: 10 cm
- Max. load: 750 kg

Shape:



B3000120
STAGE PLATFORM INDOOR
1 X 1 X 1.41 M

- Frame material: aluminium
- Flooring material: Beech wood core plywood
- Thickness of flooring material: 22 mm
- Dimensions: 1 x 1 x 1.41 m
- Stacking height: 10 cm
- Max. load: 750 kg

Shape:



B3000210
STAGE PLATFORM OUTDOOR
1 X 0.5 M

- Frame material: aluminium
- Flooring material: screen print plate
- Thickness of flooring material: 22 mm
- Width: 1 m
- Depth: 0.5 m
- Stacking height: 10 cm
- Max. load: 750 kg

Shape:



B3000223
STAGE PLATFORM OUTDOOR
1 X 1 M

- Frame material: aluminium
- Flooring material: screen print plate
- Thickness of flooring material: 22 mm
- Width: 1 m
- Depth: 1 m
- Stacking height: 10 cm
- Max. load: 750 kg

Shape:



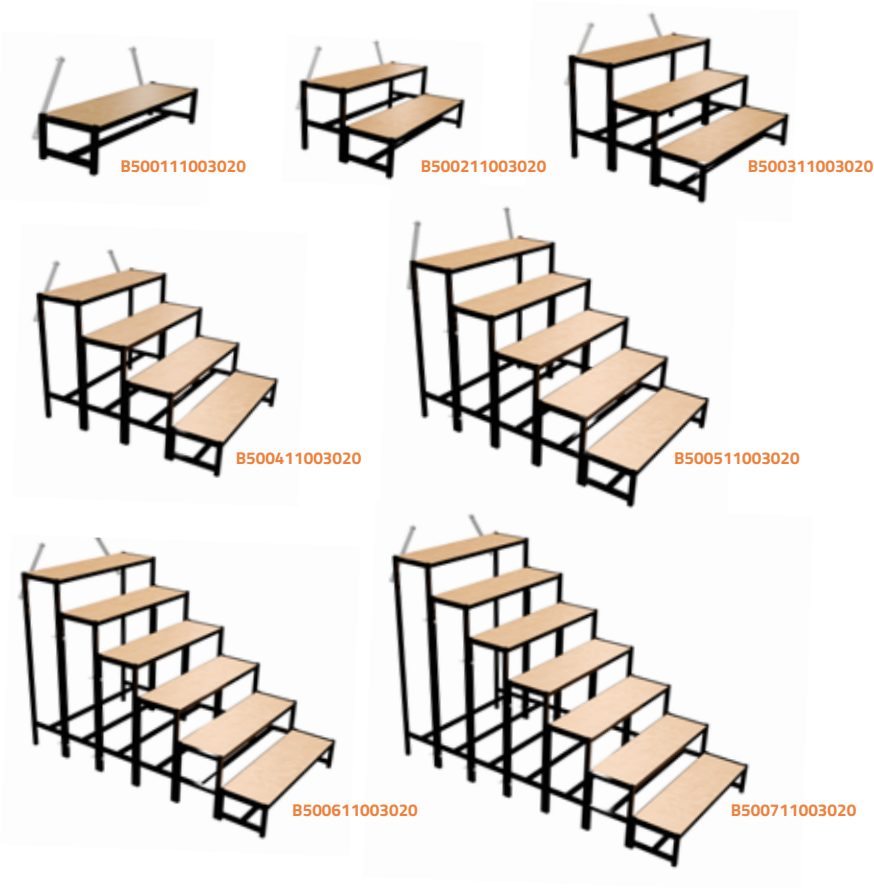
B3000220
STAGE PLATFORM INDOOR
1 X 1 X 1.41 M

- Frame material: aluminium
- Flooring material: screen print plate
- Thickness of flooring material: 22 mm
- Dimensions: 1 x 1 x 1.41 m
- Stacking height: 10 cm
- Max. load: 750 kg

Shape:



STAIRS



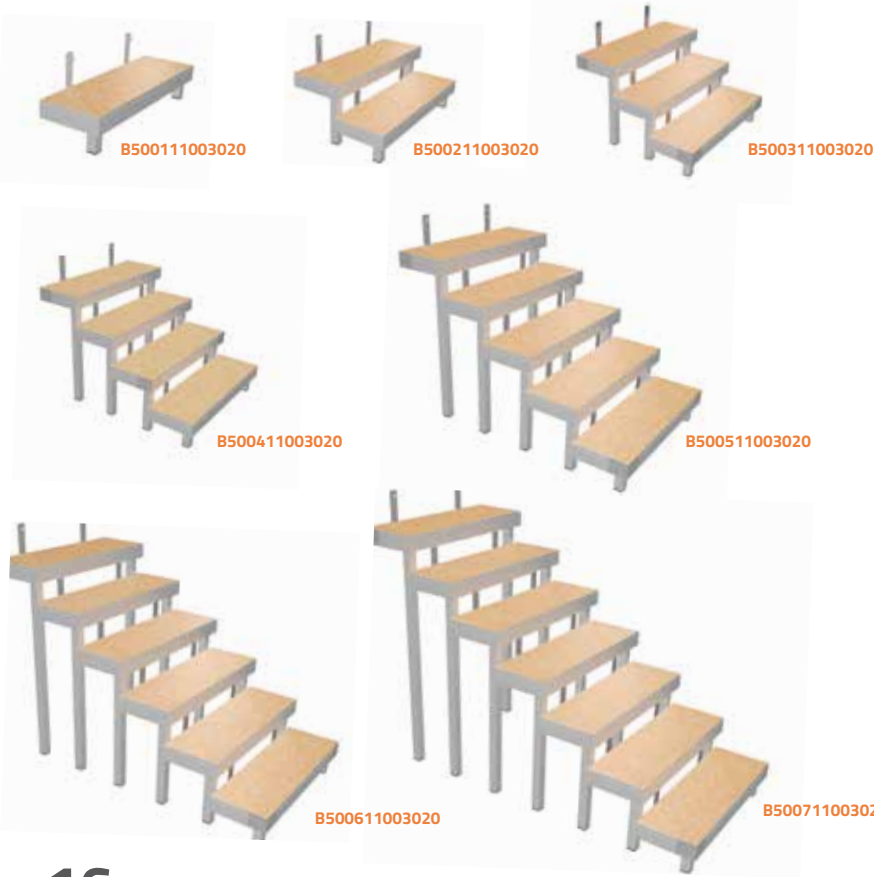
B4700### STAIR STEEL

Modularly expandable, sectional steel stage stairs with Beech wood core plywood surface or screen-printed panels according to customer preference. Expandable for a maximum stage height of 1.60 m. Very simple assembly of the steps thanks to plug connections; the handrails are mounted securely and firmly with screws.

The stair adapter set makes it possible to connect the stairs, so that they end flush with the stage.

- Material: steel
- Surface: powder coated
- Material thickness of step: 22 mm
- Step size: 1000 x 300 mm
- Step height: 200 mm
- For Stage Platform height up to: 40 m
- Width: 1 m
- Length: 0.3 m

Art. No.	Number of steps	Height up to
B500111003020	1	40 cm
B500211003020	2	60 cm
B500311003020	3	80 cm
B500411003020	4	100 cm
B500511003020	5	120 cm
B500611003020	6	140 cm
B500711003020	7	160 cm



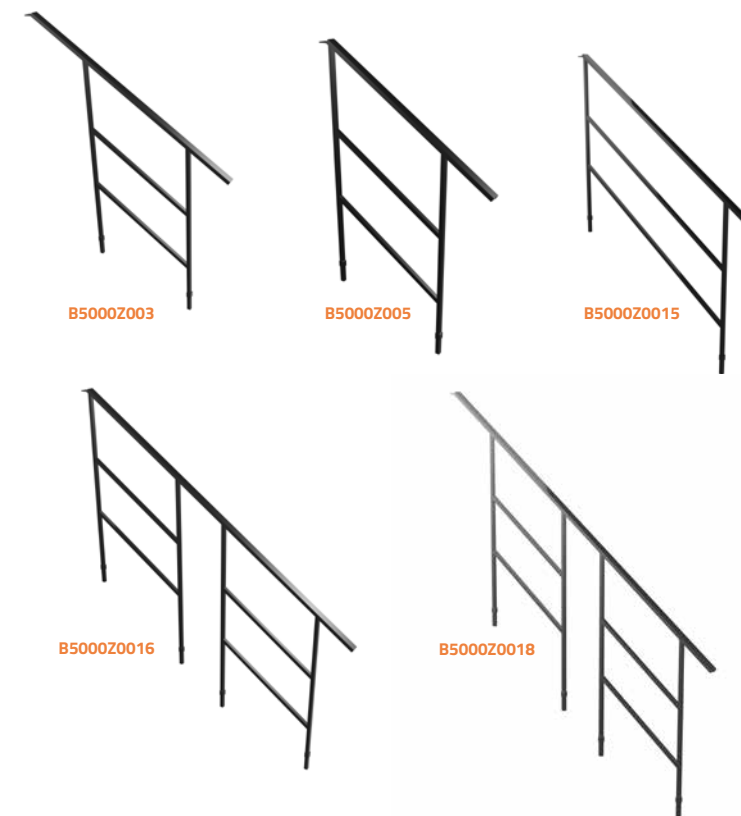
B4700### STAIR ALUMINIUM

The platform stairs are made of small platforms with steps made of 22 mm beech-wood-core plywood or screen-printed panels according to customer preference. The stairs can be extended easily at any time. Very simple assembly of the steps by means of hooks in the interior groove.

- Material: aluminium
- Material thickness of step: 22 mm
- Number of steps: 2
- Step size: 1000 x 300 mm
- Step height: 200 mm
- For Stage Platform height up to: 0.6 m
- Width: 1 m
- Length: 0.3 m

Art. No.	Number of steps	Height up to
B510111003020	1	40 cm
B510211003020	2	60 cm
B510311003020	3	80 cm
B510411003020	4	100 cm
B510511003020	5	120 cm
B510611003020	6	140 cm
B510711003020	7	160 cm

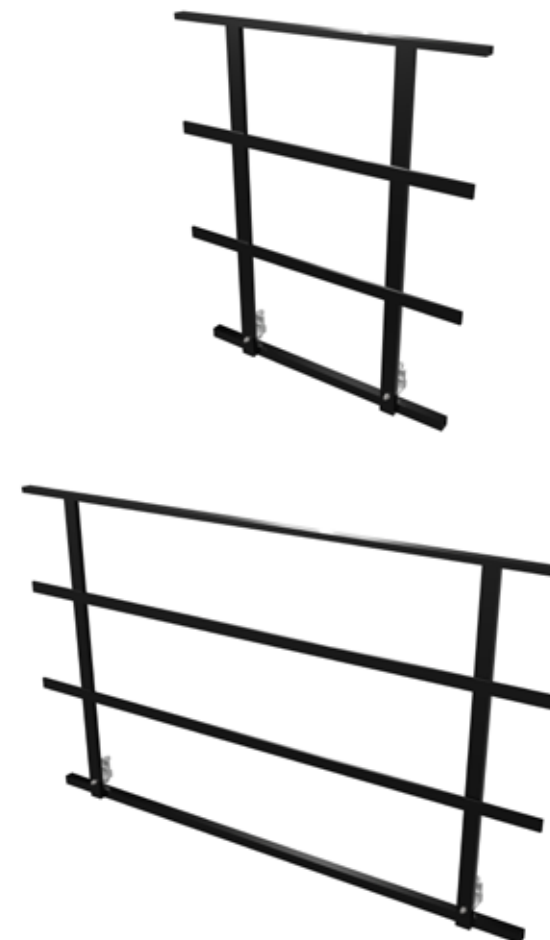
HANDRAILS & GUARDRAILS



B5000Z0## HANDRAIL FOR MODULAR STAIRS

- Material: steel
- Surface: powder coated
- Colour: black

Art. No.	Type	For square profile
B5000Z003	for 3-4 stairs	50 x 50 mm
B5000Z005	for 2 stairs	50 x 50 mm
B5000Z015	for 5 stairs	50 x 50 mm
B5000Z016	for 6 stairs	50 x 50 mm
B5000Z018	for 7 stairs	55 x 55 mm



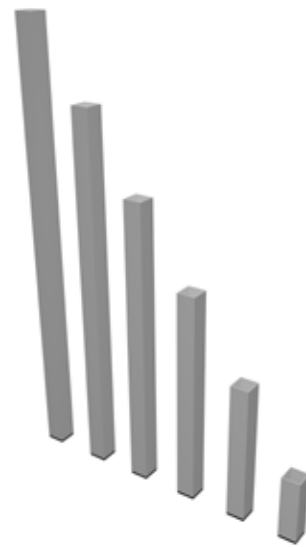
B5300100100 GUARDRAIL FOR STAGE PLATFORM 1 X 1 M

- Material: steel
- Surface: powder coated
- Colour: black
- Width: 1 m
- Length: 1 m
- Special feature: incl. mounting material

B5300100200 GUARDRAIL FOR STAGE PLATFORM 2 X 1 M

- Material: steel
- Surface: powder coated
- Colour: black
- Width: 2 m
- Length: 1 m
- Special feature: incl. mounting material

ACCESSORIES



B4050### SET OF 4 PLUG-IN LEGS

- Material: aluminium
- Leg cross section: 50 x 50 mm
- Leg length variable: no
- Leg length: 0.4 m
- Set consists of: 4 pcs

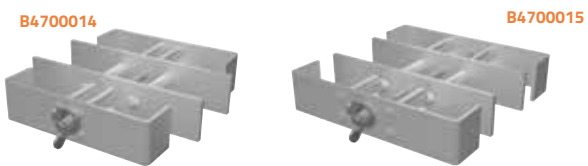
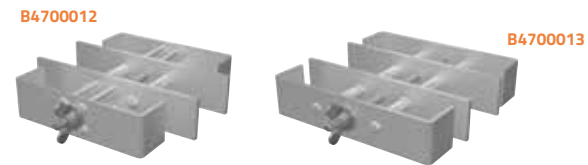
Art. No.	Height	Weight
B4050020	0.2 m	0.73 kg
B4050040	0.4 m	1.53 kg
B4050060	0.6 m	2.33 kg
B4050080	0.8 m	3.13 kg
B4050100	1.0 m	4.06 kg
B4050120	1.2 m	7.73 kg
B4050140	1.4 m	5.54 kg
B4050160	1.6 m	6.34 kg



B4550### SET OF 4 ADJUSTABLE TELESCOPIC LEGS 40 - 60 CM

- Material: aluminium
- Leg cross section: 55 x 55 mm
- Leg length variable: yes
- Set consists of: 4 pcs

Art. No.	Height	Weight
B4550040	0.4-0.6 m	5.34 kg
B4550060	0.6-1.0 m	7.46 kg
B4550100	1.0-1.6 m	11.72 kg



B4700### LEG CLAMPS

With rugged foot clamps by Bütec your stage platforms will stand absolutely stable even if they are very high. The foot connectors are available for all common systems between 50 x 50 mm and 60 x 60 mm and are fixed with a central screw.

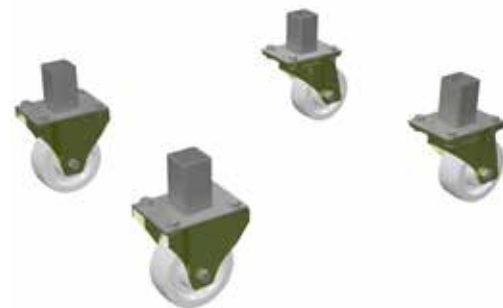
- Material: die-cast zinc

Art. No.	Type	For square profile
B4700006	B 2 legs for frame to legs connection	50 x 50 mm
B4700007	A 2 legs for frame to frame connection	50 x 50 mm
B4700012	B 2 legs for frame to legs connection	50 x 50 mm
B4700013	A 2 legs for frame to frame connection	50 x 50 mm
B4700009	C 2 legs for frame to frame connection	55 x 55 mm
B4700014	D 4 legs for frame to legs connection	55 x 55 mm
B4700015	C 4 legs for frame to frame connection	55 x 55 mm

B4700041 TRANSPORT CASTOR SET FOR STAGE PLATFORMS WITH PLUG-IN FEET

Transport castor set for stage platforms with plug-in feet consisting of 2 swivel castors and 2 fixed castors made of soft plastic for normal floors.

- Wheel diameter: 150 mm
- Height: 192 mm
- Cabinet material: sheet steel
- Wheel material: polyurethane
- Wheel colour: blue
- Bearing type: ball bearing
- Rated load per set: 1000 kg
- Set consists of: 4 pcs



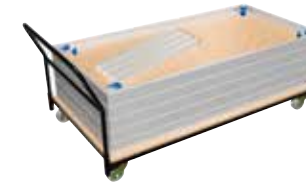
B4700-001 PLASTIC CONNECTING CLAMP FOR STAGE PLATFORMS

Your platforms can be connected with one another using the time tested plastic or die cast zinc connecting clamps.



B4700-002 DIE-CAST ZINC CONNECTING CLAMP FOR STAGE PLATFORMS

Your platforms can be connected with one another using the time tested plastic or die cast zinc connecting clamps.



B5400 DOLLY FOR STAGE PLATFORMS FOR NORMAL FLOORS 2 X 1 M

- Push bar: yes
- Number of swivel castor: 2
- Number of castor: 2
- For stage platform dimensions: 2 x 1 m

For up to 18 podiums with plug-in feet or 8 podiums with scissor legs.



B5410 DOLLY FOR STAGE PLATFORMS FOR SENSITIVE FLOORS 2 X 1 M

- Push bar: yes
- Number of swivel castor: 2
- Number of castor: 2
- For stage platform dimensions: 2 x 1 m

For up to 18 podiums with plug-in feet or 8 podiums with scissor legs.



0153X### BLACKOUT CLOTH B1 WITH VELCRO

Non-see-thru, black blackout cloth impregnated with fire retardant (B1 according to DIN 4102) and 300-g quality. The fabrics have a self-adhesive hook-and-loop strip, making it easy to attach them to platforms or the like and detach them again at any time.

- Sewn-on fleece strip with attached hook strip
- Left and right selvedge
- 5 cm hemstitch with open sides at the bottom

Art. No.	Size
0153X204	2.0 x 0.4 m black
0153X206	2.0 x 0.6 m black
0153X208	2.0 x 0.8 m black
0153X210	2.0 x 1.0 m black
0153X211	2.0 x 1.1 m black



PATENTED

MADE IN GERMANY



DEFENDER® CABLE PROTECTION SYSTEMS – THE INDUSTRY & EVENT STANDARD

Originally developed to guard electrical cables and prevent tripping hazards at rock concerts Defender® cable protectors have become the standard in a wide variety of industrial, commercial and public applications.

Designed and made in Germany from ultra-rugged, recyclable TPU (Thermoplastic Polyurethane) the Defender® range comprises various modular protection systems for cables and hoses with diameters up to 113 mm. Stringent raw material and production controls ensure that Defender® protectors meet exacting specifications and the highest quality standards. Defender® cable ramps are DEKRA certified in conformity with DIN 31000 and EN 61537, B2 fire rated according to DIN 4102 (B1 also available) and compliant with the Low Voltage Directive.

DEFENDER®

CABLE PROTECTION SYSTEMS 22-35



DEFENDER® LUX

SEMI-TRANSPARENT LID SERIES

The ultimate in cable protection and trip hazard prevention, our innovative Defender LUX Series feature highly translucent yellow-tinted lids for running LED rope lights along your cables and cords. Developed in conjunction with major venues and event organizers Defender LUX Cable Protectors are the state-of-the-art indoor and outdoor solution to ensure maximum visibility and security in the dark. For use with standard LED rope lights.

Description:	Art. No.:
Defender Ultra L Lux	85600LUX
Defender Ultra L II Lux	85601LUX
Defender XXL Lux	85500LUX
Defender III Lux	85002LUX
Defender Midi Lux	85300LUX
Defender Midi 4C Lux	85301LUX
Defender Mini Lux	85200LUX
Defender Nano Lux	85150LUX



DEFENDER® CUSTOM SERVICE

DESIGN YOUR CABLE PROTECTION SYSTEM!

SPECIAL CONFIGURATIONS



ROBOTIC PLASTIC WELDING

For superior flexibility in designing your cable protection system and perfect integration into your environment Defender provides its own in-house robotic plastic welding service. Need an intersection or T-junction, a special angle or radius curve?



We produce one-offs and small quantities of Defender elements made to your requirements. What's more, at Defender engineering and tooling we develop and produce special purpose injection-molded protection solutions like those below. Talk to your Defender representative for more information and minimum orders.



LABEL YOUR CABLE PROTECTORS

Self branding of your cable protectors has 3 main advantages : Advertisement for your brand / Corporate Identity conformity / Avoid mixing up your equipment with another company on large events. Self branding of the DEFENDER cable protectors with the Logo of your company can be purchased for orders ex 30 pieces. You will find the logo format requirements on our website. Feel free to contact our sales team for more information at sales@adamhall.com

CUSTOM SOLUTION DEVELOPMENT



DEFENDER SUBTERRA

Developed with and produced for Halliburton Oilfield Services, the Subterra is a protection system for underground hydraulic lines. It combines thermoplastic polyurethane and reinforced polyamide materials to withstand earth pressure and truly demonstrates the scope of Defender's purpose design and custom production facilities.

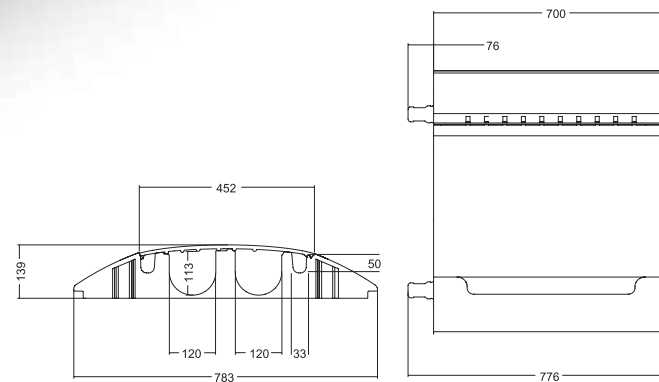
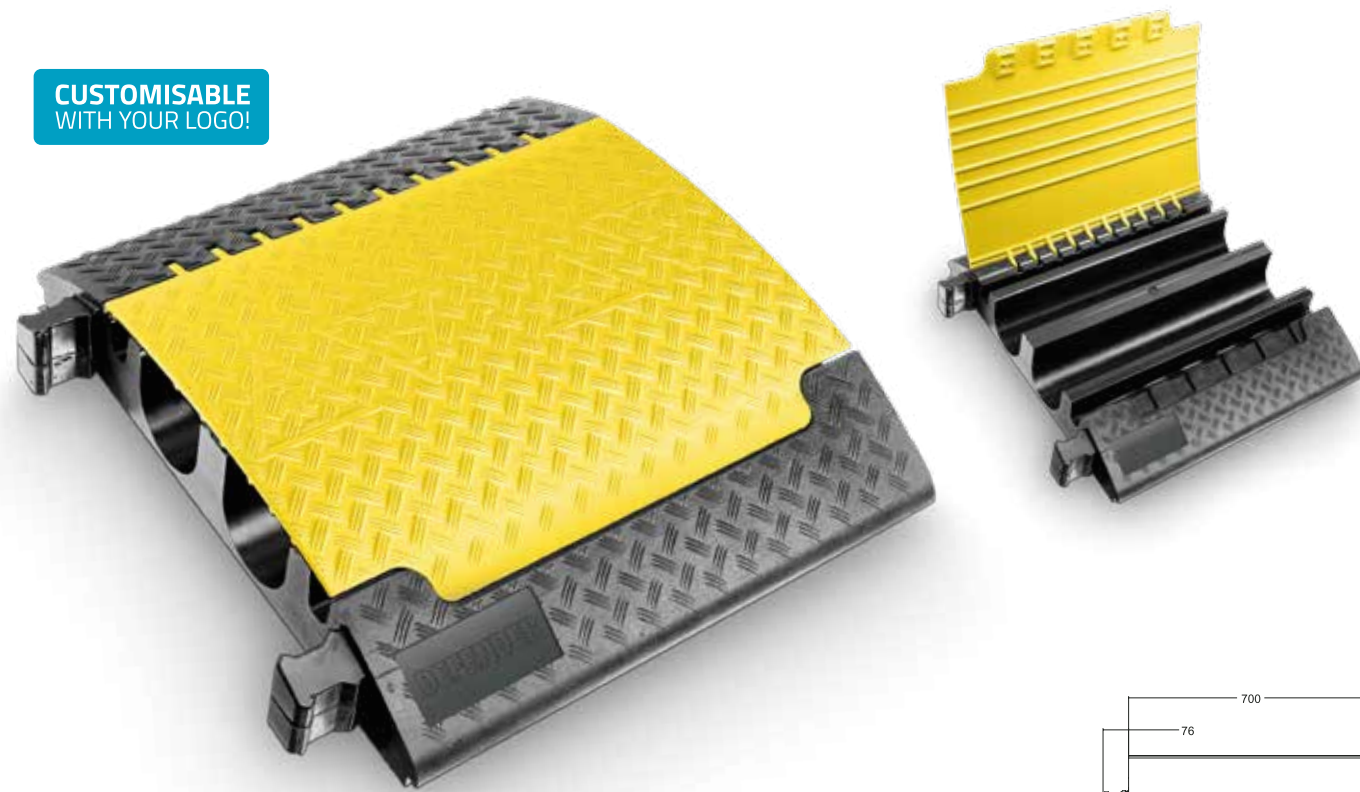


DEFENDER RACE RESULT

Developed with leading race management and timing company race result, these injection molded thermoplastic polyurethane protectors are another Defender Custom product that has been purpose-designed for the company's sports event timing system antennas.

CABLE PROTECTION SYSTEMS

CUSTOMISABLE
WITH YOUR LOGO!



85600

DEFENDER ULTRA L 2 ULTRA LARGE CHANNELS – THE HEAVY DUTY GIANT

The Ultra L cable protection system is designed for extra heavy duty environments and the largest cable and hose diameters. Featuring a pair of 120 x 113 mm channels flanked by two 33 x 50 mm ducts, integrated dog bone connectors for easy linking and a 5 t per 20 x 20 cm load capacity Defender® Ultra L protectors are eminently suitable for heavy wheeled traffic, construction sites, warehouses, carnivals, fairs, music events and other demanding applications.

APPLICATION RANGE

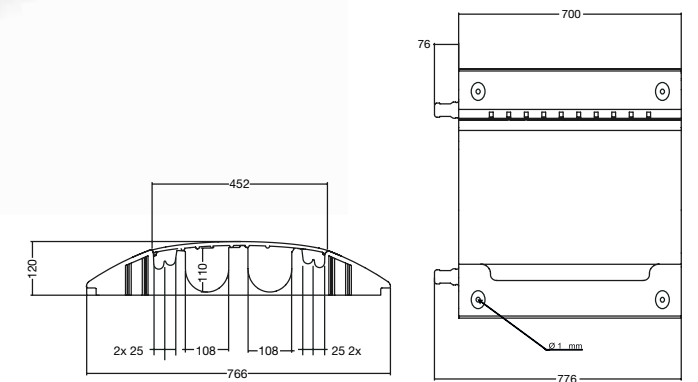
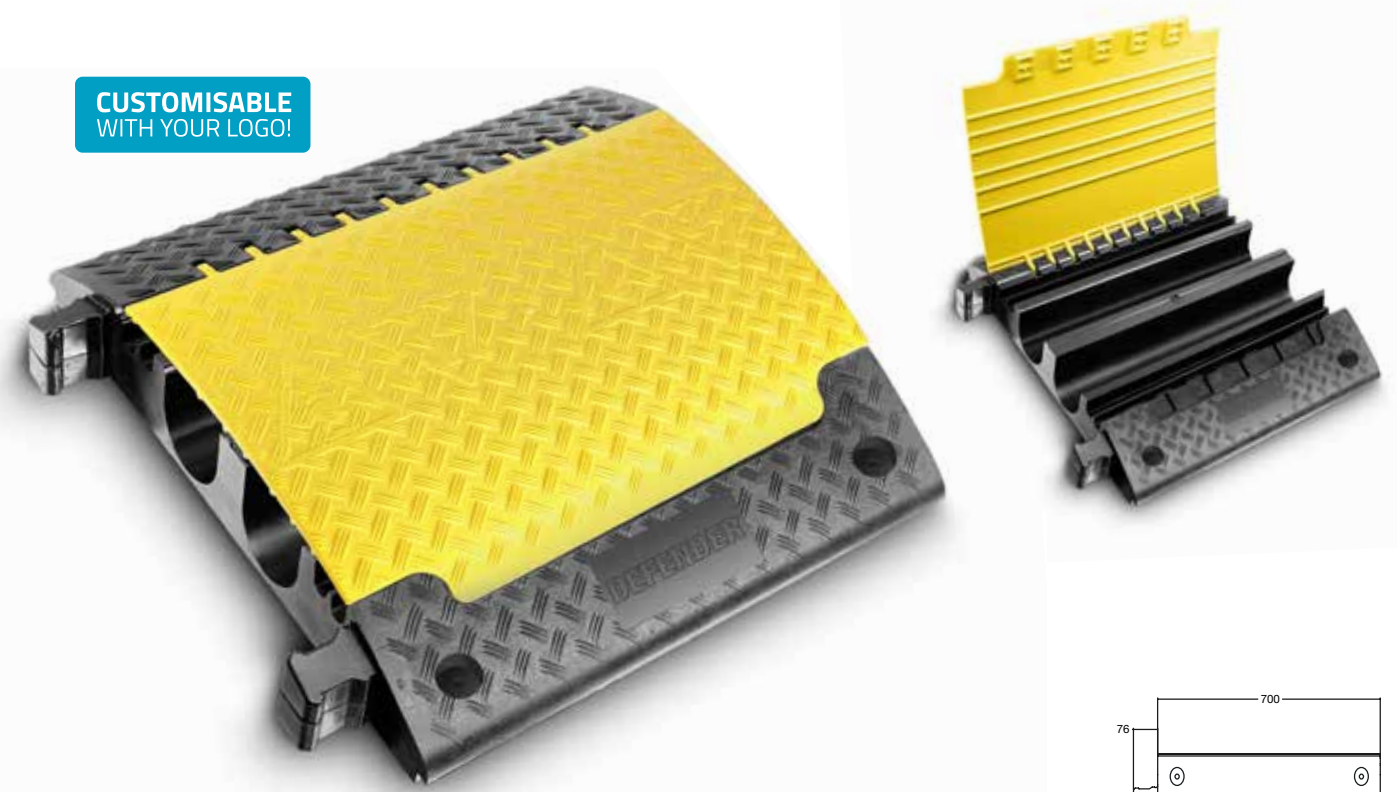
Trade fairs / walkways / marketplaces / Christmas markets / workshops / warehouses / shopping centres / department stores / construction sites, streets, etc. However, please ensure compliance with road traffic regulations (higher than 75 mm).

SPECIFICATIONS

Product:	4-channel cable protector
Channel W x H:	33 x 50 mm (channels 1 and 4), 120 x 113 mm (channels 2 and 3)
Material:	TPU (Thermoplastic Polyurethane)
Shore A hardness:	88 ± 4
Load capacity:	approx. 5 t / 20 x 20 cm (typical tyre footprint area)
Fire rating:	B2 (B1 also available)
Resistant to:	most acids, oils, gasoline
Operating temperature:	-30° to +60° C
Length:	700 mm
Width:	783 mm
Height:	139 mm
Weight:	30.5 kg

CABLE PROTECTION SYSTEMS

CUSTOMISABLE
WITH YOUR LOGO!



85601

DEFENDER ULTRA L 2 2 ULTRA LARGE CHANNELS (2+4) – THE HEAVY DUTY GIANT

Ultra L 2 - heavy duty cable crossovers are designed for the most demanding applications and feature two extra large cable channels of 108 x 110 mm plus four channels with 25 mm diameter and integrated connector plugs for easy coupling of several elements. The load bearing capacity is approx. 5 tons on a 20 x 20 cm surface area. Therefore, Ultra L 2 cable crossovers are the ideal solution for heavy traffic, construction sites, warehouses, trade shows, carnivals and music events, and other applications involving particularly heavy use. They are equipped with 4 fixation holes (ø 15 mm) for street installation.

APPLICATION RANGE

Trade fairs / walkways / marketplaces / Christmas markets / workshops / warehouses / shopping centres / department stores / construction sites, streets, etc. However, please ensure compliance with road traffic regulations (higher than 75 mm).

SPECIFICATIONS

Product:	2+4-channel cable protector
Channel W x H:	Diameter channel 1+2: 25 mm / Diameter channel 5+6: 25 mm Channel 3: 108 x 110 mm / Channel 4: 108 x 110 mm
Material:	TPU (Thermoplastic Polyurethane)
Shore A hardness:	88 ± 4
Load capacity:	approx. 5 t / 20 x 20 cm (typical tyre footprint area)
Fire rating:	B2 (B1 also available)
Resistant to:	most acids, oils, gasoline
Operating temperature:	-30° to +60° C
Length:	700 mm
Width:	766 mm
Height:	120 mm
Weight:	28.3 kg

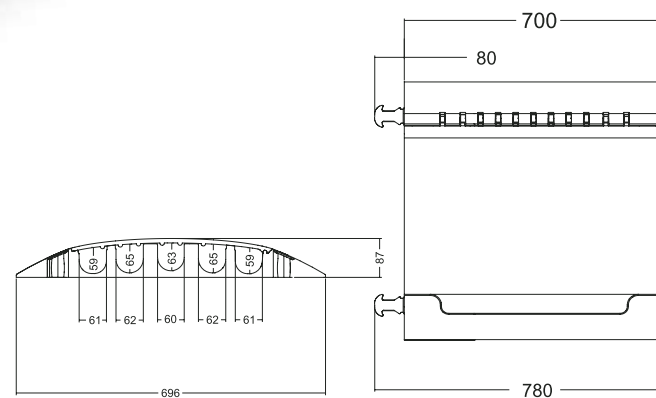
CABLE PROTECTION SYSTEMS

CABLE PROTECTION SYSTEMS

CUSTOMISABLE
WITH YOUR LOGO!



End ramp Art. No. 85510



85500

DEFENDER XXL 5 XXL CHANNELS – THE HEAVY DUTY ALLROUNDER

Developed for extreme work environments the Defender® XXL cable protection system provides 5 channels for large cable and hose diameters including 3 channels suitable for type C fire hoses (only hoses up to Ø62 mm - no coupling) as well as high voltage cables. Integrated dog bone connectors facilitate linking to form a rigid continuous protector, end ramps are available for secure cable entry and exit. With a 5 t per 20 x 20 cm load capacity Defender® XXL protectors are ideal for heavy wheeled traffic, construction sites, warehouses, carnivals, fairs and music events. Built-in handles for easy portability.

APPLICATION RANGE

Trade fairs / walkways / marketplaces / Christmas markets / workshops / warehouses / shopping centres / department stores / construction sites, streets, etc. However, please ensure compliance with road traffic regulations (higher than 75 mm).

SPECIFICATIONS

Product:	5-channel cable protector
Channel W x H:	61 x 59 mm (channels 1 and 5), 62 x 65 mm (channels 2 and 4), 60 x 63 mm (channel 3)
Material:	TPU (Thermoplastic Polyurethane)
Shore A hardness:	88 ± 4
Load capacity:	approx. 5 t / 20 x 20 cm (typical tyre footprint area)
Fire rating:	B2 (B1 also available)
Resistant to:	most acids, oils, gasoline
Operating temperature:	-30° to +60° C
Length:	700 mm
Width:	696 mm
Height:	87 mm
Weight:	21.4 kg

CUSTOMISABLE
WITH YOUR LOGO!



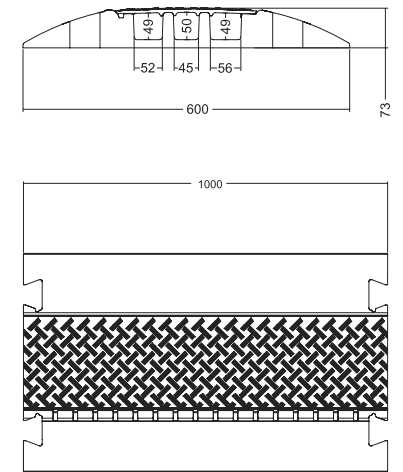
45° curve Art. No. 85009



Connector plugs
Art. No. 85004



End ramp Art. No. 85008



85002

DEFENDER III 3 BIG CHANNELS – MOST POPULAR

Featuring a 73 mm profile, 45° curve and end ramps with detachable dovetail connectors the Defender® III cable protection system provides versatile cable routing and safe crossing for vehicles and pedestrians. With 3 medium large channels, built-in handles for easy portability and a 5 t per 20 x 20 cm load capacity the 73 mm profile Defender® III cable protectors are the perfect all-round choice for a wide variety of applications including heavy wheeled traffic, construction sites, warehouses, carnivals, fairs, trade shows, exhibitions, shopping malls and music events.

APPLICATION RANGE

Trade fairs / walkways / marketplaces / Christmas markets / workshops / warehouses / shopping centres / department stores / construction sites, streets, etc..

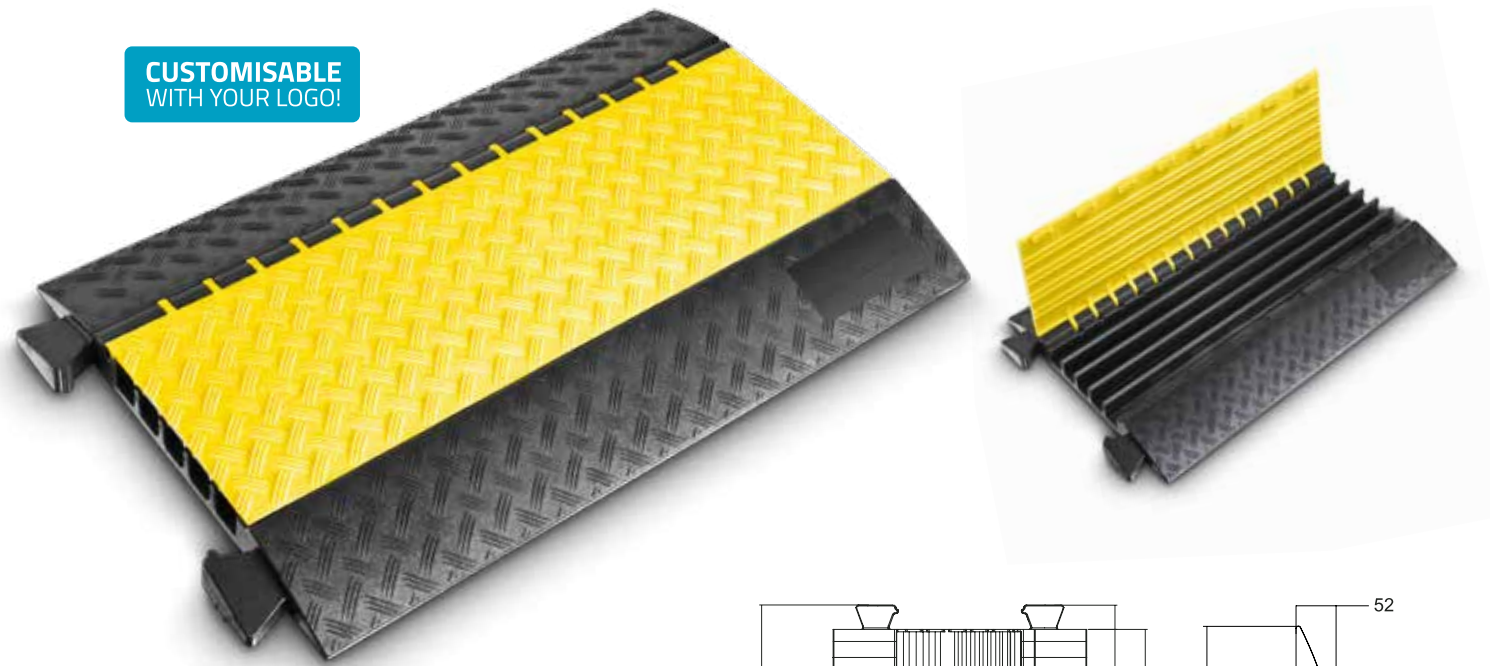
SPECIFICATIONS

Product:	3-channel cable protector
Channel W x H:	52 x 49 mm (channel s 1 and 3), 45 x 50 mm (channel 2)
Material:	TPU (Thermoplastic Polyurethane)
Shore A hardness:	88 ± 4
Load capacity:	5 t / 20 x 20 cm (typical tyre footprint area)
Fire rating:	B2 (B1 also available)
Resistant to:	most acids, oils, gasoline
Operating temperature:	-30° to +60° C
Length:	1.000 mm
Width:	600 mm
Height:	73 mm
Weight:	22 kg

CABLE PROTECTION SYSTEMS

CABLE PROTECTION SYSTEMS

CUSTOMISABLE
WITH YOUR LOGO!

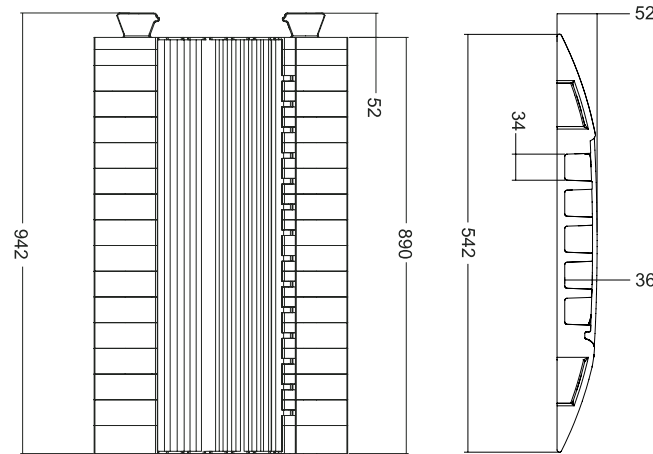


CUSTOMISABLE
WITH YOUR LOGO!

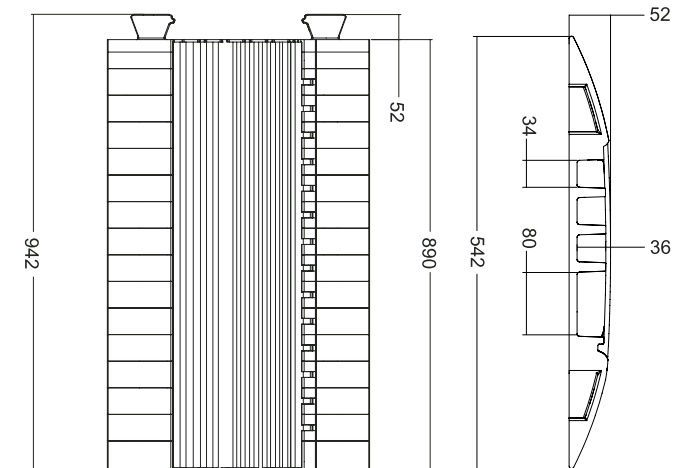


45° curve Art. No. 85310

End ramp Art. No. 85308



End ramp Art. No. 85308



85300 DEFENDER MIDI 5 MEDIUM CHANNELS – THE SOLUTION FOR NEARLY ANYTHING

The Defender® MIDI cable protection system has been designed for maximum routing versatility and secure crossing. Featuring a low profile, 5 t per 20 x 20 cm load capacity, integrated connectors and handles the straight ramp, 45° curve and end ramps are easily linked to form a continuous cable guard while five 34 x 36 mm channels allow for individual sound, lighting and power line arrangement. Defender® MIDI cable protectors are ideal for a multitude of usages such as heavy wheeled traffic, construction sites, warehouses, carnivals, fairs, trade shows, exhibitions, shopping malls, broadcasting and music events. Available system option: wheelchair ramp.

APPLICATION RANGE

Trade fairs / walkways / marketplaces / Christmas markets / workshops / warehouses / shopping centres / department stores / construction sites, streets, etc.

SPECIFICATIONS

Product:	5-channel cable protector
Channel W x H:	34 x 36 mm (channels 1 to 5)
Material:	TPU (Thermoplastic Polyurethane)
Shore A hardness:	88 ± 4
Load capacity:	approx. 5 t / 20 x 20 cm (typical tyre footprint area)
Fire rating:	B2 (B1 also available)
Resistant to:	most acids, oils, gasoline
Operating temperature:	-30° to +60° C
Length:	890 mm
Width:	542 mm
Height:	52 mm
Weight:	11.5 kg

85301 DEFENDER MIDI 4C 4 MEDIUM CHANNELS – 1 BIG CHANNEL FOR FIRE HOSE

With one wide 80 x 36 mm channel and three 34 x 36 mm ducts the Defender® MIDI 4C cable protection system is the perfect choice when a layflat hose must be run next to separate sound, lighting and power lines. Featuring integrated connectors, the low profile and 5 t per 20 x 20 cm load capacity of the Defender® MIDI system MIDI 4C protectors are suitable for heavy wheeled traffic, construction sites, warehouses, carnivals, fairs, trade shows, exhibitions, shopping malls and music events.

APPLICATION RANGE

Trade fairs / walkways / marketplaces / Christmas markets / workshops / warehouses / shopping centres / department stores / construction sites, streets, etc.

SPECIFICATIONS

Product:	4-channel cable protector
Channel W x H:	34 x 36 mm (channels 1 to 3), 80 x 36 mm (channel 4)
Material:	TPU (Thermoplastic Polyurethane)
Shore A hardness:	88 ± 4
Load capacity:	Approx 5 tons per typical tyre imprint (10 x 10 cm)
Fire rating:	B2 (B1 also available)
Resistant to:	most acids, oils, gasoline
Length:	890 mm
Width:	542 mm
Height:	52 mm
Weight:	11.5 kg

CABLE PROTECTION SYSTEMS

CUSTOMISABLE
WITH YOUR LOGO!



End ramp Art. No. **85208F**



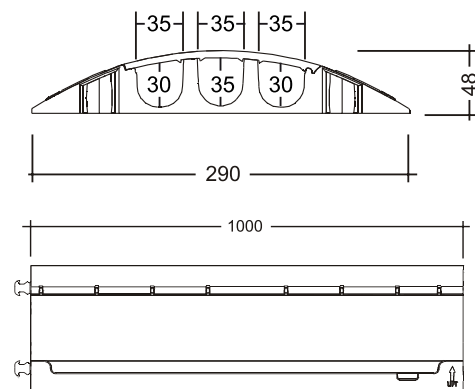
End ramp Art. No. **85208M**



45° curv left Art. No. **85210L**



45° curv right Art. No. **85210R**



85200 DEFENDER MINI 3 SMALL CHANNELS – THE LIGHTWEIGHT CHAMPION

Available with a choice of black or yellow lids the Defender® MINI cable protection system is ideal for both indoor and outdoor use. The compact, low profile 3-channel ramp with integrated dog bone connectors features a slip-resistant underside for superior grip on a wide variety of surfaces. Male and female end ramps are available to provide secure and tidy cable entry and exit. With a 2 t per 20 x 20 cm load capacity Defender® MINI protectors support lightweight vehicles, carts and pedestrian traffic. Applications include carnivals, fairs, trade shows, exhibitions, shopping malls, warehouses, stages, studios and broadcasting. Not suitable for road traffic.

APPLICATION RANGE

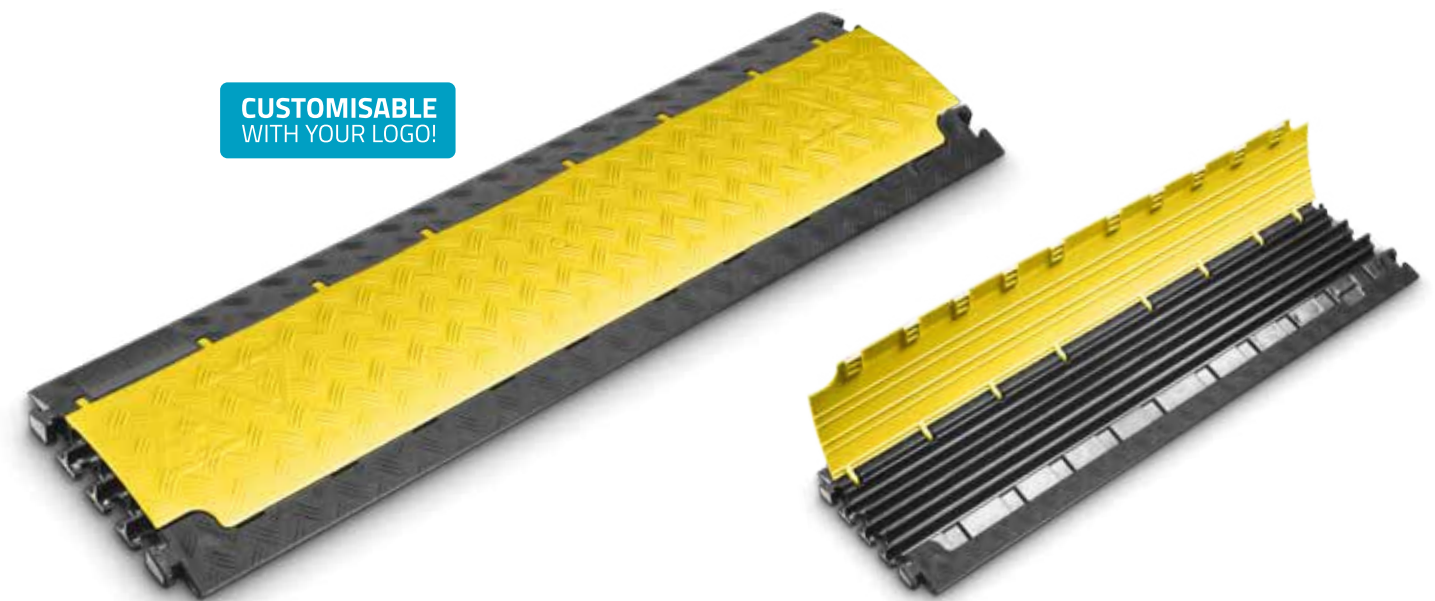
Trade fairs / walkways / marketplaces / Christmas markets / workshops / warehouses / shopping centres / department stores / construction sites, streets, etc.

SPECIFICATIONS

Product:	3-channel cable protector
Channel W x H:	35 x 30 mm (channels 1 and 3), 35 x 35 mm (channel 2)
Material:	TPU (Thermoplastic Polyurethane)
Shore A hardness:	88 ± 4
Load capacity:	approx. 2 t / 20 x 20 cm (typical tyre footprint area)
Fire rating:	B2 (B1 also available)
Resistant to:	most acids, oils, gasoline
Operating temperature:	-30° to +60° C
Length:	1.000 mm
Width:	290 mm
Height:	48 mm
Weight:	5 kg

CABLE PROTECTION SYSTEMS

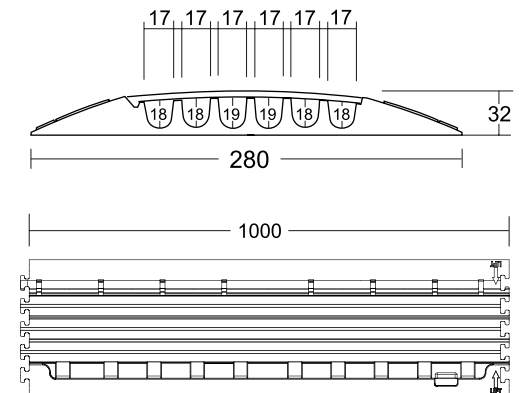
CUSTOMISABLE
WITH YOUR LOGO!



End ramp Art. No. **85158F**



End ramp Art. No. **85158M**



85150 DEFENDER NANO 6 SLIM CHANNELS - DISCRETE OUTDOOR / INDOOR PROTECTION

Providing convenient wheelchair access the Defender® NANO cable protection system is the ultra low profile solution for a wide range of indoor and outdoor applications. Available with black or yellow lid Defender® NANO protectors feature 6 channels for clean and tidy cable arrangement, T-shaped connectors and a 2 t per 20 x 20 cm load capacity to support lightweight vehicles, carts and pedestrian traffic but also forklifts and pallet trucks thanks to their low height design. Male and female end ramps are available to provide secure cable entry and exit.

The Defender® NANO protection system is ideal for carnivals, fairs, trade shows, exhibitions, shopping malls, warehouses, stages, studios and broadcasting. Not suitable for road traffic.

APPLICATION RANGE

Trade fairs / walkways / marketplaces / Christmas markets / workshops / warehouses / shopping centres / department stores / construction sites, streets, etc.

SPECIFICATIONS

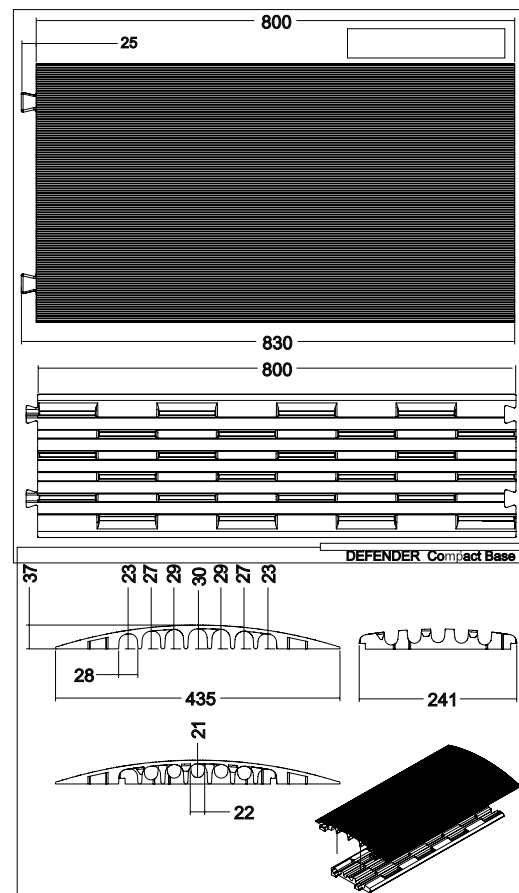
Product:	6-channel cable protector
Channel W x H:	17 x 18 mm (channels 1 to 6)
Material:	TPU (Thermoplastic Polyurethane)
Shore A hardness:	88 ± 4
Load capacity:	approx. 2 t / 20 x 20 cm (typical tyre footprint area)
Fire rating:	B2 (B1 also available)
Resistant to:	most acids, oils, gasoline
Operating temperature:	-30° to +60° C
Length:	1.000 mm
Width:	280 mm
Height:	32 mm
Weight:	4.37 kg

CABLE PROTECTION SYSTEMS



Bottom view

Base Art. No. 85103



85100 DEFENDER COMPACT 7 SMALL CHANNELS - THE DROP OVER SOLUTION

The Defender® COMPACT drop-over cable protector is a durable light-duty solution to guard cable lines and prevent tripping hazards. Featuring a ribbed surface for excellent traction and integrated dovetail connectors Defender® COMPACT drop-over cable ramps are suitable for pedestrian traffic in offices, shopping malls, conference facilities, trade shows and markets as well as stage and studio applications.

DEFENDER® COMPACT WITH BASE (85100 + 85103)

Attached to the optional 5-channel base the Defender® COMPACT drop-over cable protector transforms into a heavy-duty guard with high load capacity to support trucks, forklifts and other vehicles. The ribbed surface provides excellent traction while integrated connectors on the base and drop-over facilitate lining up to form a rigid continuous protection system. The range of applications includes construction sites, carnivals, fairs, trade shows, exhibitions, warehouses, shopping malls and music events.

APPLICATION RANGE

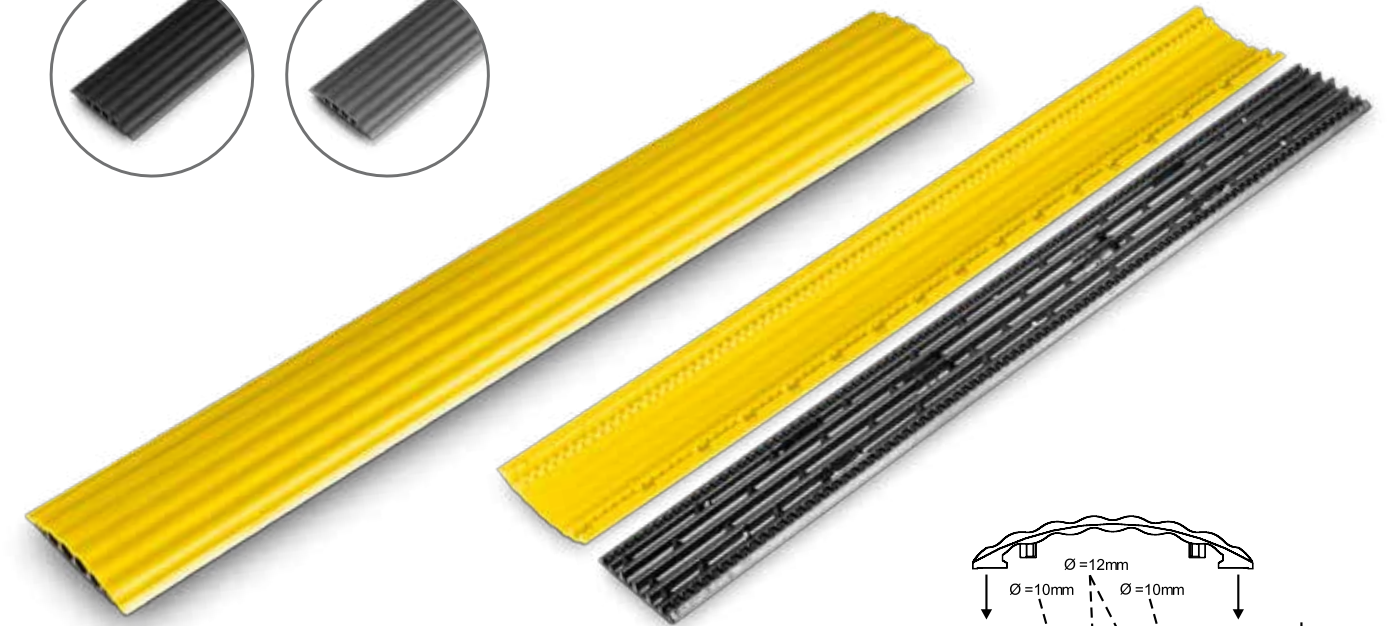
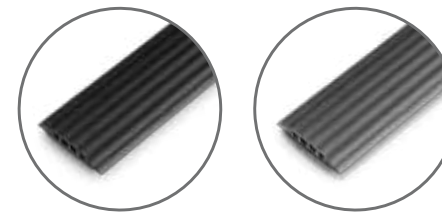
Mainly in halls, at trade fairs, etc.

SPECIFICATIONS

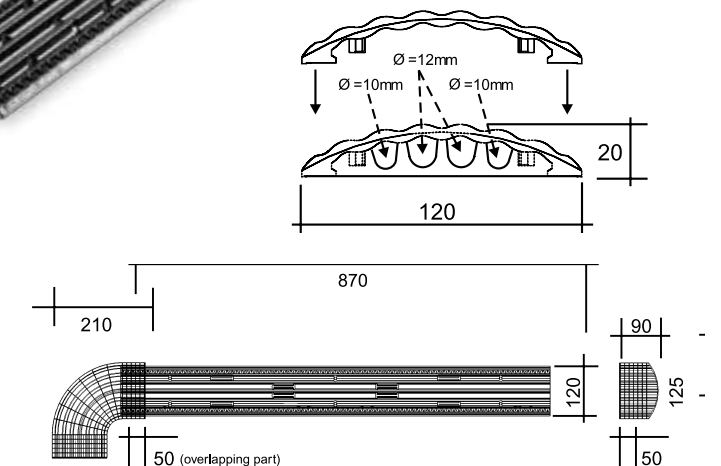
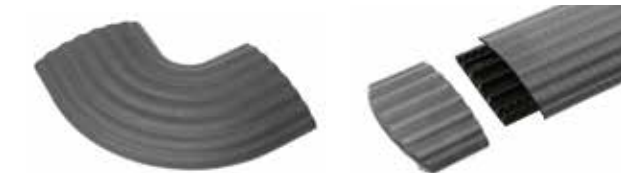
Art. No.:	85100	85103 (base), 85100 (drop-over)
Product:	7-channel cable protector	5-channel cable protector
Channel W x H:	28 x 23 mm (channels 1 and 7), 28 x 27 mm (channels 2 and 6), 28 x 29 mm (channels 3 and 5), 28 x 30 mm (channel 4)	22 x 21 mm (channels 1 to 5)
Material:	TPU (Thermoplastic Polyurethane)	TPU (Thermoplastic Polyurethane)
Shore A hardness:	88 ± 4	88 ± 4
Load capacity:	approx. 2 t / 20 x 20 cm (typical tyre footprint area)	approx. 2 t / 20 x 20 cm (typical tyre footprint area)
Fire rating:	B2 (B1 also available)	B2 (B1 also available)
Resistant to:	most acids, oils, gasoline	most acids, oils, gasoline
Operating temperature:	-30° to +60° C	-30° to +60° C
Length:	800 mm	800 mm
Width:	430 mm	430 mm
Height:	40 mm	40 mm
Weight:	3.5 kg	7 kg (base with drop-over)

CABLE PROTECTION SYSTEMS

Available in black, yellow and grey!



45° Curve Art. No. 85161GREY End ramp Art. No. 85168GREY



85160 / 85160GREY / 85160YEL DEFENDER OFFICE 4 MINI CHANNELS - INDOOR & DESIGN SOLUTION

Available with a choice of black, grey and yellow colors the Defender® OFFICE cable protection system is the elegant solution for secure pedestrian traffic in conference facilities, exhibitions, public buildings, retail outlets, shopping malls, trade shows and offices. Featuring straight, 90° and end ramps with cutting guides for length adjustment, zigzag connection and bolt holes for ground fixing the Defender® OFFICE system provides versatile cable routing while preventing tripping hazards.

APPLICATION RANGE

Mainly in offices, halls, at trade fairs, etc.

DEFENDER® OFFICE 90° CURVE

Art. No.: 85161 (black), 85161GREY, 85161YEL

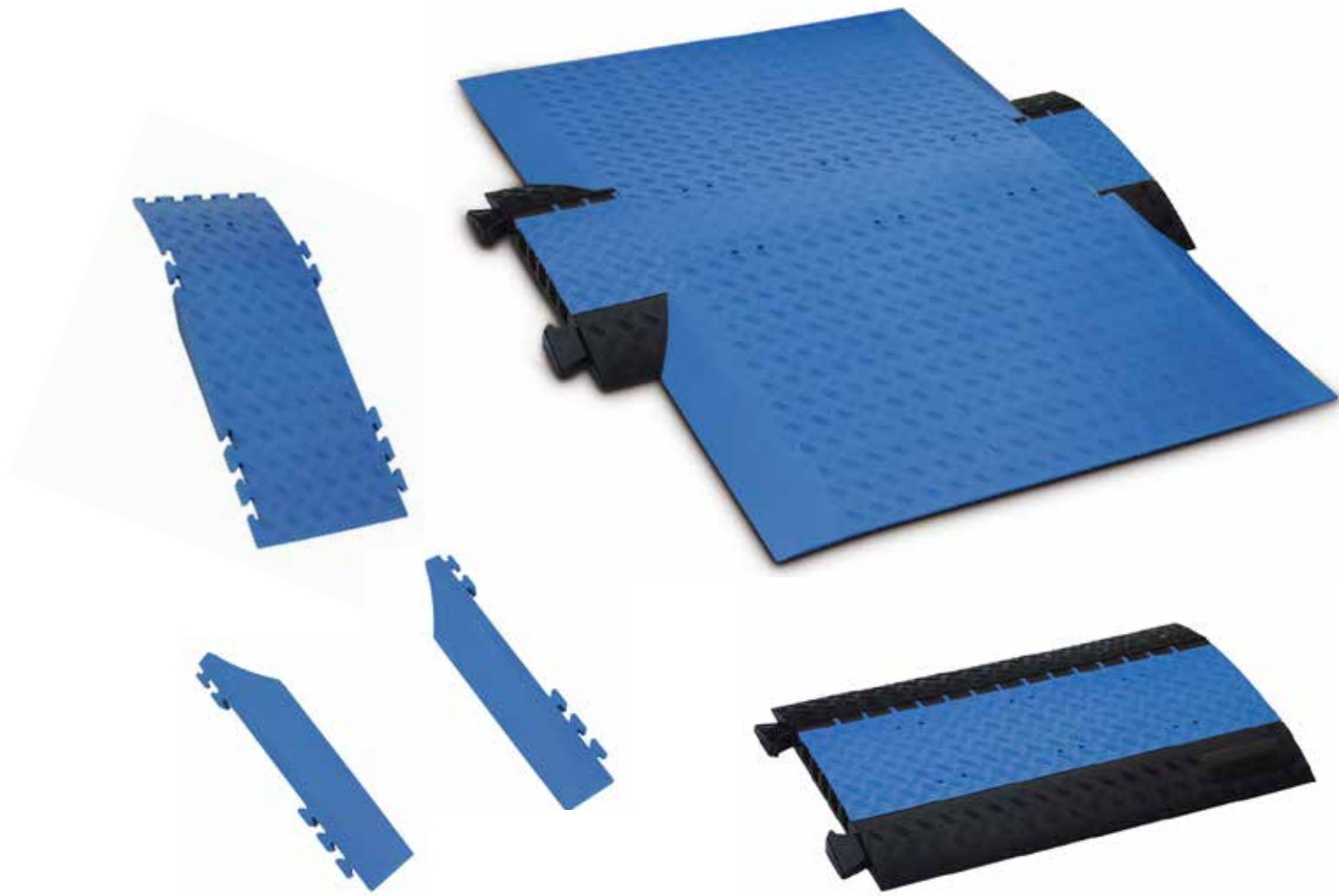
DEFENDER® OFFICE END RAMP

Art. No.: 85168 (black), 85168GREY, 85168YEL

SPECIFICATIONS

Art. No.:	85160 (Black) / 85160GREY (Grey) / 85160YEL (Yellow)
Product:	4-channel cable protector
Channel W x H:	10 x 10 mm (channels 1 and 4), 12 x 12 mm (channels 2 and 3)
Material:	TPU (Thermoplastic Polyurethane)
Shore A hardness:	92 ± 4
Load capacity:	2 t / 20 x 20 cm (typical tyre footprint area)
Fire rating:	B2
Resistant to:	acids, oils, gasoline
Operating temperature:	-30° to +60° C
Length:	870 mm
Width:	120 mm
Height:	20 mm
Weight:	1.24 kg

CABLE PROTECTION SYSTEMS



8530##### DEFENDER WHEELCHAIR RAMP

The Defender® WHEELCHAIR RAMP has been designed for use with the Defender® MIDI cable protection system also providing easy access for walking frames, trolleys and dollies. The set includes a Defender® MIDI cable guard with blue lid and bolt holes for the required ground fixing, 6 threshold ramps and 4 side slants. Made from acid, oil, solvent and gasoline resistant TPU (Thermoplastic Polyurethane) the Defender® WHEELCHAIR RAMP components are also available individually for ramp width extension. Please note: the Defender® Wheelchair Ramp does not support vehicle traffic.

DEFENDER® WHEELCHAIR RAMP SET

Art. No.: 85305SET

DEFENDER® WHEELCHAIR RAMP COMPONENTS

- Art. No.: 85300BLUE Defender® MIDI Cable Protector
- Art. No.: 85306 Threshold Ramp
- Art. No.: 85307L Side Slant left
- Art. No.: 85307R Side Slant right

SPECIFICATIONS

Product:	Wheelchair ramp set
Channel W x H:	34 x 36 mm (channels 1 to 5)
Material:	TPU (Thermoplastic Polyurethane)
Shore A hardness:	88 ± 4
Load capacity:	approx. 5 t / 20 x 20 cm (typical tyre footprint area)
Fire rating:	B2 (B1 also available)
Resistant to:	most acids, oils, gasoline
Operating temperature:	-30° to +60° C
Length:	1340 mm
Width:	Ramp: 930 mm
Height:	62 mm
Weight:	30.05 kg

CABLE PROTECTION SYSTEMS



85BOX DEFENDER BOX THE SMART LOGISTIC STORAGE SOLUTION

The Defender® BOX is the ideal solution for transporting and storing Defender® cable protection systems. The sturdy design features a EUR-pallet size base made of heavy duty plastic and hinged steel grate sides for easy loading. For additional convenience the Defender® BOX is stackable and collapsible.

SPECIFICATIONS

Product:	Storage and transport box
Material:	PE and steel with lacquer coating
Load capacity:	≤ 1 t
Dimensions (W x H x D):	1250 x 1285 x 840 mm
Weight:	50.5 kg



ADAM HALL STAGE FABRICS – PROTECTIVE AND DECORATIVE

Adam Hall provides a wide range of stage fabrics for protective and decorative purposes. These include lightweight stage mesh that is wind-permeable and tear-resistant, fence panel gauze or blackout cloth for backdrops and curtains. Our stage fabrics are available in bulk and convenient ready-made sizes.

STAGE FABRICS

GAUZE	38-41
BACKDROPS & CURTAINS	42-45
ACCESSORIES	46

GAUZE IS ESSENTIAL FOR STAGES, FOH AND DELAY TOWERS OR PLATFORMS

The lightweight but stable-and tear-resistant stage mesh is especially suited for outdoor events as covers, backdrops, curtains, and for privacy. The permeability of the material is an important property, as it prevents stress due to wind, gusts and storms, and ensures a stable structure.

The stage gauze by Adam Hall is available in four grades from close to loose-knit with different levels of opacity and a wind permeability of 16 to 50%. You will be able to find the appropriate material for almost all weather conditions. All versions are water-resistant, acid- and weatherproof, UV-resistant, colour-fast and washable for up to 3 years, and suitable for temperatures from -30° to 70°.

It will save time in setting up, and can be easily attached to all truss systems using cable ties or Spannfix. In addition to providing protection for stage equipment and performers, it also creates a professional look. The gauze fabrics by Adam Hall can be individually printed upon request, and can therefore be turned into an eye-catching advertising space.

GAUZE FOR OUTDOOR EVENTS

The mesh, most likely named after the Palestinian city of Gaza, is also used for open-air events, where it is used in the panelling of stage structures, FOH and delay-towers, podiums and for setting up stages. Known in English as "stage mesh", the material also serves as backdrops, stage curtains and especially for privacy and as protection against dust and wind.

MAIN FEATURES OF GAUZE

The mesh fabric, made of polyethylene, has special characteristics and is suitable for a broad scope of applications: it is extremely tear-resistant, structurally stable, while being lightweight and classified as a B1 flame retardant according to the DIN 4102 standard. It is also water-resistant, weatherproof, UV resistant and last but not least, it is washable.

GAUZE IS A WIND-PERMEABLE!

The most important feature of the stage gauze is its wind permeability. It prevents the sail effect and ensures stability for mobile constructions, even at higher wind speeds. Adam Hall offers this material in four different grades ranging from fine to loose knit, with wind permeability factors of 16 to 50%. So, the stability of stage structures can be accurately calculated and the appropriate mesh selected according to the weather forecast and wind strength.

GAUZE AND TRANSPARENCY

The weave structure also determines the levels of blackout and sound permeability. Therefore, loose-knit mesh is suitable for covering speaker towers, while the particularly fine-mesh material is already opaque from a distance of five metres.

FURTHER USES FOR GAUZE

Thanks to its special properties, the polyethylene gauze is not only used in the event-technology – it is for example ideally suited as turf protection, because it is breathable, for the lining of trade fair stands, as paintball netting and for fence panel covering. With the B1 classification, it is also suitable as a cover for sprinkler systems on ceilings.

GAUZE FROM ADAM HALL

Gauze from Adam Hall is available in black and white, by the metre, and is ready-made with hem and eyelets. It can be easily attached with cable ties to all carrier systems and trusses, protects technology as well as performers whilst offering a professional stage appearance.



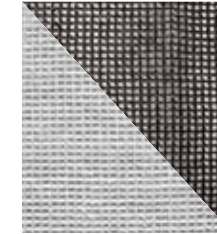
GAUZE 100

- Type: 100, high density.
- Colour: black or white.
- Weight: 250 g/m².
- Flame retardancy: B1 (DIN 4102).
- Wind-permeable: 16 %.
- Additionally M1 certified (France)



GAUZE 201

- Type: 201, large mesh.
- Colour: black or white.
- Weight: 125 g/m².
- Flame retardancy: B1 (DIN 4102).
- Wind-permeable: 50 %.



GAUZE 202

- Type: 202, medium mesh.
- Colour: black or white.
- Weight: 140 g/m².
- Flame retardancy: B1 (DIN 4102).
- Wind-permeable: 37 %.



GAUZE 203

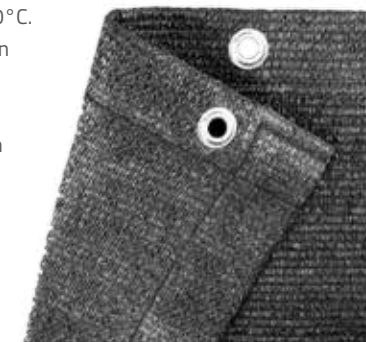
- Type: 203, fine mesh.
- Colour: black.
- Weight: 160 g/m².
- Flame retardancy: B1 (DIN 4102).
- Wind-permeable: 27 %.
- Additionally EMPA (Swiss) certified.



GAUZE GENERAL INFORMATION

- Ready for use!
- Completely bordered and provided with eyelets every 50 cm (all around).
- UV and fade resistant up to 3 years.
- Washable.
- Non-transparent from a distance of 5 m approx.
- Temperature range -30° to +70°C.
- Custom-made sizes available on request.
- Tolerances of +/- 5% are due to technical reasons depending on temperature and humidity.
- Applications: stage mesh, site fence, grass protection matting, wind, sun and dust screen, exhibition stand cladding.

**CUSTOMISABLE
WITH YOUR LOGO!**



Art.No.	Description	Sold per
0155100B	Gauze 100, width 3m, black	LM
0155X34B	Gauze 100 3 x 4 m with grommets, black	PC
0155X35B	Gauze 100 3 x 5 m with grommets, black	PC
0155X36B	Gauze 100 3 x 6 m with grommets, black	PC
0155X45B	Gauze 100 4 x 5 m with grommets, black	PC
0155X46B	Gauze 100 4 x 6 m with grommets, black	PC
0155X56B	Gauze 100 5 x 6 m with grommets, black	PC
0155X34W	Gauze 100 3 x 4 m with grommets, black	PC
0155X35W	Gauze 100 3 x 5 m with grommets, white	PC
0155X36W	Gauze 100 3 x 6 m with grommets, white	PC
0155X45W	Gauze 100 4 x 5 m with grommets, white	PC
0155X46W	Gauze 100 4 x 6 m with grommets, white	PC
0155X56W	Gauze 100 5 x 6 m with grommets, white	PC
0155100W	Gauze 100, width 3 m, white	LM
0156100B	Gauze 201, width 3 m black	LM
0156X34B	Gauze 201 3 x 4 m with grommets, black	PC
0156X35B	Gauze 201 3 x 5 m with grommets, black	PC
0156X36B	Gauze 201 3 x 6 m with grommets, black	PC
0156X45B	Gauze 201 4 x 5 m with grommets, black	PC
0156X46B	Gauze 201 4 x 6 m with grommets, black	PC
0156X56B	Gauze 201 5 x 6 m with grommets, black	PC
0156X34W	Gauze 201 3 x 4 m with grommets, black	PC
0156X35W	Gauze 201 3 x 5 m with grommets, white	PC
0156X36W	Gauze 201 3 x 6 m with grommets, white	PC
0156X45W	Gauze 201 4 x 5 m with grommets, white	PC
0156X46W	Gauze 201 4 x 6 m with grommets, white	PC
0156X56W	Gauze 201 5 x 6 m with grommets, white	PC
0156100W	Gauze 201, width 3 m, weiß	LM
0157100B	Gauze 202, width 3 m, black	LM
0157X34B	Gauze 202 3 x 4 m with grommets, black	PC
0157X35B	Gauze 202 3 x 5 m with grommets, black	PC
0157X36B	Gauze 202 3 x 6 m with grommets, black	PC
0157X45B	Gauze 202 4 x 5 m with grommets, black	PC
0157X46B	Gauze 202 4 x 6 m with grommets, black	PC
0157X56B	Gauze 202 5 x 6 m with grommets, black	PC
0157X34W	Gauze 202 3 x 4 m with grommets, white	PC
0157X35W	Gauze 202 3 x 5 m with grommets, white	PC
0157X36W	Gauze 202 3 x 6 m with grommets, white	PC
0157X45W	Gauze 202 4 x 5 m with grommets, white	PC
0157X46W	Gauze 202 4 x 6 m with grommets, white	PC
0157X56W	Gauze 202 5 x 6 m with grommets, white	PC
0157100W	Gauze 202, width 3 m, white	LM
0158100B	Gauze 203, width 3 m, black	LM
015850B	Gauze 203, width 2 m, black	LM
0158X34B	Gauze 203 3 x 4 m with grommets, black	PC
0158X35B	Gauze 203 3 x 5 m with grommets, black	PC
0158X36B	Gauze 203 3 x 6 m with grommets, black	PC
0158X45B	Gauze 203 4 x 5 m with grommets, black	PC
0158X46B	Gauze 203 4 x 6 m with grommets, black	PC
0158X56B	Gauze 203 5 x 6 m with grommets, black	PC
0158X34W	Gauze 203 3 x 4 m with grommets, white	PC
0158X35W	Gauze 203 3 x 5 m with grommets, white	PC
0158X36W	Gauze 203 3 x 6 m with grommets, white	PC
0158X45W	Gauze 203 4 x 5 m with grommets, white	PC
0158X46W	Gauze 203 4 x 6 m with grommets, white	PC
0158X56W	Gauze 203 5 x 6 m with grommets, white	PC

PC: Piece / LM: Linear meter

FENCE PANEL GAUZE

GAUZE TYPE 800 - 1.76 X 3.41 M, WITH EYELETS

Adam Hall fence panel covers are made of high density polyethylene which is perfect for vision and dust protection for open-air events and construction sites. The 1.76 x 3.41 m large tarpaulins are PVC reinforced at the hems, are fitted all the way around with eyelets at 50 cm intervals and are suitable for all standard mobile fences. The close-knit, 200 g heavy mesh fabric with high opacity is 20% wind permeable, waterproof, weather resistant and flame resistant according to DIN 4102-B1. Adam Hall fence panel covers are available in 9 colours (black RAL9005, grey RAL7040-7045, white, RAL9003 green RAL6028 dark blue RAL5003, light blue RAL5017, red RAL3020, orange RAL2009, yellow RAL1016-1018).



FEATURES

- PVC-reinforced hem and eyelets all the way around (50 cm intervals).
- Zinc plated eyelets.
- Inner diameter of the eyelets: 0.9 cm, outer diameter 2 cm.
- Waterproof, weather resistant.
- Non-transparent from a distance of 5 m approx.
- Temperature range from -30°C to +70°C.
- Wind Permeability: approx. 20%.
- B1 certified in accordance with DIN 4102.
- Dimensional tolerances of +/- 5% are of a technical nature and depend on the temperature and humidity.
- For use as screening at open-air events or as a construction fence panel to prevent dust.

SPECIFICATIONS

Material:	HDPE (high density polyethylene).
Type:	800, close-knit.
Width:	3.41 m.
Height:	1.76 m.
Weight:	200 g/m ² .
Fire Protection Class:	flame retardant according to DIN 4102-B1.
Wind Permeability:	20%.



FENCE PANEL GAUZE



Black - Art. No. 0159XBAU1



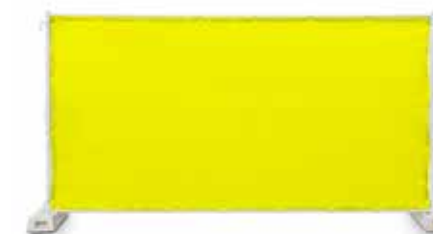
Grey - Art. No. 0159XBAU2



White - Art. No. 0159XBAU3



Green - Art. No. 0159XBAU4



Yellow - Art. No. 0159XBAU5



Dark Blue - Art. No. 0159XBAU6



Light Blue - Art. No. 0159XBAU7



Red - Art. No. 0159XBAU8



Orange - Art. No. 0159XBAU9

BACKDROPS & CURTAINS



0150 / 150WH BLACKOUT CLOTH

MADE IN GERMANY!

- Fire protection class: Flame retardant according to DIN 4102 B1 and France M1 / EN 13773
- Width: 3 m
- Weight: 300 g/m²
- Colour: black or white

Fireproof due to impregnation -
Do not wash Molton.



0151B / 0151WH DECO CLOTH

MADE IN GERMANY!

- Fire protection class: Flame retardant according to DIN 4102 B1 and France M1 / EN 13773
- Width: 3 m
- Weight: 160 g/m²
- Colour: black or white

Fireproof due to impregnation -
Do not wash Molton.



0160 B / 0160 WH ACOUSTIC CLOTH

MADE IN GERMANY!

- Fire protection class: Flame retardant according to DIN 4102 B1 and France M1 / EN 13773
- Width: 3 m
- Weight: 500 g/m²
- Colour: black or creme
- Weighted sound absorption coefficient (ISO 11654):
w = 0,70 creme / 0.60 black
- SOUND Reduction Coefficient NRC (ASTM C423): 0,65 creme / 0,60 black
- Fire protection class: Flame retardant according to DIN 4102 B1 and France M1 / EN 13773

Fireproof due to impregnation -
Do not wash Molton.

BACKDROPS & CURTAINS



0151X## DECO CURTAINS

MADE IN GERMANY!

Black deco cloth impregnated in flame retardant and 160-g-quality, as curtain, backdrops or for decorative purposes. The fabrics have grommets at intervals of 25 centimeters along one side and are backed with an additional strip of webbing, permitting fast and secure installation both tightly stretched as well as loosely pleated. The grommets have a rustproof burnished plating and a 20-millimetre hole diameter. The outer edges are hemmed, while the bottom edge is unhemmed, so that the material can be cut to the necessary length quickly and easily.

Art. No.	Size
0151X33 / 0151X33WH	3 x 3m black or white
0151X34 / 0151X34WH	3 x 4m black or white
0151X35 / 0151X35WH	3 x 5m black or white
0151X36 / 0151X36WH	3 x 6m black or white
0151X43 / 0151X43WH	4 x 3m black or white
0151X53 / 0151X53WH	5 x 3m black or white
0151X63 / 0151X63WH	6 x 3m black or white
0151X64 / 0151X64WH	6 x 4m black or white
0151X66 / 0151X66WH	6 x 6m black or white



0152X## STAGE CURTAINS

MADE IN GERMANY!

Stage Cloth impregnated with fire retardant (B1 according to DIN 4102) and 300-g-quality, as curtain, backdrops or for decorative purposes. The fabrics have grommets at intervals of 25 centimetres along one side and are backed with an additional strip of webbing, permitting fast and secure installation both tightly stretched as well as loosely pleated. The grommets have a rustproof burnished plating and a 20-millimetre hole diameter. The outer edges are hemmed, while the bottom edge is unhemmed, so that the material can be cut to the necessary length quickly and easily.

Art. No.	Size
0152X33 / 0152X33WH	3 x 3 m black or white
0152X36 / 0152X36WH	3 x 6 m black or white
0152X43 / 0152X43WH	4 x 3 m black or white
0152X53 / 0152X53WH	5 x 3 m black or white
0152X63 / 0152X63WH	6 x 3 m black or white
0152X64 / 0152X64WH	6 x 4 m black or white
0152X93 / 0152X93WH	9 x 3 m black or white
0152X96 / 0152X96WH	9 x 6 m black or white

BACKDROPS & CURTAINS



0160X## ACOUSTIC-CLOTH B1 WITH BURNISHED GROMMETS HEMMED

MADE IN GERMANY!

Acoustic Curtains impregnated in flame retardant and 500-g-quality, for rehearsal room, studios and stages with excellent sound absorption coefficient. The fabrics have grommets at intervals of 25 centimeters along one side and are backed with an additional strip of webbing, permitting fast and secure installation both tightly stretched as well as loosely pleated. The grommets have a rustproof burnished plating and a 20-millimetre hole diameter. The outer edges are hemmed, while the bottom edge is unhemmed, so that the material can be cut to the necessary length quickly and easily.

Sold by linear meter!

Art. No.	Size
0160X33 / 0160X33WH	3 x 3 m black or creme
0160X43 / 0160X43WH	4 x 3 m black or creme
0160X53 / 0160X53WH	5 x 3 m black or creme



ACCESSORIES



859## FINE-GROOVED RUBBER MAT

- 2,6 mm (± 0,2 mm) thick
- Non-slip. Resilient covering for all high traffic areas.
- Weather proof.
- Lies flat.
- Coarsely patterned underside.
- Ideal for protecting cables of all types.
- Matting can be trimmed to the desired size.

We recommend the use of this product in combination with adhesive safety tape **5803**.

Art. No.	Size	Weight
859008	1.0 x 8.0 m	26.8 kg
85970	0.7 x 10.0 m	23.0 kg



58## HOOK AND LOOP FASTENER DOUBLE ROLL

Hook & Loop fastening tape.
Sold in 25 m twin rolls.

Art. No.	Width
5810	20 mm
5811	20 mm (self-adhesive)



58## BACK TO BACK HOOK AND LOOP FASTENER

Back-to-Back tape, one side hooks, other side loops. Good solution to manufacture strong and custom made cable ties, also to be used for many applications in speaker cabinet and case building.

- Length: 25 m

Art. No.	Width
5815	16 mm
5816	20 mm
5817	30 mm

ACCESSORIES



VBC4250### SPANNFIX

Spannfix bungee cord 4 mm x 250 mm with plastic hook. The ideal reusable elastic chord for fixing and mounting signs, banners, covers etc.

▪ Weight: 0.02 kg.

Art. No.	Width
VBC4250BLK	black
VBC4250WHI	white



VMINC### HOLDON CLIP - MINI

Mini Clip black for fastening molton, canvas, covers etc. This clip is particularly suited for fastening materials that do not have eyelets or other fastening possibilities. The material is simply clamped down by the clip, so that the material itself does not get damaged.

▪ Dimensions (WxHxD):
35 x 10 x 40 mm
▪ Weight: 0.02 kg.

Art. No.	Color
VMINCBLK	black
VMINCWHI	white



VBC4250### SPANNFIX

Spannfix bungee cord 4 mm x 250 mm with plastic hook. The ideal reusable elastic chord for fixing and mounting signs, banners, covers etc.

▪ Weight: 0.02 kg.

Art. No.	Width
VBC4250BLK	black
VBC4250WHI	white



VMINC### HOLDON CLIP - MINI

Mini Clip black for fastening molton, canvas, covers etc. This clip is particularly suited for fastening materials that do not have eyelets or other fastening possibilities. The material is simply clamped down by the clip, so that the material itself does not get damaged.

▪ Dimensions (WxHxD):
35 x 10 x 40 mm
▪ Weight: 0.02 kg.

Art. No.	Color
VMINCBLK	black
VMINCWHI	white



VBC5250### SPANNFIX

Spannfix bungee cord 5 mm x 250 mm with metal hook.

▪ Weight: 0.03 kg.

Art. No.	Color
VBC5250BLK	black
VBC5250WHI	white



VMIDC### HOLDON CLIP - MIDI

Midi Clip black (holds up to 100 kg) for fastening molton, canvas, covers etc. This clip is particularly suited for fastening materials that do not have eyelets or other fastening possibilities. The material is simply clamped down by the clip, so that the material itself does not get damaged.

▪ Dimensions (WxHxD):
40 x 18.5 x 70 mm
▪ Weight: 0.02 kg.

Art. No.	Color
VMIDCBLK	black
VMIDCWHI	white



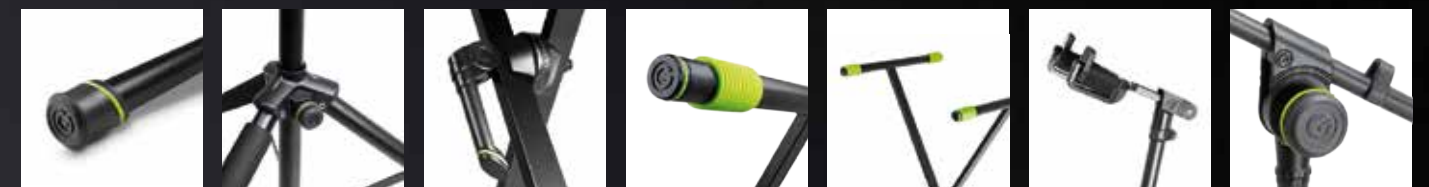
MILLIONS SAW THE APPLE FALL,
ISAAC NEWTON ASKED "WHY"?

MILLIONS SAW STANDS BREAK,
WE ASKED "WHY"?



DISCOVER OUR INNOVATIVE PREMIUM STANDS

available colours:





ADAM HALL PDUs AND POWER STRIPS - POWER WHERE YOU NEED IT

Available from heavy duty 19" rackmount to economy versions Adam Hall power distribution units and power strips come in a variety of configurations. Featuring front or rear facing outlets, flip lid covers, illuminating switches or daisy chaining capability they provide a choice of models for professional, office and home applications.

POWER DISTRIBUTION

POWER DISTRIBUTION 50-57



POWER DISTRIBUTION



87480 19" / 2U POWER DISTRIBUTION UNIT 9 SOCKETS

Blue Amping Power. 19"/2 U mains distribution Unit, designed for stage use, fulfilling all relevant safety requirements at an affordable price.

- 3 x indicator lights to control Phase L1, L2, L3
- Power inlet via 32A CEE 5 pole panel plug red colour
- Parallel 32 A panel socket outlet red colour, outlet front panel
- 3 x safety plug socket with flip cover, grey colour fused 3 x C16A automatic circuit breaker
- Outlet rear 6 x safety plug socket with flip cover
- Dimensions: 483 x 88 x 70 mm
- Sheet steel powder coated housing
- Made in Germany, compliant to CE/VDE/DIN
- Weight: 3.06 kg

POWER DISTRIBUTION



87472 19" / 2U POWER DISTRIBUTION UNIT 9 SOCKETS

16 A / 250 V AC

On the front, 3 practical outlets with hinged lids. On the rear, 6 diagonally arranged sockets for easy insertion of power supplies, angle plugs, etc. With independent twin-pole power switches for separate switching of the front and rear. Robust powder coated steel housing.

- Includes a 3m x 1.5 mm² mains chord with safety plug (CEE 7/7).
- Dimensions (WxDxH): 483 x 88 x 90 mm
- Installation depth: 75 mm
- Weight: 1.95 kg

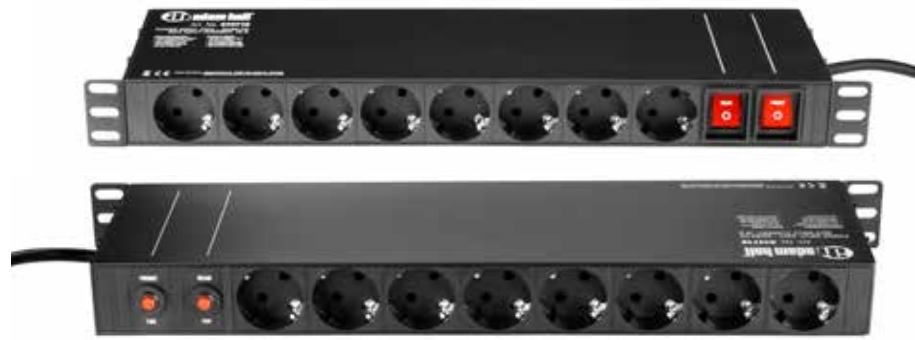


87473 19" POWER DISTRIBUTION UNIT 6 SOCKETS, 3 CIRCUITS

Mains distribution unit with three separate circuits 19"/1 U. 3 x 2 safety plugs outlets (red/white/black) with 16A/250 V AC each.

- Black aluminium housing
- 2 m cable with 16A 400V per phase CEE plug
- Weight 1.12 kg

POWER DISTRIBUTION



874716 POWER STRIP 1 U 19 SOCKETS

The 874716 provides 16 type F grounded outlets in a 19" aluminum enclosure with permanently attached 2 m cord and angled CEE 7/7 power plug. The 1 U rackmount power strip features individual illuminating on/off switches for the 8 front and rear outlets each plus overload protection with individual circuit breakers and reset buttons.



AHPROPORT4 4-OUTLET POWER STRIP

Designed for easy daisy chaining, the PROPORT 4 power strip provides 4 type F grounded outlets with individual flip lid covers plus blue and white power I/O connectors. Featuring a rugged all-metal enclosure and two female thread M10 suspension points it is ideal for neat, custom power distribution on stages, trusses and in gear rigs.

- Rated @ 250 V, 16 A.
- 4 IP54 outlets with flip lid covers
- Blue and white power I/O connectors
- All-metal enclosure
- 2 M10 inserts
- GS and CE marks



87471 19" POWER DISTRIBUTION UNIT 8 SOCKETS

1 U, with illuminated 2-pole switch on the front panel and 8 safety plug mains outlets on the rear panel. 16A/250 V AC.

- Black aluminium housing
- 54 mm deep with 2 m cable
- Weight 0.85 kg
- Mains Distribution Unit 19"/1 U
- 19" ears can be turned around

Also available with "french standard" connectors **87478**.

POWER DISTRIBUTION



87471USB 8-OUTLET 19" RACKMOUNT POWER STRIP WITH DUAL USB CHARGING PORTS AND ON/OFF SWITCH

The 87471USB features eight type F grounded safety outlets plus two type A USB ports to charge most USB devices. This professional 19" power strip comes in a rugged aluminium housing with permanently attached 2 m power cord, illuminated on/off rocker switch and reversible rackmount angle brackets.

- Product Type : Multiple socket
- Type: 19" / 1 U
- Number of outlets (earthing contact/ IEC 7/4):45° angled, 8
- USB connector: Typ A
- Max. charge current: 1A
- Cable connector: Earthing contact (CEE 7/7), angled
- Conductor cross-section: 3X1.5qmm
- Operating Voltage: 250V
- Max. current: 16A
- Housing material: aluminium
- Width: 485mm
- Height: 44mm
- Depth: 44mm
- Other Features: Mounting brackets can be used in 4 positions
- Illuminated on / off switch



87478 19" MAINS POWER STRIP 8 SOCKETS, FRENCH CONNECTORS

- Mains Distribution Unit 19"/1 U
- Illuminated 2-pole switch on the front panel
- 8 french mains outlets on the rear panel
- 16A/250 V AC
- Black aluminium housing
- 54 mm deep
- 2 mtr. cable
- 19" ears can be turned around

POWER DISTRIBUTION



87470 POWER DISTRIBUTION UNIT 4 SOCKETS

Professional compact mains distribution unit with four safety plug mains. Built in a stable aluminium housing 30 cm length (not 19"). Ideal for power adaptors due to the larger spacing between the outlets. Four mounting positions are possible thanks to the variable mounting clips. Predestinated to be screwed to the inside of racks or similar surfaces (screws not included).

- Length of cable: 2 m
- Weight: 0.6 kg
- Cross section of the inner conductors: 3 x 1,5mm²
- 16 A / 250V AC

Also available with USB power outlets: **87470USB**

87470USB 4-OUTLET POWER STRIP WITH DUAL USB CHARGING PORTS

The 87470USB features four type F grounded safety outlets plus two type A USB ports to charge most USB devices. This professional power strip comes in a rugged aluminium housing with permanently attached 2 m power cord and mounting angles that provide four mounting positions. The wide spacing of the 45° angled outlets easily accommodates multiple AC adapters side by side.

- Weight 0.56 kg



POWER DISTRIBUTION



874714 POWER STRIP 1 U 14 SOCKETS

- Power distributor with long (3m) cord for up to 14 devices.
- 12 Safety sockets and 2 IEC sockets (not 19")
- Type: 96cm/ 44,5 mm
- Number of outlets (earthing contact / IEC 7/4): 45° angle, 12
- Number of outlets (IEC C14): 2
- Cable Length: 3 m
- Cable connector: Earthing contact (CEE 7/7), angled
- Conductor cross-section: 2.5 mm²
- Operating Voltage: 250 V
- Max. current: 16 A
- Housing material: aluminium
- W/H/D: 960 x 44 x 44 mm
- Other Features: Illuminated on / off switch, mounting bracket



8747IP3 3-OUTLET POWER STRIP WITH IP 44 RATING

The IP44 rated 8747 IP 3 features three type F grounded outlets and 1.4 m power cord with standard earthing contact CEE 7/7 power plug for additional reach and flexibility. It is suitable for general outdoor use.

- IP44 power strip
- Rated @ 250 V, 16 A
- 45° angled outlets



8747IP5 5-OUTLET POWER STRIP WITH IP44 RATING

The IP44 rated 8747 IP 5 features five type F grounded outlets and 1.4 m power cord with standard earthing contact CEE 7/7 power plug for additional reach and flexibility. It is suitable for general outdoor use.

- IP44 power strip
- Rated @ 250 V, 16 A
- 45° angled outlets

POWER DISTRIBUTION



8747S3 3-OUTLET POWER STRIP WITH ON/OFF SWITCH

The 8747S3 features three type F grounded outlets, an illuminated on/off switch and 1.4 m power cord for additional reach and flexibility.



8747S6 6-OUTLET POWER STRIP WITH ON/OFF SWITCH

The 8747S6 features six type F grounded outlets, an illuminated on/off switch and 1.4 m power cord for additional reach and flexibility.



8747S3USB 3-OUTLET POWER STRIP WITH DUAL USB CHARGING PORTS AND ON/OFF SWITCH

The 8747S3USB features three type F grounded outlets, two USB ports to charge most USB devices, an illuminated on/off switch and 1.4 m power cord for additional reach and flexibility.

POWER DISTRIBUTION



8747X3 3-OUTLET POWER STRIP

The 8747X3 features three type F grounded outlets, with an 1.4 m power cord for additional reach and flexibility.

- Rated 250 V, 16 A
- Cable Length: 1.4 m
- Cable connector: Earting contact (CEE 7/7), angled
- Conductor cross-section: 3 x 1.5 mm²
- Operating Voltage: 250 V
- Max. current: 16 A
- Other Features: child protection



8747X6 6-OUTLET POWER STRIP

The 8747X6 features three type F grounded outlets, with an 1.4 m power cord for additional reach and flexibility.

- Rated 250 V, 16 A
- Conductor cross-section: 3 x 1.5 mm²
- Operating Voltage: 250 V
- Max. current: 16 A
- Other Features: child protection



ADAM HALL SAFETY CABLES - SECURE AND PROTECT

Adam Hall safety cables and wire ropes guard lighting fixtures and sound equipment against falling should the main attachment method fail. They are essential in stage rigging and fixed installations to meet legal safety requirements and available with heavy duty thimbles, screw links and carabiners.

SAFETIES

SAFETIES 60-61

FLYWARE 62

SAFETIES



S37062B
SAFETY ROPE 3 MM WITH SCREW LINK LENGTH 0.6 M BLACK

- 3 mm safety cable black
- Length: 0.6 m
- Galvanised
- 6 x 19 + fibre core
- Eyelet at both ends
- One end with non detachable chain link (galvanised, 5 mm thick)
- Stamped according to DIN 56926 (code number: 140)
- Up to 10 kg device weight
- Weight: 0.07 kg



S45062B
SAFETY ROPE 4 MM WITH SCREW LINK LENGTH 1 M BLACK

- 4 mm safety cable
- Length: 0.6 m
- Black galvanised
- 6 x 19 + fibre core
- Eyelet at both ends
- One end with unlosable chain link (black galvanised, 6 mm thick) 0.60 m
- Stamped according to DIN 56926 (code number: 200)
- Up to 20 kg device weight when using two safety cables
- Weight: 0.11 kg



S53102B
SAFETY ROPE 5 MM WITH SCREW GATE CARABINER LENGTH 1 M BLACK

- 5 mm safety cable
- Length: 1.0 m
- Black galvanised
- 6 x 19 + fibre core
- Eyelet at both ends
- One end with unlosable Kettbiner (black galvanised, 90 x 8 mm)
- Stamped according to DIN 56926 (code number: BGV C1)
- Up to 45 kg device weight when using two safety cables
- Weight: 0.26 kg



S42100
SAFETY ROPE 4 MM LENGTH 1 M

- 4 mm safety cable
- Length: 1.0 m
- Galvanised
- 6 x 19 + fibre core
- Eyelet at both ends
- Up to 30 kg device weight when using two safety cables
- Weight: 0.08 kg

ATTENTION: Chain link S93061 has to be ordered separately



S37060
SAFETY ROPE 3 MM WITH SCREW LINK LENGTH 0.6 M

- 3 mm safety cable
- Length: 0.6 m
- Galvanised
- 6 x 19+ fibre core
- Eyelet at both ends
- One end with non detachable chain link (galvanised, 5mm thick)
- Stamped according to DIN56926 (code number: 140)
- Up to 10 kg device weight
- Weight: 0.05 kg



S45100
SAFETY ROPE 4 MM WITH SCREW LINK LENGTH 1 M

- 4 mm safety cable
- Length: 1.0 m
- Galvanised
- 6 x 19 + fibre core
- Eyelet at both ends
- One end with unlosable quick screw link (90 x 9, with screw lock)
- Stamped: WLL 250 kg W/K
- Up to 20 kg device weight when using two safety cables
- Weight: 0.13 kg



S53100
SAFETY ROPE 5 MM WITH SCREW GATE CARABINER LENGTH 1 M

- 5 mm safety cable
- Length: 1.0 m
- Galvanised
- 6 x 19 + fibre core
- Eyelet at both ends
- One end with unlosable Kettbiner (90 x 8, with screw connection)
- Stamped: BGV C1 200 kg IW
- Up to 45 kg device weight when using two safety cables
- Weight: 0.22 kg



S63100
SAFETY ROPE 6 MM WITH SCREW GATE CARABINER LENGTH 1 M

- 6 mm safety cable
- Length: 1.0 m
- Galvanised
- 6 x 19 + fibre core
- Eyelet at both ends
- One end with unlosable Kettbiner (90 x 8, with screw connection)
- Stamped: BGV C1 200 kg IW
- Up to 60 kg device weight when using two safety cables
- Weight: 0.29 kg



SAVEKING SHOCK ABSORBING SAFETY ROPE

Safety rope with an integral brake for controlled dissipation of fall energy, approved as a safety rope for use in the entertainment industry (BGV C1). When conventional wire ropes are used, high levels of linear momentum can result if secured equipment falls. SAVEKINGS wire ropes incorporate a loop with a brake clamp. In the event of a fall, the loop constricts, thus absorbing the high shock forces. A color marking on the brake clamp serves as an indicator that the rope is in good condition.

Art. No.	Up to	Thick.	Length	Weight
S33060SK	20 kg	3.0 mm	0.6 m	0.07 kg
S43060SK	40 kg	4.0 mm	0.6 m	0.13 kg
S43100SK	40 kg	4.0 mm	1.0 m	0.15 kg
S55100SK	60 kg	5.0 mm	1.0 m	0.26 kg



S82100
SAFETY ROPE 8 MM LENGTH 1 M

- 8 mm safety cable
- Length: 1.0 m
- Galvanised
- 6 x 19 + fibre core
- Eyelet at both ends
- Stamped: BGV C1 I.W 8 mm 295 kg
- Up to 100 kg device weight when using two safety cables
- Weight: 0.38 kg

ATTENTION: Chain link S93100 has to be ordered separately!



S50500
SAFETY ROPE 5 MM LENGTH 5 M FOR S50S WIRE CLIP FOR ROPES 4 - 5 MM

- 5 mm Safety Cable
- Length: 5.0 m
- Galvanised
- 6 x 19 + fibre core
- Tin-plated at one end with Eyelet at the other end
- Weight: 0.50 kg



S80500
SAFETY ROPE 8 MM LENGTH 5 M FOR S80VS WIRE CLIP FOR ROPES 6 - 8 MM

- 8 mm Safety Cable
- Length: 5.0 m
- Galvanised
- 6 x 19 + fibre core
- Tin-plated at one end with Eyelet at the other end
- Weight: 1.20 kg

FLYWARE



572# CARGO RESTRAINT TRACK BLACK

Cargo restraint track for directional adjustment of flying P.A. systems.

- Fixings M6 x 40 countersunk
- Finish: Black anodised aluminium
- Loading: 1000 kg horizontally, 1700 kg vertically

Art. No.	Length	Weight
5720	15.0 cm	0.09 kg
5721	22.5 cm	0.14 kg



5725 FLYING PLATE / ANCHOR PLATE

- Loading: 900 kg horizontally, 1800 kg vertically.
- Mounting holes: 5.1 mm.
- Weight: 0.02 kg.



5745 SINGLE STUD RING

- Roping eye.
- Single cargo spring stud
 - To clip into 5725, 5720, 5721
 - Ring inside diameter: 29,5 mm
 - Max Load Bearing: 300 daN
 - Weight: 0.05 kg



S50SV2 WIRE CABLE GLIDER FOR 4 - 5 MM CABLES WITH COUPLING RING

- Diameter: 25mm
- Total length: 87mm
- For wire cables with a diameter of: 4.0 and 5.0 mm
- Outside diameter of ring: 54mm
- Inside diameter of ring: 30mm
- Workload: 80 kg (cable diameter 4.0. mm) and 130 kg (cable diameter 5.0 mm)
- Other features: BG- and TÜV-certified
- Weight: 0.28 kg



5740A DOUBLE STUD RING

Cargo restraint Twin stud & ring to suit 5720 and 5721 tracking

- Forged steel, Finish: Zinc plated.
- Breaking Strain: 2400 daN
- Weight: 0.17 kg



57041 LOCKABLE CARABINER

Heavy Duty Carabiner, Steel zinc plated, with locking ring.

- Gate opening: 18 mm
- Safe Working Load Limit: 800 kg
- Breaking Load: 2.2 kN
- Weight: 0.18 kg



S93061 SCREW LINK LONG

- Chain Link for S42100.
- Galvanised
 - 6 mm thick
 - Stamped according to DIN 56926 (code number: 200)
 - WLL 350 kg
 - Weight: 0.06 kg



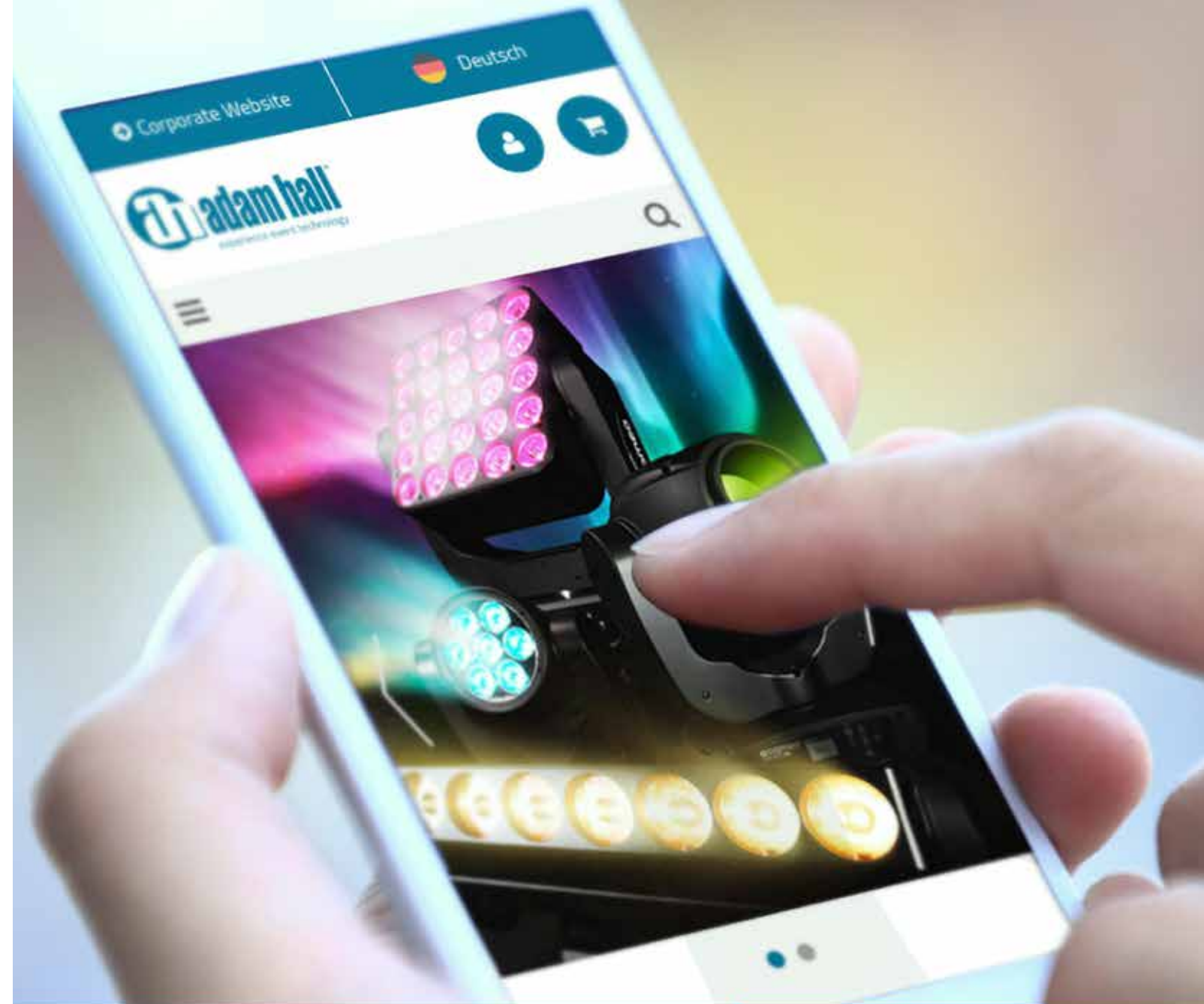
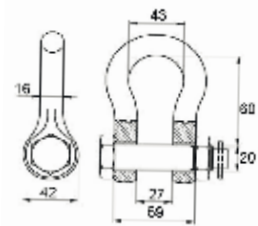
S93101 SCREW LINK LONG

- Chain Link for S82100.
- Galvanised
 - 10 mm thick
 - Stamped according to DIN 56926 (code number: 200)
 - WLL 1000 kg
 - Weight: 0.17 kg



SH20325 SCHACKLE WITH BOLT, NUT AND SPLIT PIN

- Nominal size 5/8"
- WLL 3250 kg
- Weight: 0.70 kg

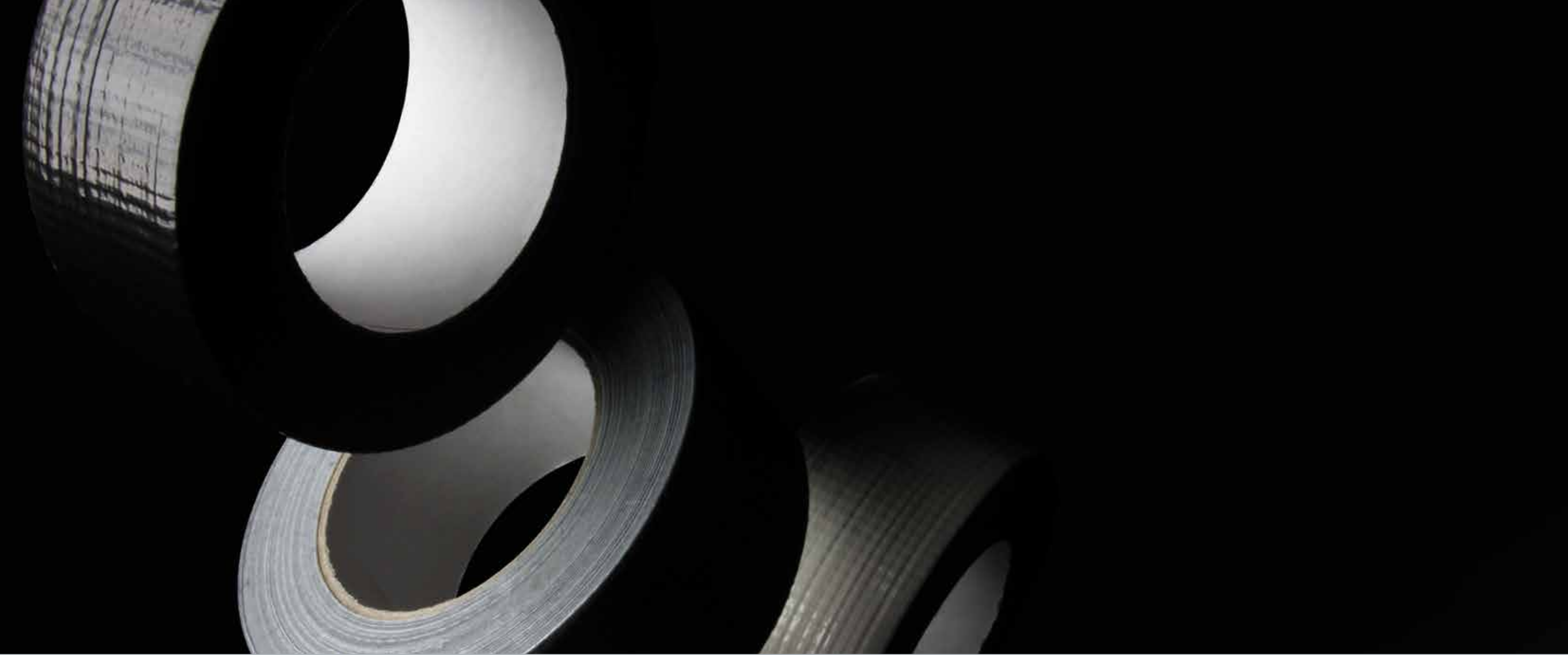


Our B2B shop Intuitively designed for you

- 🔒 Fast and secure shopping
- 🛒 High availability from one source
- 🏠 Reliable Adam Hall quality
- 🏷️ Your trade prices available at all times
- 🗨️ Exclusive deals and closeouts
- 📊 Inventory levels in real time
- 📦 New products at a glance

www.shop.adamhall.com





ADAM HALL STAGE TAPES - THE QUICK FIX

Simply indispensable for stage techs and musicians, adhesive tapes provide quick and effective solutions when it comes to bundling and securing cables or marking equipment. Covering all needs the Adam Hall range of tapes includes the classic gaffer tape, waterproof duct tape, anti-slip and safety tapes, flame-retardant insulating tapes and many more in various widths.

TAPES

TAPES 66-71

TAPES



58063### ADAM HALL PREMIUM GAFFER TAPE

Best quality, super sticky cloth backed adhesive tape 50 m x 50 mm.

- Rolls packed separately
- Weight: 0.45 kg

Art. No.	Colour
58063BLK	Black
58063S	Silver
58063W	White



5805### / 5807### GAFFA AT 200 / 202

Glossy - Best quality super sticky cloth backed adhesive tape, 50 mm x 50 m.

- Rolls packed separately.
- Weight: 0.73 kg

Art. No.	Colour
5805BLK	Black
5805S	Silver
5805W	White

Matt - Non reflecting:

Art. No.	Colour
5807BLK	Black
5807S	Silver
5807W	White



5806### GAFFA AT 169

- 50 m roll
- Strongest PCL tape
- Easy unwind and easy tear
- Very high initial stick
- Gloss finish
- Weight: 0.62 kg

Art. No.	Colour	Width
5806BLK	Black	50 mm
5806S	Silver	50 mm
5806W	White	50 mm
5806BLK100	Black	100 mm



TAPES

58205MBLK FOIL GAFFA TAPE MATT BLACK

For blocking off light leakages on heat generating equipment such as projectors, light cans, barn doors and similar equipment.

- Matt finish, non reflective surface.
- Flame retardant
- Temperature range: -20°C to +150°C
- Colour: matt black
- Width: 50 mm
- Length: 25 m
- Weight: 0.35 kg



58062### GAFFA AT 170

- 50 mm x 50 m roll
- Strongest PCL tape
- Easy unwind and easy tear
- Very high initial stick
- Gloss finish
- Single packed
- Weight: 0.65 kg

Art. No.	Colour
58062BLK	Black
58062S	Silver
58062W	White

58180ARMY WATERPROOF, BRONZE-GREEN PE-COATED TEXTILE TAPE

- Polyethylene-coated textile tape, coated with high-stick, pressure-sensitive adhesive
- Glossy finish
- Adapts to many different shapes.
- Strong
- Waterproof finish
- Good abrasion resistance
- Non-corrosive adhesive
- Strong immediate adhesion
- Removable without residue
- Can be written on
- Type: Textile tape
- Colour: bronze-green
- Width: 50 mm
- Length: 50 m
- Weight: 0.26 kg





5813 SELF-ADHESIVE MARKING TAPE

- Marking Tape for mixing consoles etc
- No glue residue
- Colour: white
- 19 mm x 33 m roll
- Weight: 0.12 kg

ADVANCE



5803 SAFETY TAPE BLACK/YELLOW

- Very high adhesion level - adheres well long term to rough surfaces. Low stretch - will not lift once applied. Good abrasion resistance - stands up well to foot and machinery traffic. Can be walked on immediately after application. Regulation colours should be used for marking hazards.
- Width: 50 mm
 - Length: 30 m
 - Weight: 0.33 kg

ADVANCE



580813### ADAM HALL INSULATING TAPE 0.13 X 19 MM X 20 M

- Flame retardant and self extinguishing - safe to use on electrical cables UV-resistant. 1
- 9 mm x 20 m
 - Weight 0.07 kg

Art. No.	Colour
580813BLK	Black
580813BLU	Blue
580813BRN	Brown
580813GREY	Grey
580813GRN	Green
580813RED	Red
580813VIO	Violette
580813W	White
580813YEGR	Yellow / Green
580813YEL	Yellow



580819### INSULATING TAPE 0.19 X 19 MM X 20 M

- Highly elastic and soft over a wide temperature range. Frost resistant. Flame retardant and self extinguishing - safe to use on electrical cables. Resistant to weather, abrasion, moisture, acids, corrosion, UV and aging.
- Weight: 0.11 kg.

Art. No.	Colour
580819BLK	Black
580819BLU	Blue
580819RED	Red
580819W	White
580819YEL	Yellow



5820022 DOUBLE-SIDED PP CARPET TAPE WHITE 50MM X 25M

- The carpet tape 200 is made of soft PP foil with double-sided hot melt adhesive for strong bonding and excellent ageing resistance. The silicone coated liner removes easily before application.
- Weight: 0.23 kg



580813##### INSULATING TAPE SET 0.13 X 19 MM X 20 M

- Flame retardant and self extinguishing - safe to use on electrical cables Wide range of colours - suitable for colour coding.
- UV-resistant
 - Width: 15 mm
 - Length: 10 m

Art. No.	Colours
580813RNB10	10
580813RNB5	5



58170## PAPER MASKING TAPE YELLOW 50 M

- The type 170 tape is a tough and tearproof impregnated crepe paper backed with soft cross-linked natural rubber adhesive for pressure-sensitive application and ageing resistance.
- Weight: 0.01 kg.

Art. No.	Width
5817019	19 mm
5817025	25 mm
5817050	50 mm



5821022 CLOTH CARPET TAPE DOUBLE SIDED ADHESIVE WHITE

- The carpet tape 210 is made of tearproof cotton cloth with double-sided hot melt adhesive for aggressive bonding and excellent shearing resistance. The silicone coated liner removes easily before application.
- Weight: 0.37 kg.



58065N### GAFFER TAPE NEON

- Carrier: PE-coated cloth
- Length: 25 m
- Width: 38 mm
- Adhesive-base: rubber
- Temperature-resistance: - 35 °C up to + 80 °C
- Good weather-resistance
- Weight: 0.37 kg

Art. No.	Colour
58065NGRN	Green
58065NPIN	Pink
58065NYEL	Yellow
58065NOR	Orange



5804 ANTI-SLIP ADHESIVE TAPE

- Anti-Slip Adhesive Tape, black/yellow striped
- 50 mm x 18 m
 - Anti slip surface
 - Acrylic adhesive - bond improves with age
 - Easy to release paper liner
 - For indoor and outdoor applications
 - Oil resistant
 - UV resistant
 - Water resistant.
 - Weight: 1.08 kg

ADVANCE



5808##### PVC INSULATING TAPE

- PVC Electrical Insulation Tape. Conforms to BS EN 60454 Type 2. 19 mm x 33 m. Flame retardant and self extinguishing - safe to use on electrical cables. Wide range of colours - suitable for colour coding.
- UV resistant.
 - Weight: 0.11 kg.

Art. No.	Colour
5808BLK	Black
5808GREY	Grey
5808BLU	Blue
5808GRN	Green
5808VIOLETT	Violett
5808RED	Red
5808OR	Orange
5808BRW	Brown
5808YEL	Yellow
5808W	White



58064N### GAFFER TAPE NEON

- Carrier: PE-coated cloth
- Length: 25 m
- Width: 19 mm
- Adhesive-base: rubber
- Temperature-resistance: - 35 °C up to + 80 °C
- Good weather-resistance
- Weight: 0.19 kg

Art. No.	Colour
58064NGRN	Green
58064NPIN	Pink
58064NYEL	Yellow
58064NOR	Orange

TAPES



5821550
CLOTH CARPET TAPE PLASTICISER
RESISTANT DOUBLE SIDED ADHESIVE
TRANSPARENT 50MM X 25M

The type 295 tape is made of fibre matting with aggressive double-sided hot melt adhesive providing high shearing resistance. The adhesive is not plasticiser-resistant.

- Weight: 0.44 kg



5862025
PHOSPHORTAPE 25 MM X 10 M

The photoluminescent tape 620 is a double-layer vinyl film with pressure sensitive acrylic adhesive backed by a poly-coated layflat release liner. After charging with artificial or natural light, the tape will glow for 30 minutes with maximum brightness and remain visible for up to 10 hours in the dark.

- Weight: 0.16 kg



5804
ANTI-SLIP ADHESIVE TAPE

The anti-slip tape 530 is made of aluminium oxide coated PVC with acrylic adhesive. It is heat, water and UV resistant and can be used indoors and outdoors. The tape is available in yellow/black, yellow/fluorescent, plain black and transparent.

- Weight: 0.83 kg

Art. No.	Colour
5853050S	Black
5853050TR	Transparent
5853050SG	Black/yellow
5853050PH	Phosphor



5868615S#
TUNNEL TAPE 150 MM X 15M

The type 686 is an extra wide cloth-backed safety tape (150 mm) with 80 mm adhesive-free tunnel-like center to safely hide cables and wiring. It can conveniently be torn by hand and removes from most surfaces without leaving adhesive residue. With this tape, cables and cords no longer need to be cleaned from sticky residue.

- Weight: 1.00 kg.

Art. No.	Colour
5868615S	Black
5868615SG	Black / yellow



5803E
SAFETY TAPE BLACK/YELLOW
50 MM X 33 M

Very high adhesion level - adheres well long term to rough surfaces. Low stretch - will not lift once applied. Good abrasion resistance - stands up well to foot and machinery traffic. Can be walked on immediately after application.

Regulation colours should be used for marking hazards.

- Width: 50 mm
- Length: 33 m
- Weight: 0.39 kg



58033E
SAFETY TAPE BLACK/YELLOW
100 MM X 33 M

Durable, plasticized PVC foil coated with white, extremely sticky, pressure-sensitive adhesive.

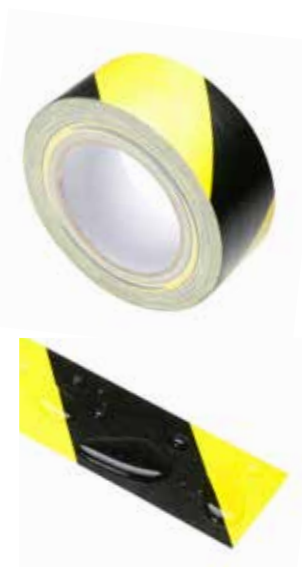
- Width: 100 mm
- Length: 33 m
- Weight: 0.77 kg



58064###
GAFFER TAPES RED 19MM X 25 M

- Type: Gaffa
- Width: 19 mm
- Length: 25 m
- Weight: 0.01 kg

Art. No.	Colour
58064BLK	Black
58064W	White
58064BLU	Blue
58064LTBLU	Light blue
58064GRN	Green
58064RED	Red
58064VIO	Violet



5865050
CLOTH-WARNING-TAPE
BLACK/YELLOW 50 MM X 25 M

The striped hazard tape 650 is a hard wearing polyethylene-coated cloth tape with excellent instant adhesion. The high quality tape is tearproof and waterproof.

- Weight: 0.52 kg



5866950S
TEXTILE TAPE BLACK
50 MM X 50 M

The tearproof textile tape 669 is made of rayon with a high strength natural rubber adhesive for excellent instant adhesion.

- Weight: 0.5 kg



5807#####
GAFFA 50M

Best quality super sticky cloth backed adhesive tape. Gloss finish. Cable friendly adhesive peels clean from cables and most other surfaces.

Very easy unwind and very easy tear. For joining and securing scenery in back stage areas where a gloss finish is preferred to give higher visibility in dark areas. Securing of cables and instrument leads.

- Weight: 0.69 kg

Art. No.	Colour
5807BLK	Black
5807S	Silver
5807W	White



58065###
GAFFER TAPES 38 MM X 25 M

- Type: Gaffa
- Colour: blue
- Width: 38 mm
- Length: 25 m
- Weight: 0.38 kg

Art. No.	Colour
58065BLK	Black
58065W	White
58065BLU	Blue
58065LTBLU	Light blue
58065GRN	Green
58065RED	Red
58065VIO	Violet
58065CAM	Camouflage



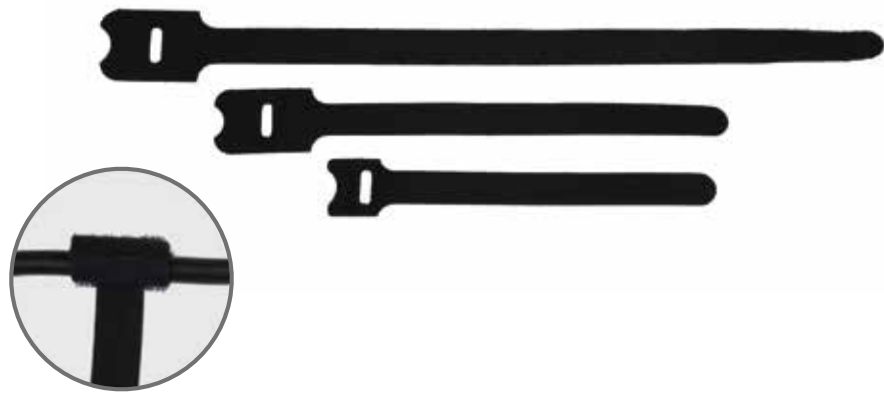
ADAM HALL STAGE EQUIPMENT ACCESSORIES - THE DEVIL IS IN THE DETAILS

We stock a miscellaneous selection of accessory items that can make a big difference to your presentation. Use our spray adhesives for stage props and cabinet covers, finish loudspeaker enclosures with our texture paint and keep cords tidy and securely attached with our cable ties. We also supply industrial grade batteries to power wireless transmitters, DI boxes etc.

ACCESSORIES

CABLE & VELCRO	74
BATTERIES	75
GLUE & PAINT	76-77

CABLE TIES & VELCRO



VT2### CABLE TIES

Cheap, easy and fast way to tie cables.

Art. No.	Size
VT2215	22 / 12.5 x 150 mm
VT2520	25 / 12.5 x 200 mm
VT2830	28 / 14.0 x 306 mm

VR#### CABLE TIES HOOK & LOOP

Black, with coloured tongue. Available in black, blue, red, green and yellow.

Art. No.	Size
VR1616*	16 x 160 mm
VR2020*	20 x 200 mm
VR2030*	20 x 300 mm
VR2530*	25 x 300 mm
VR4040*	40 x 400 mm
VR5050*	50 x 500 mm
VR5080*	50 x 800 mm

*BLK - Black
*BLU - Blue
*GRN - Green
*RED - Red
*YEL - Yellow

**CUSTOMISABLE
WITH YOUR LOGO!**



VP##### VP CABLE TIES

In clear or black.

Art. No.	Size
VP26135BLK	26 x 135 mm
VP36200(BLK)	36 x 200 mm
VP36290(BLK)	36 x 290 mm
VP48360(BLK)	48 x 360 mm



BATTERIES

VIMN#### DURACELL PROCELL

Art. No.	Size	PU	Weight
VIMN2025	3 V Battery CR 2025	10 pcs.	0.01 kg
VIMN2032	3 V Battery CR 2032	10 pcs.	0.003 kg
VIMN4003	1.5V Micro AAA	10 pcs.	0.01 kg
VIMN4006	1.5V Mignon AA	40 pcs.	0.02 kg
VIMN4014	1.5V BABY C	20 pcs.	0.06 kg
VIMN4020	1.5V Mono D	20 pcs.	0.13 kg
VIMN4022	9 V Block	20 pcs.	0.05 kg



BATTERYBOXSMALL BATTERY STORAGE BOX FOR 4 BATTERIES

Practical battery box - ideal for storing or transporting your batteries! That way they are in one place and protected in package that is also ideal for travel.

- Weight: 0.20 kg.
- Fits Micro AAA and Mignon AA sizes.
- Dimensions: 55 x 17 x 62 mm

Batteries not included.



BATTERYBOXBIG BATTERY STORAGE BOX FOR UP TO 8 BATTERIES

Storage box for up to 8 batteries in the sizes Micro AAA, Mignon AA, CR 123, and memory cards. Freely expandable, with hanger.

- Weight: 0.40 kg.
- Dimensions: 55 x 21 x 160 mm.

Batteries not included.



GLUE & PAINT



0131### TEXTURE PAINT 1 KG

Warnex texture paint is the impressive alternative to conventional textile and plastic surfaces! Whether coarse or fine grain finished, the range of sound from your loudspeaker cabinets remains unchanged. For optimal results use a Spray Gun with pressure cup.

- Semi matte.
- Economical air drying
- Environmentally-friendly water thinning
- Easy application as a 1-component material

Art. No.	Colour	Size
0131	Black	1 kg
0131WHI	White	1 kg
013112	Black	12 kg



01360 SPRAY ADHESIVE 500 ML CAN

The simple and fast adhesive from a spraycan for large-scale surfaces. It bonds many types of materials. Specially designed for long-lasting, extra strong bonding of rough and uneven surfaces such as paper, cardboard, felt, fabric, plasticizer-free plasticfoils, foams, padding, rigid foams with each other and itself; as well as onto wood, glass, metal, ceramics (ideal for making cases and boxes).

The amount of adhesive can be adjusted (high/medium/low) by a special valve. Depending on the material, an area of up to 4 m² can be bonded together.

- Temperature resistant from -20°C to +60°C
- Weight: 0.50 kg



GLUE & PAINT

01362 SPRAY ADHESIVE 4 KG CONTAINER

The Spray adhesive is a universal contact adhesive for bonding upholstery foam on itself, on upholstery fabrics, leather, wood, hard fibre, paperboard, rubberized hair, fleece, polystyrene foam and other plasticizer free upholstery material.

This contact adhesive applicable by spray characterised by a long contact life and good heat resistance. The adhesive produces an elastic and durable joint. Fits perfectly together with the Spray Air Gun. (Article No. 01362AG).

- Weight: 4.40 kg



013631L SOLVENT FOR 01362 SPRAY ADHESIVE 1 L

Thinner for our Spray Adhesive 01362. Also to be used as a cleaner for your working utensils.

- Weight: 1.20 kg

58141 EZEWIPE GORILLA WIPES - CLEANING CLOTHS

Gorilla Wipes Cleaning cloths. 80 cloths/pack. Especially designed for the purpose, these cloths remove even the most troublesome adhesive residue.

- Weight: 0.70 kg





ADAM HALL 19" RACK COMPONENTS – CONFIGURE YOUR CUSTOM RACK

Featuring cradles, drawers and trays the Adam Hall line of 19" components provides numerous options for custom rack configuration. Blanking panels, ventilation panels and pre-punched connector panels extend functionality and structural stability while our rack lights add illumination. Mounting is made easy with our selection of cage nuts, screws and washers.

19" EQUIPMENT

MOUNTING PARTS	80
19" PANELS	81-83
CRADLES & HOUSINGS	84
19" DRAWERS	85-86
MISCELLANEOUS	87
RACK LIGHTS	88-89

MOUNTING PARTS

592#### RACK MOUNTING KIT

M6 x 12 screws, nuts and cupwashers.
For two 19"-units in a blisterpack.

▪ Weight: 0.07 kg

Art. No. **Type**

5924BLP Hexnuts

5925BLP Square nuts

565# CAGENUTS M6

Art. No. **t**

5650 3.5 mm

5651 1.5 mm

5652 3.0 mm

5653 2.0 mm

541# SCREWS

Art. No. **Type**

5417(BLK) M6 x 12

5410(BLK) M6 x 16

5416(BLK) M6 x 20

5414(BLK) M6 x 40

5420BLK M3 x 10 with nut

566# RACK NUTS M6

Art. No. **Type**

5666 Hexnut

5660 Square nut

5620 CUPWASHER FOR M6 SCREW

- Recessed
- Black plastic
- External diameter: 15 mm
- Hole size: 6.8 mm
- Height: 4.1 mm

5621 FLAT WASHER FOR M6 SCREW

- Black plastic
- External diameter: 12 mm
- Internal diameter: 6.5 mm
- Thickness: 1.6 mm



5635 HUMFREES UNIVERSAL SYSTEM

HUM & NOISE IN RACK SYSTEMS ...

Usual mounting of 19" equipment in a rack system results in contact between the devices through the rack rails. This creates ground loops – the most common cause of hum and noise.

The unique Humfrees mounting system interrupts these groundloops by isolating the 19" units from the rails and from each other. Scarring and scratching of the front panel by the mounting screws is also eliminated.

Set for one unit.

▪ Weight: 0.03 kg



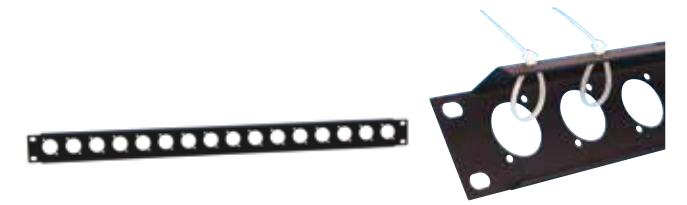
19" PANELS



872215 19" U-SHAPED RACK PANEL 12 SOCKETS 1U WITH TIE BAR

1 U rack panel with punched holes for 12 universal „D“ type XLR sockets. Integrated tie bar including 12 cable ties.

- 1.5 mm steel, black powder coated
- Weight 0.38 kg



872225 19" U-SHAPED RACK PANEL 16 SOCKETS 1U WITH TIE BAR

1 U rack panel with punched holes for 16 universal „D“ type XLR sockets. Integrated tie bar including 16 cable ties.

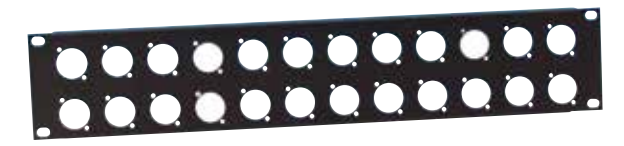
- 1.5 mm steel, black powder coated
- Weight 0.38 kg



872213 19" U-SHAPED RACK PANEL 12 SOCKETS 1U

1 U rack panel with punched holes for 12 universal „D“ type XLR sockets. 2 mm steel, black powder coated,

- Weight 0.25 kg



872214 19" U-SHAPED RACK PANEL 24 SOCKETS 2U

2 U rack panel with punched holes for 24 universal „D“ type XLR sockets. 2 mm steel, black powder coated.

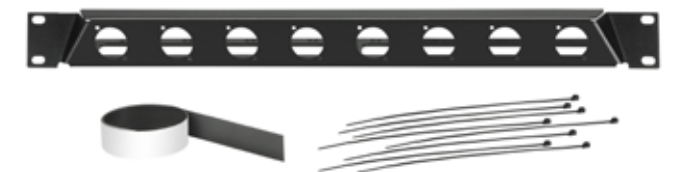
- Weight 0.40 kg



872212 19" U-SHAPED RACK PANEL UNIVERSAL 1U

1 U rack panel with punched holes for 2 x female XLR, 6 x male XLR and 1 x IECC mains socket. Steel, black powder coated

- Weight 0.28 kg



872230 19" ANGLED RACK PANEL FOR 8 X D-TYPE SOCKETS

The mounting holes are fitted with M3 threads; the tilt angle is 30°. The front overhead surface is intended for labels - a magnetic labelling strip is included.

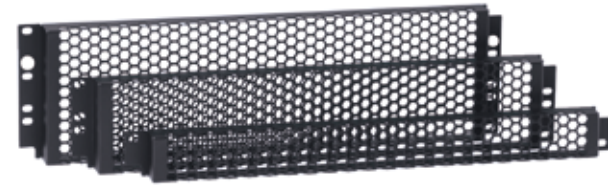
- Thickness: 2 mm
- In Addition: Incl. magnetic labelling strip, 8 x cable ties

19" PANELS



7839 BLANKING PLATE

Universal XLR blanking plate for „D“-type cutouts, black plastic.



8744# 19" COVER WITH PUNCHED HOLE FRONT, COARSE

For protecting settings on effects units, etc. Black powder coated.

- Inside depth 25 mm

Art. No.	U	Weight
87445	1	0.32 kg
87446	2	0.13 kg
87447	3	0.53 kg



8744#VR 19" COVER WITH PUNCHED HOLE FRONT, FINE

For protecting settings on effects units, etc. Black powder coated.

- Inside depth 28 mm

Art. No.	U	Weight
87446VR	2	0.41 kg
87447VR	3	0.60 kg



8744# 19" COVER WITH PLEXIGLASS FRONT

For protecting settings on effects units, etc.

- Inside depth 28 mm

Art. No.	U	Weight
87441	1	0.33 kg
87442	2	0.41 kg



87221V 19" U-SHAPED VENTILATION PANEL 1U WITH VERTICAL SLOTS

- 1 U, with vertical slots
- Ventilation area 30 cm²
- 1.5 mm Steel, black powder coated
- Weight 0.29 kg



8722#VR 19" U-SHAPED VENTILATION PANEL WITH ROUND HOLES

- U-Shaped Ventilation Panel with round holes
- 1.5 mm Steel, black powder coated

Art. No.	U	Ventilation area	Weight
87221VR	1	88 cm ²	0.25 kg
87222VR	2	210 cm ²	0.36 kg
87223VR	3	320 cm ²	0.47 kg



8722#VH 19" U-SHAPED VENTILATION PANEL WITH HORIZONTAL SLOTS

- U-Shaped Ventilation Panel with horizontal slots
- 1.5 mm Steel, black powder coated

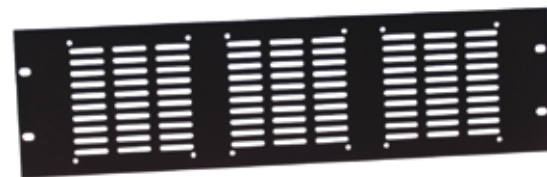
Art. No.	U	Ventilation area	Weight
87221VH	1	38 cm ²	0.28 kg
87222VH	2	89 cm ²	0.57 kg



872# 19" FLAT RACK PANEL ALUMINIUM

- 3 mm Aluminium or 1.5 mm Steel, black powder coated

Art. No.	U	Weight
8721(STL)	1	0.18 (0.34) kg
8722(STL)	2	0.36 (0.67) kg
8723(STL)	3	0.54 (1.04) kg
8724(STL)	4	0.72 (1.33) kg



876# 19" RACK PANEL FOR AXIAL FANS

3 U high for mounting up to 3 axial fans.

- 1.5 mm steel black powder coated

Art. No.	Fans	Weight
8763	2	0.84 kg
8764	1	0.90 kg
8765	3	0.82 kg



8721V 19" FLAT VENTILATION PANEL 1U WITH VERTICAL SLOTS

- 1 U, with vertical slots.
- Ventilation area 30 cm²
- 1.5 mm Steel, black powder coated
- Weight 0.28 kg



8722# 19" U-SHAPED RACK PANEL ALUMINIUM

- 2 mm aluminium or 1.5 mm steel, black powder coated

Art. No.	U	Weight
872205STL	1/2	0.17 kg
87221(STL)	1	0.20 (0.32) kg
87222(STL)	2	0.35 (0.58) kg
87223(STL)	3	0.40 (0.80) kg
87224(STL)	4	0.54 (1.06) kg

19" PANELS

CRADLES & HOUSINGS



875# 19" RACK CRADLE

For mounting of non 19" equipment. The extensive mounting hole pattern in the base greatly reduces the need for drilling.

- 1.5 mm Steel, black powder coated
- Depth 250 mm

Art. No.	U	Weight
8754	1	2.00 kg
8755	2	4.00 kg



8756 19" RACK CRADLE

19" Rack Cradle for top mounting in open top rack. Supplied with self-adhesive Velcro to enable small mixers, effects, etc., to be mounted.

- 1.5 mm Steel, black powder coated.
- Depth 38 cm
- Height 2 U
- Weight 0.80 kg



8755# 19" RACK CRADLE EXTRA DEEP

For mounting of non 19" equipment with a depth of up to 375 mm. Rear edge is folded up 10 mm for extra stability. Ventilation slots on both sides.

- 1.6 mm steel, black powder coated

Art. No.	U	Weight
87551	1	2.30 kg
87552	2	2.60 kg
87553	3	2.90 kg



875# 19" RACK CLAMP

For mounting of non 19" equipment. With strong, adjustable clamping steel bars. 1.2 mm Steel, black powder coated.

- Depth: 300 mm

Art. No.	U	Weight
8757	1	2.58 kg
8758	2	2.89 kg
8759	3	3.20 kg

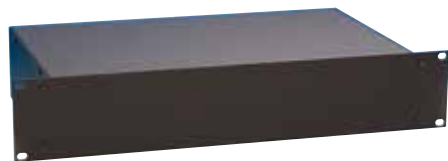


8740#V 19" HOUSING WITH VENTILATION SLOTS

With ventilation slots in top panel, 1.2 mm Steel. Front panel 3 mm Aluminium, black powder coated. Flat-packed with screws.

- Depth: 250 mm

Art. No.	U	Weight
87407V	1	2.25 kg
87408V	2	2.85 kg
87409V	3	3.45 kg



8740# 19" HOUSING

1.2 mm Steel. Front panel 3 mm Aluminium, black powder coated. Flat-packed with screws.

- Depth: 250 mm

Art. No.	U	Weight
87407	1	2.25 kg
87408	2	2.85 kg
87409	3	3.45 kg



8740# LOCKABLE 19" RACKMOUNTING DRAWER MODULE

Lockable 19" rackmounting drawer module. Full extension ball race drawer slide. 1.2 mm steel, black powder coated. Incl. 2 keys. Also available in Aluminium.

Art. No.	U	Depth Outer / Inner	Width Outer / Inner	Height Outer / Inner
87402(A)	1	392 / 383	434 / 401	90 / 74
87403(A)	2	392 / 383	434 / 401	135 / 125
87404(A)	3	392 / 383	434 / 401	180 / 175



8740#E 19" ECONOMY RACKMOUNTING DRAWER MODULE

19" economy rackmounting drawer module. 2/3 extension ball race drawer slides. 1.2 mm steel, black powder coated.

Art. No.	U	Depth Outer / Inner	Width Outer / Inner	Height Outer / Inner
87401E	1	390 / 382	436 / 405	44 / 37
87402E	2	392 / 377	436 / 405	90 / 75
87403E	3	392 / 377	436 / 405	135 / 115



87402T UNIVERSAL PARTITIONING FOR RACK DRAWERS

Universal Partitioning for Rack Drawers 2 U or higher, or any drawer (office, etc.) with a minimum internal height of 70 mm. Black Plastic, supplied in 50cm lengths with click joiners at each end.

Can be easily cut to the required length

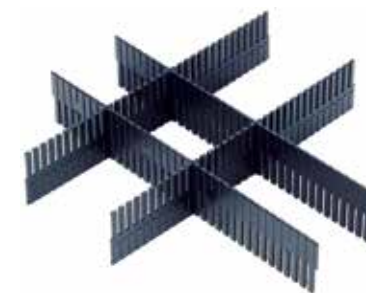
- Weight 0.12 kg



87406 19" 6 U RACK DRAWER

Inner tray mounted on fully extendable ball race drawer slides. The drawer is removable. 2.0 mm Steel, black powder coated. Microphone insert not included.

- Weight 13.95 kg



87402P# PARTITIONING FOR ADAM HALL RACK DRAWER

2 U or higher. P1 fits across the width of the drawer, P2 fits along the depth. Use as many as required to create further compartments.

Art. No.	Type	Weight
87402P1	For Width	0.10 kg
87402P2	For Length	0.10 kg

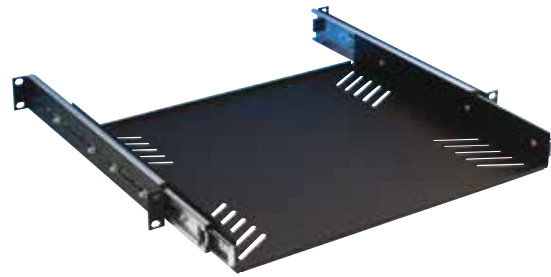


87406MI FOAM MICROPHONE INSERT

Foam microphone insert for use with 87406 drawer.

- Holds up to 25 microphones
- Cross Section Dimension: 56 mm
- Weight 0.44 kg

19" DRAWERS



87556
19" RACKMOUNT PULL-OUT TRAY

1 U, Drawer with slides mounted on both sides. The rack brackets on the front and back are extendable, allowing the unit to be fitted with rear support to racks of varying depths.

- Usable surface 412 mm wide x 380 mm deep
- 1.6 mm steel, black powder coated.
- Weight 5.50 kg



87555
19" RACK-CRADLE

2 U, with pull out shelf on drawer slides with a depth of 358 mm. 1.6 mm steel, black powder coated.

- Weight 5.00 kg



8730#
19" RACKBOX

Steel, black powder coated with black plastic latch. Lid opens downwards.

- Depth 20 cm.

Art. No.	U	Weight
87302	2	4.25 kg
87303	3	5.05 kg



Keyboard not included

87412
19" COMPUTER KEYBOARD TRAY

2U, 19" rackmount for keyboards (tray dimensions 435 x 235 x 70 mm). Includes self adhesive strips to hold keyboard in position.

- Cable access at rear of tray
- Steel, black powder coated
- Depth 36 cm
- Weight 5.70 kg



Monitor not included

87413
19" RACK MOUNT PULL-OUT TRAY

19" Rack mount pull-out tray with folding mounting bracket (VESA 75 mm and 100 mm) for computer screens with a maximum width 435 mm. Velcro straps hold screen securely in place during transport.

- Steel, black powder coated
- Weight 9.00 kg



CDs not included

874331
19" CD SHELF

- 3 U, steel, black powder coated
- Holds 26 CD's
- Weight 1.35 kg



87INLAY
INLAY - NONSLIP DRAWER LINER

Prevents sliding and scratching
For rack drawers, shelves etc.
Dimensions 400 x 370 mm
Perfect for all Adam Hall rack drawers (item nos. 87402, 87402 A, 87403, 87403 A, 87404, 87404 A, 87401E, 87402E, 87403E)

- Weight 0.75 kg



87475
19" HOUSING FOR FUSE SWITCHES

3 U, two part, steel black powder coated

- Weight 1.20 kg
- Cutout 430 x 46 mm

87475A Rear protection box (not depicted above).



SCS19
WALL MOUNT CABLE HOLDER

- Steel material
- 2 mm thickness
- 19 cut outs for cables with diameter from 4 mm - 11 mm
- Dimensions (W x D x H): 318 x 65 x 55 mm



87530
HEADPHONE BRACKET

Mounts over 2 units rack height, swivels flat against rack for transport or can be removed entirely. Also useful for patch cords, etc.

- Steel, black powder coated with soft PVC covering.
- Arm length: 14 cm
- Weight 0.16 kg

MISCELLANEOUS



8722#BRUSH
19" FRONT COVER BRUSH STRIP

To pass through connectors and cables.

Art. No.	U	Opening	Weight
87221BRUSH	1	400 x 21 mm	0.31 kg
87222BRUSH	2	400 x 56 mm	0.43 kg



RACK LIGHTS



87463ULTRAC DUAL GOOSENECK RGB AND WHITE COB LED RACK LIGHT

The 87463 Ultra C is a single space rack light with selectable colors and selection memory. The dual gooseneck lamps are equipped with COB LEDs providing red, green or blue plus cold or warm white illumination and flexible positioning. The 87463 Ultra C is designed for both front or rear mounting and comes with a 12 volt DC power adapter.

- Weight: 0.41 kg



87463ULTRA GOOSENECK COLD WHITE COB LED RACK LIGHT

The 87463 Ultra is a single space dimmable rack light with level memory. The dual gooseneck lamps are equipped with cold white COB LEDs providing 3 levels of illumination and flexible positioning. The 87463 Ultra is designed for both front or rear mounting and comes with a 12 volt DC power adapter.

- Weight: 0.41 kg



87463 LED GOOSENECK RACKLIGHT - 2 GOOSENECKS

- 9" 1 U Dual Gooseneck LED Rack Light
- Dimmer control
- Blue / white switchable
- 4 white and 2 blue LEDs
- Miniature external power supply (12 V)
- Weight: 0.89 kg

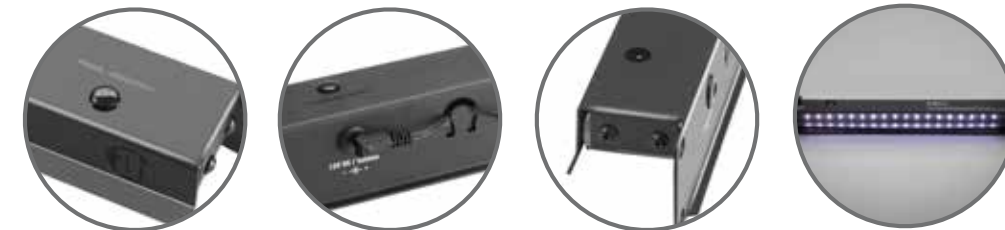
RACK LIGHTS



87451PRO LED ARRAY RACK LIGHT WHITE 1 U

This rack light meets the highest professional standards! Equipped with 18 ultra bright LEDs, arranged in an array, this rack light ensures a uniform light distribution over the entire width of the rack. Switching on and off is done via "push-and-hold" on a button. Also, 3 brightness levels can be adjusted with the same button.

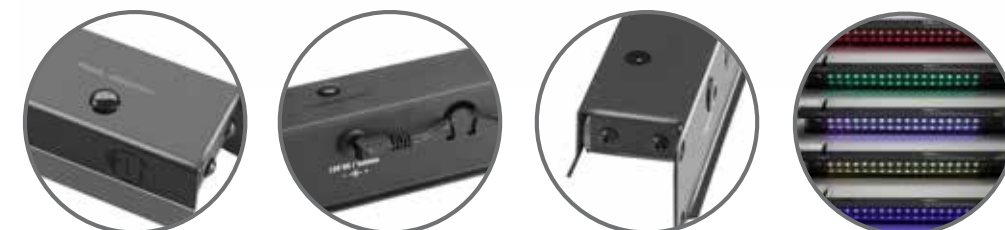
- Weight: 0.98 kg



87451PROC LED ARRAY RACK LIGHT MULTI- COLOR 1 U

This rack light meets the highest professional standards! Equipped with 18 ultra bright LEDs, arranged in an array, this rack light ensures a uniform light distribution over the entire width of the rack. Switching on and off is done via "push-and-hold" on a button. Also, 3 brightness levels can be adjusted with the same button.

- Weight: 0.98 kg



874571### 19" RACKLIGHT "COOL LIGHT"

Uses LED's and Fiberoptic technology to provide subtle rack lighting in several colours.

- 5V adapter included
- Weight 0.42 kg

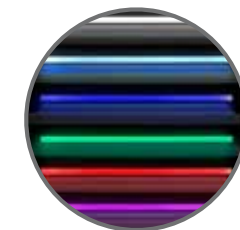
Art. No. Colour

874571WHI Satin white

874571CHM Multi colour



874571WHI



874571CHM



RACK LIGHTS



SLED1ULTRA### GOOSENECK LIGHT

The SLED 1 ULTRA is a matt black gooseneck light with 4 extra bright white COB LEDs and 3-pin male XLR plug that works on dedicated 12 volt to 48 volt DC. The 300 mm gooseneck is easily flexible yet stays put where you bend it, the power switch is conveniently located on top of the lamp. Weight 0.08 kg.

Model name:	SLED1ULTRABNC	SLED1ULTRAUSB	SLED1ULTRAXLR3	SLED1ULTRAXLR3A	SLED1ULTRAXLR4	SLED1ULTRAXLR4A
Product type:	Gooseneck Lamp	Gooseneck Lamp	Gooseneck Lamp	Gooseneck Lamp	Gooseneck Lamp	Gooseneck Lamp
Number of LEDs	4	4	4	4	4	4
Colour of LEDs	white	white	white	white	white	white
Gooseneck length	300 mm	300 mm	300 mm	400 mm	300 mm	400 mm
Switches	yes	yes	yes	yes	yes	yes
Colour temperature	6000 to 6500 K	6000 to 6500 K	6000 to 6500 K	6000 to 6500K	6000 to 6500 K	6000 to 6500K
Power Supply	via BNC connector	via USB connector	via 3-pin XLR connector	via angled 3-pin XLR connector	via 4-pin XLR connector	via angled 4-pin XLR connector
Weight	0.08 kg	0.08 kg	0.08 kg	0.09 kg	0.08 kg	0.09 kg
Additional information	4 extra bright COB LEDs	4 extra bright COB LEDs	4 extra bright COB LEDs	4 extra bright COB LEDs	4 extra bright COB LEDs	4 extra bright COB LEDs

RACK LIGHTS



SLED1BXL3 SURFACE MOUNT 3-PIN XLR GOOSENECK LIGHT BASE WITH POWER ADAPTER

Made of hard-wearing black plastic with a steel mounting plate the SLED 1 B XLR 3 is a gooseneck light base for lamps with a 3-pin male XLR connector. Pins 1 and 3 are wired to ground, pin 2 supplies +12 volts. The base comes with a 500mA 12 volt DC power adapter.

▪ Weight: 0.12 kg



SLED1BULTRA GOOSENECK LIGHT WITH SUR- FACE MOUNT BASE

Featuring 4 extra bright white COB LEDs, a colour temperature of 6,500 K and convenient power switch the SLED 1 B ULTRA is a 30 cm gooseneck light with rugged surface mount base of black plastic and steel. The lamp includes a 500mA 12 volt DC power adapter.

REGISTER

Article no.	Model name	Description	Page
0131	0131	Texture Paint black 1 kg	76
013112	013112	Texture Paint black 12 kg	76
0131WHI	0131 WHI	Texture Paint white 1 kg	76
01360	01360	Spray Adhesive 500 ml Can	76
01362	01362	Spray Adhesive 4 kg Container	77
013631L	01363 1 L	Solvent for 01362 Spray Adhesive 1 kg Container	77
0150	0150	Blackout Cloth B1 black 300g/m ² , 300 cm wide	42
0150WH	0151 WH	Blackout Cloth B1 black 300g/m ² , 300 cm wide	42
0151B	0151 B	Deco Molton B1 black 160g/m ² , 300 cm wide	42
0151WH	0151 WH	Deco Molton B1 white 160g/m ² , 300 cm wide	42
0151X33	0151 X 33	DECO- cloth B1 with burnished Grommets hemmed 3 x 3m black	43
0151X33WH	0151 X 33 WH	DECO- cloth B1 with burnished Grommets hemmed 3 x 3m white	43
0151X34	0151 X 34	DECO- cloth B1 with burnished Grommets hemmed 3 x 4m black	43
0151X34WH	0151 X 34 WH	DECO- cloth B1 with burnished Grommets hemmed 3 x 4m white	43
0151X35	0151 X 35	DECO- cloth B1 with burnished Grommets hemmed 3 x 5m black	43
0151X35WH	0151 X 35 WH	DECO- cloth B1 with burnished Grommets hemmed 3 x 5m white	43
0151X36	0151 X 36	DECO- cloth B1 with burnished Grommets hemmed 3 x 6m black	43
0151X36WH	0151 X 36 WH	DECO- cloth B1 with burnished Grommets hemmed 3 x 6m white	43
0151X43	0151 X 43	DECO- cloth B1 with burnished Grommets hemmed 4 x 3m black	43
0151X43WH	0151 X 43 WH	DECO- cloth B1 with burnished Grommets hemmed 4 x 3m white	43
0151X53	0151 X 33	DECO- cloth B1 with burnished Grommets hemmed 5 x 3m black	43
0151X53WH	0151 X 53 WH	DECO- cloth B1 with burnished Grommets hemmed 5 x 3m white	43
0151X63	0151 X 63	DECO- cloth B1 with burnished Grommets hemmed 6 x 3m black	43
0151X63WH	0151 X 63 WH	DECO- cloth B1 with burnished Grommets hemmed 6 x 3m white	43
0151X64	0151 X 64	DECO- cloth B1 with burnished Grommets hemmed 6 x 4m black	43
0151X64WH	0151 X 64 WH	DECO- cloth B1 with burnished Grommets hemmed 6 x 4m white	43
0151X66	0151 X 66	DECO- cloth B1 with burnished Grommets hemmed 6 x 6m black	43
0151X66WH	0151 X 66 WH	DECO- cloth B1 with burnished Grommets hemmed 6 x 6m white	43
0152X33	0152 X 33	Blackout cloth B1 with nickel plated Grommets hemmed 3 x 3 m	43
0152X33WH	0152 X 33 WH	Blackout cloth B1 white with nickel plated Grommets hemmed 3 x 3 m	43
0152X36	0152 X 36	Blackout cloth B1 with nickel plated Grommets hemmed 3 x 6 m	43
0152X36WH	0152 X 36 WH	Blackout cloth B1 white with nickel plated Grommets hemmed 3 x 6 m	43
0152X43	0152 X 43	Blackout cloth B1 with nickel plated Grommets hemmed 4 x 3 m	43
0152X43WH	0152 X 43 WH	Blackout cloth B1 white with nickel plated Grommets hemmed 4 x 3 m	43
0152X53	0152 X 53	Blackout cloth B1 with nickel plated Grommets hemmed 5 x 3 m	43
0152X53WH	0152 X 53 WH	Blackout cloth B1 white with nickel plated Grommets hemmed 5 x 3 m	43
0152X63	0152 X 63	Blackout cloth B1 with nickel plated Grommets hemmed 6 x 3 m	43
0152X63WH	0152 X 63 WH	Blackout cloth B1 white with nickel plated Grommets hemmed 6 x 3 m	43
0152X64	0152 X 64	Blackout cloth B1 with nickel plated Grommets hemmed 6 x 4 m	43
0152X64WH	0152 X 64 WH	Blackout cloth B1 white with nickel plated Grommets hemmed 6 x 4 m	43
0152X93	0152 X 93	Blackout cloth B1 with nickel plated Grommets hemmed 9 x 3 m	43
0152X93WH	0152 X 93 WH	Blackout cloth B1 white with nickel plated Grommets hemmed 9 x 3 m	43
0152X96	0152 X 96	Blackout cloth B1 with nickel plated Grommets hemmed 9 x 6 m	43
0152X96WH	0152 X 96 WH	Blackout cloth B1 white with nickel plated Grommets hemmed 9 x 6 m	43
0153X204	0153 X 204	Blackout cloth B1 with Velcro 2 x 0,4 m	19
0153X206	0153 X 206	Blackout cloth B1 with Velcro 2 x 0,6 m	19
0153X208	0153 X 208	Blackout cloth B1 with Velcro 2 x 0,8 m	19
0153X210	0153 X 210	Blackout cloth B1 with Velcro 2 x 1 m	19
0153X211	0153 X 211	Blackout cloth B1 with Velcro 2 x 1,1 m	19
0155100B	0155100 B	Gauze, material 100 sold by the meter, 3m wide, black	39
0155100W	0155100 W	Gauze, material 100 sold by the meter, 3m wide, white	39
0155X34B	0155 X 34 B	Gauze, material 100 3x4m with eyelets, black	39
0155X34W	0155 X 34 W	Gauze, material 100 3x4m with eyelets, white	39
0155X35B	0155 X 35 B	Gauze, material 100 3x5m with eyelets, black	39
0155X35W	0155 X 35 W	Gauze, material 100 3x5m with eyelets, white	39
0155X36B	0155 X 36 B	Gauze, material 100 3x6m with eyelets, black	39
0155X36W	0155 X 36 W	Gauze, material 100 3x6m with eyelets, white	39
0155X45B	0155 X 45 B	Gauze, material 100 4x5m with eyelets, black	39
0155X45W	0155 X 45 W	Gauze, material 100 4x5m with eyelets, white	39
0155X46B	0155 X 46 B	Gauze, material 100 4x6m with eyelets, black	39
0155X46W	0155 X 46 W	Gauze, material 100 4x6m with eyelets, white	39
0155X56B	0155 X 56 B	Gauze, material 100 5x6m with eyelets, black	39
0155X56W	0155 X 56 W	Gauze, material 100 5x6m with eyelets, white	39
0156100B	0156100 B	Gauze, material 201 sold by the meter, 3m wide, black	39
0156100W	0156100 W	Gauze, material 201 sold by the meter, 3m wide, white	39
0156X34B	0156 X 34 B	Gauze, material 201 3x4m with eyelets, black	39
0156X34W	0156 X 34 W	Gauze, material 201 3x4m with eyelets, white	39
0156X35B	0156 X 35 B	Gauze, material 201 3x5m with eyelets, black	39
0156X35W	0156 X 35 W	Gauze, material 201 3x5m with eyelets, white	39
0156X36B	0156 X 36 B	Gauze, material 201 3x6m with eyelets, black	39
0156X36W	0156 X 36 W	Gauze, material 201 3x6m with eyelets, white	39
0156X45B	0156 X 45 B	Gauze, material 201 4x5m with eyelets, black	39
0156X45W	0156 X 45 W	Gauze, material 201 4x5m with eyelets, white	39
0156X46B	0156 X 46 B	Gauze, material 201 4x6m with eyelets, black	39
0156X46W	0156 X 46 W	Gauze, material 201 4x6m with eyelets, white	39
0156X56B	0156 X 56 B	Gauze, material 201 5x6m with eyelets, black	39
0156X56W	0156 X 56 W	Gauze, material 201 5x6m with eyelets, white	39
0157100B	0157100 B	Gauze, material 202 sold by the meter, 3m wide, black	39
0157100W	0157100 W	Gauze, material 202 sold by the meter, 3m wide, white	39
0157X34B	0157 X 34 B	Gauze, material 202 3x4m with eyelets, black	39
0157X34W	0157 X 34 W	Gauze, material 202 3x4m with eyelets, white	39

REGISTER

Article no.	Model name	Description	Page
0157X35B	0157 X 35 B	Gauze, material 202 3x5m with eyelets, black	39
0157X35W	0157 X 35 W	Gauze, material 202 3x5m with eyelets, white	39
0157X36B	0157 X 36 B	Gauze, material 202 3x6m with eyelets, black	39
0157X36W	0157 X 36 W	Gauze, material 202 3x6m with eyelets, white	39
0157X45B	0157 X 45 B	Gauze, material 202 4x5m with eyelets, black	39
0157X45W	0157 X 45 W	Gauze, material 202 4x5m with eyelets, white	39
0157X46B	0157 X 46 B	Gauze, material 202 4x6m with eyelets, black	39
0157X46W	0157 X 46 W	Gauze, material 202 4x6m with eyelets, white	39
0157X56B	0157 X 56 W	Gauze, material 202 5x6m with eyelets, black	39
0157X56W	0157 X 56 W	Gauze, material 202 5x6m with eyelets, white	39
0158100B	0158100 B	Gauze, material 203 sold by the meter, 3m wide, black	39
015850B	015850 B	Gauze, material 203 sold by the meter, 2m wide, black	39
0158X34B	0158 X 34 B	Gauze, material 203 3x4m with eyelets, black	39
0158X34W	0158 X 34 W	Gauze, material 203 3x4m with eyelets, white	39
0158X35B	0158 X 35 B	Gauze, material 203 3x5m with eyelets, black	39
0158X35W	0158 X 35 W	Gauze, material 203 3x5m with eyelets, white	39
0158X36B	0158 X 36 B	Gauze, material 203 3x6m with eyelets, black	39
0158X36W	0158 X 36 W	Gauze, material 203 3x6m with eyelets, white	39
0158X45B	0158 X 45 B	Gauze, material 203 4x5m with eyelets, black	39
0158X45W	0158 X 45 W	Gauze, material 203 4x5m with eyelets, white	39
0158X46B	0158 X 46 B	Gauze, material 203 4x6m with eyelets, black	39
0158X46W	0158 X 46 W	Gauze, material 203 4x6m with eyelets, white	39
0158X56B	0158 X 56 B	Gauze, material 203 5x6m with eyelets, black	39
0158X56W	0158 X 56 W	Gauze, material 203 5x6m with eyelets, white	39
0159XBAU1	0159 X BAU 1	Fence Panel Gauze type 800 1.76 x 3.41 m, with eyelets, black	41
0159XBAU2	0159 X BAU 2	Fence Panel Gauze type 800 1.76 x 3.41 m, with eyelets, grey	41
0159XBAU3	0159 X BAU 3	Fence Panel Gauze type 800 1.76 x 3.41 m, with eyelets, white	41
0159XBAU4	0159 X BAU 4	Fence Panel Gauze type 800 1.76 x 3.41 m, with eyelets, green	41
0159XBAU5	0159 X BAU 5	Fence Panel Gauze type 800 1.76 x 3.41 m, with eyelets, dark blue	41
0159XBAU6	0159 X BAU 6	Fence Panel Gauze type 800 1.76 x 3.41 m, with eyelets, light blue	41
0159XBAU7	0159 X BAU 7	Fence Panel Gauze type 800 1.76 x 3.41 m, with eyelets, red	41
0159XBAU8	0159 X BAU 8	Fence Panel Gauze type 800 1.76 x 3.41 m, with eyelets, orange	41
0159XBAU9	0159 X BAU 9	Fence Panel Gauze type 800 1.76 x 3.41 m, with eyelets, yellow	41
0160B	0160 B	Acoustic-cloth B1 with nickel plated Grommets hemmed black	42
0160WH	0160 WH	Acoustic-cloth B1 with nickel plated Grommets hemmed creme	42
0160X33	0160 X 33	Acoustic-cloth B1 with burnished Grommets hemmed 3 x 3m black	44
0160X33WH	0160 X 33 WH	Acoustic-cloth B1 with burnished Grommets hemmed 3 x 3m creme	44
0160X43	0160 X 43	Acoustic-cloth B1 with burnished Grommets hemmed 4 x 3m black	44
0160X43WH	0160 X 43 WH	Acoustic-cloth B1 with burnished Grommets hemmed 4 x 3m creme	44
0160X53	0160 X 53	Acoustic-cloth B1 with burnished Grommets hemmed 5 x 3m black	44
0160X53WH	0160 X 53 WH	Acoustic-cloth B1 with burnished Grommets hemmed 5 x 3m creme	44
5410	5410	Screws M6 x 16 mm	80
5414	5414	Screws M6 x 40 mm	80
5416	5416	Screws M6 x 20 mm	80
5417	5417	Screws M6 x 11 mm	80
5620	5620	Washer recessed	80
5420BLK	5460 BLK	Washer recessed black	80
5621	5621	Washer flat	80
5635	Humfrees	Mounting Kit M6	80
5650	5650	Cage Nut M6 for 3,5 mm	80
5651	5651	Cage Nut M6 for 1,5 mm	80
5652	5652	Cage Nut M6 for 3 mm	80
5653	5653	Cage Nut M6 for 2 mm	80
5666	5666	Hexnut	80
56606	56606	Square nut	80
57041	57041	Lockable Carabiner	62
5720	5720	Cargo Restraint Track black	62
5721	5721	Cargo Restraint Track black	62
5725	5725	Flying Plate (Anchor Plate) blue-grey	62
5740A	5740 A	Double Stud Ring	62
5745	5745	Single Stud Ring	62
5803	5803	Safety Tape black/yellow 50mm x 33m	68
58033E	58033 E	Safety Tape 0.15 mm x 100 mm x 33 m yellow / black	71
5803E	5803 E	Safety Tape 0.15 mm x 50 mm x 33 m yellow / black	71
5804	5804	Anti-Slip Adhesive Tape black/yellow 50mm x 18m	68
5804	5804	Anti-Slip Adhesive Tape black/yellow 50mm x 18m	70
5805BLK	5805 BLK	Gaffa dull black 50mm x 50m	66
5805S	5805 S	Gaffa dull finish silver 50mm x 50m	66
5805W	5805 W	Gaffa dull white 50mm x 50m	66
58062BLK	58062 BLK	Gaffa black 50mm x 50m	67
58062S	58062 S	Gaffa silver 50mm x 50m	67
58062W	58062 W	Gaffa white 50mm x 50m	67
58063BLK	58063 BLK	Gaffer adhesive Premium Tape black 50mm x 50m	66
58063S	58063 S	Gaffer adhesive Premium Tape silver 50mm x 50m	66
58063W	58063 W	Gaffer adhesive Premium Tape white 50mm x 50m	66
58064BLK	58064 BLK	Gaffer Tapes Black 19mm x 50m	71
58064BLU	58064 BLU	Gaffer Tapes Blue 19mm x 25m	71
58064GRN	58064 GRN	Gaffer Tapes Green 19mm x 25m	71
58064LTBLU	58064 LTBLU	Gaffer Tapes light Blue 19mm x 25m	71
58064NGRN	58064 NGRN	Gaffer Tapes Neon Green 19mm x 25m	68
58064NOR	58064 NOR	Gaffer Tapes Neon Orange 19mm x 25m	68

REGISTER

Article no.	Model name	Description	Page
58064NPIN	58064 NPIN	Gaffer Tapes Neon Pink 19mm x 25m	68
58064NYEL	58064 NYEL	Gaffer Tapes Neon Yellow 19mm x 25m	68
58064RED	58064 RED	Gaffer Tapes Red 19mm x 25m	71
58064VIO	58064 VIO	Gaffer Tapes Violet 19mm x 25m	71
58064W	58064 W	Gaffer Tapes White 19mm x 50m	71
58065BLK	58065 BLK	Gaffer Tapes black 38mm x 50m	71
58065BLU	58065 BLU	Gaffer Tapes Blue 38mm x 25m	71
58065CAM	58065 CAM	Camouflage tape 38 mm x 25 m	71
58065GRN	58065 GRN	Gaffer Tapes Green 38mm x 25m	71
58065LTBLU	58065 LTBLU	Gaffer Tapes light Blue 38mm x 25m	71
58065NGRN	58065 NGRN	Gaffer Tapes Neon Green 38mm x 25m	68
58065NOR	58065 NOR	Gaffer Tapes Neon Orange 38mm x 25m	68
58065NPIN	58065 NPIN	Gaffer Tapes Neon Pink 38mm x 25m	68
58065NYEL	58065 NYEL	Gaffer Tapes Neon Yellow 38mm x 25m	68
58065RED	58065 RED	Gaffer Tapes Red 38mm x 25m	71
58065VIO	58065 VIO	Gaffer Tapes Violet 38mm x 25m	71
58065W	58065 W	Gaffer Tapes White 38mm x 50m	71
5806BLK	5806 BLK	Gaffa black 50mm x 50m	66
5806BLK100	5806 BLK 100	Gaffa black 100 mm x 50m	66
5806S	5806 S	Gaffa silver 50 mm x 50m	66
5806W	5806 W	Gaffa white 50 mm x 50m	66
5807BLK	5807 BLK	Gaffa black 50 mm x 50m	66
5807BLK	5807 BLK	Gaffa black 50 mm x 50m	71
5807S	5807 S	Gaffa silver 50 mm x 50m	66
5807S	5807 S	Gaffa silver 50 mm x 50m	71
5807W	5807 W	Gaffa white 50 mm x 50m	66
5807W	5807 W	Gaffa white 50 mm x 50m	71
580813BLK	580813 BLK	Insulating Tape 0.13 x 19 mm x 20 m black	69
580813BLU	580813 BLU	Insulating Tape 0.13 x 19 mm x 20 m blue	69
580813BRN	580813 BRN	Insulating Tape 0.13 x 19 mm x 20 m brown	69
580813GREY	580813 GREY	Insulating Tape 0.13 x 19 mm x 20 m grey	69
580813GRN	580813 GRN	Insulating Tape 0.13 x 19 mm x 20 m green	69
580813RED	580813 RED	Insulating Tape 0.13 x 19 mm x 20 m red	69
580813RNB10	580813 RNB 10	Insulating Tape 0.13 x 15 mm x 10 m set of 10 colors	69
580813RNB5	580813 RNB 5	Insulating Tape 0.13 x 15 mm x 10 m set of 5 colors	69
580813VIO	580813 VIO	Insulating Tape 0.13 x 19 mm x 20 m violet	69
580813W	580813 W	Insulating Tape 0.13 x 19 mm x 20 m white	69
580813YEGR	580813 YEGR	Insulating Tape 0.13 x 19 mm x 20 m yellow/green	69
580813YEL	580813 YEL	Insulating Tape 0.13 x 19 mm x 20 m yellow	69
580819BLK	580819 BLK	Insulating Tape 0.19 x 19 mm x 20 m black	69
580819BLU	580819 BLU	Insulating Tape 0.19 x 19 mm x 20 m blue	69
580819RED	580819 RED	Insulating Tape 0.19 x 19 mm x 20 m red	69
580819W	580819 W	Insulating Tape 0.19 x 19 mm x 20 m white	69
580819YEL	580819 YEL	Insulating Tape 0.19 x 19 mm x 20 m yellow	69
5808BLK	5808 BLK	PVC Insulating Tape black 19 mm x 33m	68
5808BLU	5808 BLU	PVC Insulating Tape blue 19 mm x 33m	68
5808BRW	5808 BRW	PVC Insulating Tape brown 19 mm x 33m	68
5808GREY	5808 GREY	PVC Insulating Tape grey 19 mm x 33m	68
5808GRN	5808 GRN	PVC Insulating Tape green 19 mm x 33m	68
5808OR	5808 OR	PVC Insulating Tape orange 19 mm x 33m	68
5808RED	5808 RED	PVC Insulating Tape red 19 mm x 33m	68
5808VIOLETT	5808 VIO	PVC Insulating Tape violet 19 mm x 33m	68
5808W	5808 W	PVC Insulating Tape white 19 mm x 33m	68
5808YEL	5808 YEL	PVC Insulating Tape yellow 19 mm x 33m	68
5810	5810	Hook and Loop Fastener Double Roll 20 mm wide	45
5811	5811	Hook and Loop Fastener Double Roll self-adhesive 20 mm wide	45
5813	5813	Self-Adhesive Marking Tape white 19mm x 30m	68
58141	Gorilla Wipes	Cleaning Cloths	77
5815	5815	Back to Back Hook and Loop Fastener 16 mm	45
5816	5816	Back to Back Hook and Loop Fastener 20 mm	45
5817	5817	Back to Back Hook and Loop Fastener 30 mm	45
5817019	5817019	Paper Masking Tape 19mm x 50m	69
5817025	5817025	Paper Masking Tape 25mm x 50m	69
5817050	5817050	Paper Masking Tape 50MM X 50M	69
58180ARMY	58180 ARMY	Waterproof, bronze-green PE-coated textile tape 50mm x 50m	67
5820022	5820022	PP carpet tape Double sided adhesive 50mm x 25m	69
58205MBLK	58205 MBLK	Foil Gaffa Tape Matt Black 50mm x 25m	67
5821022	5821022	Cloth carpet tape Double sided adhesive 50mm x 25m	69
5821550	5821550	Cloth carpet tape Plasticiser resistant Double sided adhesive 50mm x 25m	70
5853050PH	5853050 PH	Anti-Slip Tape 50mm x 18m phosphor	70
5853050S	5853050 S	Anti-Slip Tape 50mm x 18m black	70
5853050SG	5853050 SG	Anti-Slip Tape 50mm x 18m black/yellow	70
5853050TR	5853050 TR	Anti-Slip Tape 50mm x 18m transparent	70
5862025	5862025	Phosphortape 25mm x 10m	70
5865050	5865050	Cloth-Warning-Tape 50mm x 25m black/yellow	70
5866950S	5866950 S	Textile Tape 50mm x 50m black	70
5868615S	5868615 S	Tunnel Tape 150mm x 15m black	71
5868615SG	5868615 SG	Tunnel Tape 150mm x 15m black/yellow	71
5924BLP	5924 BLP	Mounting Kit for two 19" Units with Hex Nuts M6	80
5925BLP	5925 BLP	Mounting Kit for two 19" Units with Square Nuts M6	80
7839	7839	Plastic Blank Panel black	82

REGISTER

Article no.	Model name	Description	Page
85002	Defender 3	Cable Protector 3-channels	27
85002LUX	3 LUX	Cable Protector 3-channel LUX	22
85004	Defender 3	Connector Plugs for 85002 Cable Protector 3-channels	27
85008	Defender 3	End Ramp for 85002 Cable Protector 3-channels	27
85009	Defender 3	45° Curve for 85002 Cable Protector 3-channels	27
85100	Defender Compact	Cable Protector 7-channels	32
85103	Defender Compact	Base for 85100 Cable Protector 5-channels	32
85150	Defender Nano	Cable Protector 6-channels	31
85150LUX	Nano LUX	Cable Protector 6-channel LUX	22
85158F	Nano ER F	End Ramp female for 85150/85150BLK Cable Protector 6-channels	31
85158M	Nano ER M	End Ramp male for 85150/85150BLK Cable Protector 6-channel	31
85160	Defender Office	Cable Crossover 4-channels black	33
85160GREY	Office GREY	Cable Duct 4-channel grey	33
85160YEL	Office YEL	Cable Duct 4-channel yellow	33
85161BLK	Office C BLACK	90° Curve black for 85160 Cable Duct 4-channel	33
85161GREY	Office C GREY	90° Curve grey for 85160 Cable Duct 4-channel	33
85161YEL	Office C YEL	90° Curve yellow for 85160 Cable Duct 4-channel	33
85168BLK	Office ER BLACK	End Ramp black for 85160 Cable Crossover 4-channels	33
85168GREY	Office ER GREY	End Ramp grey for 85160 Cable Crossover 4-channels	33
85168YEL	Office ER YEL	End Ramp yellow for 85160 Cable Crossover 4-channels	33
85200	Defender Mini	Cable Protector 3-channels	30
85200LUX	Mini LUX	Cable Protector 3-channel LUX	22
85208F	Mini ER F	End Ramp female for 85200/85200BLK Cable Protector 3-channels	30
85208M	Mini ER M	End Ramp male for 85200/85200BLK Cable Protector 3-channel	30
85210L	Mini L	45° Curve left for 85200 Cable Protector 3-channel	30
85210R	Mini R	45° Curve right for 85200 Cable Protector 3-channel	30
85300	Defender Midi	Cable Protector 5-channels	28
85300BLUE	Midi BLUE	Cable Protector 5-channel blue for 85305SET Wheel Chair Ramp	34
85300LUX	Midi 5 LUX	Cable Protector 5-channel LUX	22
85301	Defender Midi 4C	Cable Protector 4-channels	29
85301LUX	Midi 5 LUX	Cable Protector 5-channel LUX	22
85305SET	Midi SET	Wheelchair Ramp Set	34
85306	Defender Wheelchair Ramp	Ramp Module	34
85307L	Wheelchair Ramp ER L	Left Extremity Piece	34
85307R	Wheelchair Ramp ER R	Right Extremity Piece	34
85308	Defender Midi	End Ramp for 85300 Cable Protector 5-channels	28
85308	Defender Midi	End Ramp for 85300 Cable Protector 5-channels	29
85310	Defender Midi	45° Curve for 85300 Cable Protector 5-channels	28
85500	Defender XXL	Cable Protector 5-channels	26
85500LUX	XXL LUX	Cable Protector 5-channel LUX	22
85510	Defender XXL	End Ramp for 85500 Cable Protector 5-channels	26
85600	Defender Ultra L	Cable Protector 2-channels	24
85600LUX	Ultra L LUX	Cable Protector 2-channel LUX	22
85601	Defender Ultra L 2	Cable Protector 2+4-channels	25
85601LUX	Ultra L 2 LUX	Cable Protector 2 + 4 channels LUX	22
85900B	85900 B	Fine rib rubber Mat black 1 m x 8 m	45
85970	85970	Fine rib rubber Mat black 0.7 m x 10 m	45
85BOX	Box	Transport Box	35
8721	8721	19" Flat Rack Panel Aluminium, 1U	83
8721STL	8721 STL	19" Flat Rack Panel steel, 1U	83
8721V	8721 V	19" Flat Ventilation Panel 1U with vertical Slots	82
8722	8722	19" Flat Rack Panel Aluminium, 2U	83
872205STL	872205 STL	19" U-shaped rack panel 0.5 U steel	83
87221	87221	19" U-shaped Rack Panel 1 U aluminium	83
872212	872212	19" U-shaped rack panel Universal 1U	81
872213	872213	19" U-shaped rack panel 12 Sockets 1U	81
872214	872214	19" U-shaped rack panel 24 Sockets 2U	81
872215	872215	19" U-shaped rack panel 12 Sockets 1U with tie bar	81
87221BRUSH	87221 BRUSH	Rack Panel 1 U steel with Brush Strip	87
87221STL	87221 STL	19" U-shaped Rack Panel 1 U steel	83
87221V	87221 V	19" U-shaped Ventilation Panel 1U with vertical Slots	83
87221VH	87221 VH	19" U-shaped ventilation panel with horizontal slots, 1U	83
87221VR	87221 VR	19" U-shaped ventilation panel with round holes, 1U	83
87222	87222	19" U-shaped Rack Panel 2 U aluminium	83
872225	872225	19" U-shaped rack panel 16 Sockets 1U with tie bar	81
872230	872230	19" angled rack panel for 8 x D-TYPE sockets	81
87222BRUSH	87222 BRUSH	Rack Panel 2 U steel with Brush Strip	87
87222STL	87222 STL	19" U-shaped Rack Panel 2 U steel	83
87222VH	87222 VH	19" U-shaped ventilation panel with horizontal slots, 2U	83
87222VR	87222 VR	19" U-shaped ventilation panel with round holes, 2U	83
87223	87223	19" U-shaped Rack Panel 3 U aluminium	83
87223STL	87223 STL	19" U-shaped Rack Panel 3 U steel	83
87223VR	87223 VR	19" U-shaped ventilation panel with round holes, 3U	83
87224	87224	19" U-shaped Rack Panel 4 U aluminium	83
87224STL	87224 STL	19" U-shaped Rack Panel 4 U steel	83
8722STL	8722 STL	19" Flat Rack Panel Stahl, 2U	83
8723	8723	19" Flat Rack Panel Aluminium, 3U	83
8723STL	8723 STL	19" Flat Rack Panel Stahl, 3U	83
8724	8724	19" Flat Rack Panel Aluminium, 4U	83
8724STL	8724 STL	19" Flat Rack Panel Stahl, 4U	83
87302	87302	Rackbox with Latch 2 U	86

REGISTER

Article no.	Model name	Description	Page
87303	87303	Rackbox with Latch 3 U	86
87401E	87401 E	Rack Drawer 1 U steel	85
87402	87402	Rack Drawer 2 U steel	85
87402A	87402 A	Rack Drawer 2 U aluminium	85
87402E	87402 E	Rack Drawer 2 U steel	85
87402P1	87402 P1	Separating Web transverse for 19" Drawers 2 U	85
87402P2	87402 P2	Separating Web deep for 19" Drawers 2 U	85
87402T	87402 T	Universal Separating Web System for Rack Drawers 2 U	85
87403	87403	Rack Drawer 3 U steel	85
87403A	87403 A	Rack Drawer 3 U aluminium	85
87403E	87403 E	Rack Drawer 3 U steel	85
87404	87404	Rack Drawer 4 U steel	85
87404A	87404 A	Rack Drawer 4 U aluminium	85
87406	87406	Rack Drawer 6 U	85
87406MI	87406 MI	Microphone Insert for 87406 Rack Drawer 6 U	85
87407	87407	19" Housing 1 U rackmount	84
87407V	87407 V	19" Housing 1 U rackmount with Vent Slots	84
87408	87408	19" Housing 2 U rackmount	84
87408V	87408 V	19" Housing 2 U rackmount with Vent Slots	84
87409	87409	19" Housing 3 U rackmount	84
87409V	87409 V	19" Housing 3 U rackmount with Vent Slots	84
87412	87412	19" rackmount Computer Keyboard Tray	86
87413	87413	19" Sliding Monitor Shelf	86
874331	874331	19" CD Shelf	86
87441	87441	19" Front Panel with plexiglass Insert 1 U	82
87442	87442	19" Front Panel with plexiglass Insert 2 U	82
87445	87445	19" Cover with punched hole front, 1U, coarse	82
87446	87446	19" Cover with punched hole front, 2U, coarse	82
87446VR	87446 VR	19" Cover with punched hole front, 2U, fine	82
87447	87447	19" Cover with punched hole front, 3U, coarse	82
87447VR	87447 VR	19" Cover with punched hole front, 3U, fine	82
87451PRO	87451 PRO	19" LED Array Rack Light 1 U white	89
87451PROC	87451 PRO C	19" LED Array Rack Light 1 U multicolor	89
874571CHM	CHAMELEON	19" Rack Light 1 U chameleon (6 Colours)	89
874571WHI	WEIß	19" Rack Light 1 U satin white	89
87463	87463	LED Gooseneck Racklight - 2 Goosenecks	88
87463ULTRA	87463 ULTRA	Dual Gooseneck Cold White COB LED Rack Light	88
87463ULTRAC	87463 ULTRA C	Dual Gooseneck RGB and White COB LED Rack Light	88
87470	87470	Mains Power Strip 4 Sockets	54
87470USB	87470 USB	4-Outlet Power Strip With Dual USB Charging Ports	54
87471	87471	19" Mains Power Strip 8 Sockets	52
874714	874714	Power Strip 1 U 12 Sockets	55
874716	874716	19" 16-Outlet Power Strip	52
87471USB	87471 USB	8-Outlet 19" Rackmount Power Strip With Dual USB Charging Ports And On/Off Switch	53
87472	87472	19" Mains Power Strip, 2 U, 9 Sockets	51
87473	87473	19" Mains Power Strip 6 Sockets, 3 Circuits	51
87475	87475	19" Panel 3 U for Circuit Breakers	87
87478	87478	19" Mains Power Strip 8 Sockets, French Connectors	53
8747IP3	8747 IP 3	3-Outlet Power Strip with IP44 Rating	56
8747IP5	8747 IP 5	5-Outlet Power Strip with IP44 Rating	56
874753	8747 S 3	3-Outlet Power Strip With On/Off Switch	55
874753USB	8747 S 3 USB	3-Outlet Power Strip With Dual USB Charging Ports And On/Off Switch	56
874756	8747 S 6	6-Outlet Power Strip With On/Off Switch	55
8747X3	8747 X 3	3-Outlet Power Strip	57
8747X6	8747 X 6	6-Outlet Power Strip	57
87480	87480	19" Mains Power Strip, 2 U, 9 Sockets	50
87530	87530	Headphone Bracket 2 U	87
8754	8754	19" Rack Cradle 1 U	84
8755	8755	19" Rack Cradle 2 U	84
87551	87551	19" Rack Cradle 1 U 375 mm depth	84
87552	87552	19" Rack Cradle 2 U 375 mm depth	84
87553	87553	19" Rack Cradle 3 U 375 mm depth	84
87555	87555	19" Rack Cradle 2 U with Drawer Slides	86
87556	87556	19" Rack Cradle 1 U with Drawer Slides	86
8756	8756	19" Rack Cradle 2 U with Velcro	84
8757	8757	Rack Clamp 2 U	84
8758	8758	Rack Clamp 3 U	84
8759	8759	Rack Clamp 4 U	84
8763	8763	19" Rack Panel for 2 Axial Fans	82
8764	8764	19" Rack Panel for 1 Axial Fan	82
8765	8765	19" Rack Panel for 3 Axial Fans	82
87INLAY	87 INLAY	Nonslip Drawer Liner	86
AHPPROPORT4	PROPORT 4	4-Outlet Power Strip	52
B3000101	Standard	Stage Platform Indoor 2 x 1 m	13
B3000102	Standard	Stage Platform Indoor 2 x 0.5 m	14
B3000104	Standard	Stage Platform Indoor 1 x 1 m	14
B3000110	Standard	Stage Platform Indoor 1 x 0.5 m	15
B3000120	Standard	Stage Platform Indoor 1 x 1 x 1.41 m	15
B3000123	Standard	Stage Platform Indoor 1 x 1 x 2.24 m	15
B3000201	Standard	Stage Platform Outdoor 2 x 1 m	13

REGISTER

Article no.	Model name	Description	Page
B3000202	Standard	Stage Platform Outdoor 2 x 0.5 m	14
B3000204	Standard	Stage Platform Outdoor 1 x 1 m	14
B3000210	Standard	Stage Platform Outdoor 1 x 0.5 m	15
B3000220	Standard	Stage Platform Outdoor 1 x 1 x 1.41 m	15
B3000223	Standard	Stage Platform Outdoor 1 x 2 x 2.24 m	15
B3010101	Eco 1 Universal	Stage Platform Indoor 2 x 1 m	10
B3010102	Eco 1 Universal	Stage Platform Indoor 2 x 0.5 m	11
B3010104	Eco 1 Universal	Stage Platform Indoor 1 x 1 m	11
B3010110	Eco 1 Universal	Stage Platform Indoor 1 x 0.5 m	12
B3010120	Eco 1 Universal	Stage Platform Indoor 1 x 1 x 1.41 m	12
B3010123	Eco 1 Universal	Stage Platform Indoor 1 x 2 x 2.24 m	12
B3010201	Eco 1 Universal	Stage Platform Outdoor 2 x 1 m	10
B3010202	Eco 1 Universal	Stage Platform Outdoor 2 x 0.5 m	11
B3010204	Eco 1 Universal	Stage Platform Outdoor 1 x 1 m	11
B3010210	Eco 1 Universal	Stage Platform Outdoor 1 x 0.5 m	12
B3010220	Eco 1 Universal	Stage Platform Outdoor 1 x 1 x 1.41 m	12
B3010223	Eco 1 Universal	Stage Platform Outdoor 1 x 2 x 2.24 m	12
B4050020	4050020	Set of 4 Plug-In Legs 50 x 50 mm 20 cm	18
B4050040	4050040	Set of 4 Plug-In Legs 50 x 50 mm 40 cm	18
B4050060	4050060	Set of 4 Plug-In Legs 50 x 50 mm 60 cm	18
B4050080	4050080	Set of 4 Plug-In Legs 50 x 50 mm 80 cm	18
B4050100	4050100	Set of 4 Plug-In Legs 50 x 50 mm 100 cm	18
B4050120	4050120	Set of 4 Plug-In Legs 50 x 50 mm 120 cm	18
B4050140	4050140	Set of 4 Plug-In Legs 50 x 50 mm 140 cm	18
B4050160	4050160	Set of 4 Plug-In Legs 50 x 50 mm 160 cm	18
B4550040	4555040	Set of 4 Adjustable Telescopic Legs 40 - 60 cm (55 x 55 mm)	18
B4550060	4550060	Set of 4 Adjustable Telescopic Legs 60 - 100 cm (55 x 55 mm)	18
B4550100	4550100	Set of 4 Adjustable Telescopic Legs 100 - 160 cm (55 x 55 mm)	18
B4700-001	4700-001	Plastic Connecting Clamp for Stage Platforms	19
B4700-002	4700-002	Die-cast Zinc Connecting Clamp for Stage Platforms	19
B4700006	4700006	Leg-Clamp 2-fold 50 x 50 mm (Type B)	18
B4700007	4700007	Leg-Clamp 2-fold 50 x 50 mm (Type A)	18
B4700009	4700009	Leg-Clamp 2-fold 55 x 55 mm (Type C)	18
B4700012	4700012	Leg-Clamp 4-fold 50 x 50 mm (Type B)	18
B4700013	4700013	Leg-Clamp 4-fold 50 x 50 mm (Type A)	18
B4700014	4700014	Leg-Clamp 4-fold 55 x 55 mm (Type D)	18
B4700015	4700015	Leg-Clamp 4-fold 55 x 55 mm (Type C)	18
B4700041	4700041	Transport castor set for stage platforms with plug-in feet	18
B5000Z003	5000 Z 003	Handrail for Modular Stairs, Steel for 3-4 stairs	17
B5000Z005	5000 Z 005	Handrail for Modular Stairs, Steel for 2 stairs	17
B5000Z015	5000 Z 015	Handrail for Modular Stairs, Steel for 5 stairs	17
B5000Z016	5000 Z 016	Handrail for Modular Stairs, Steel for 6 stairs	17
B5000Z018	5000 Z 018	Handrail for Modular Stairs, Steel for 7 stairs	17
B500111003020	500111003020	Stair, Steel, 1-step, for platforms up to 40 cm	16
B500211003020	500211003020	Stair, Steel, 2-step, for platforms up to 60 cm	16
B500311003020	500311003020	Stair, Steel, 3 step, for platforms up to 80 cm	16
B500411003020	500411003020	Stair, Steel, 4-step, for platforms up to 100 cm	16
B500511003020	500511003020	Stair, Steel, 5-step, for platforms up to 120 cm	16
B500611003020	500611003020	Stair, Steel, 6-step, for platforms up to 140 cm	16
B500711003020	500711003020	Stair, Steel, 7-step, for platforms up to 160 cm	16
B510111003020	510111003020	Stair, aluminum, 1-step, for platforms up to 40 cm	16
B510211003020	510211003020	Stair, aluminum, 2-step, for platforms up to 60 cm	16
B510311003020	510311003020	Stair, aluminum, 3-step, for platforms up to 80 cm	16
B510411003020	510411003020	Stair, aluminum, 4-step, for platforms up to 100 cm	16
B510511003020	510511003020	Stair, aluminum, 5-step, for platforms up to 120 cm	16
B510611003020	510611003020	Stair, aluminum, 6-step, for platforms up to 140 cm	16
B510711003020	510711003020	Stair, aluminum, 7-step, for platforms up to 160 cm	16
B5300100100	5300100100	Guardrail for Stage Platform, Steel 1 x 1 m	17
B5300100200	5300100200	Guardrail for Stage Platform, Steel 2 x 1 m	17
B5400	5400	Dolly for Stage Platforms for normal floors 2 x 1 m	19
B5410	5410	Dolly for Stage Platforms for sensitive floors 2 x 1 m	19
BATTERYBOXBIG	BATTERYBOX BIG	Battery Storage box for up to 8 batteries	75
BATTERYBOXSMALL	BATTERYBOX SMALL	Battery Storage box for 4 batteries	75
S33060SK	S 33060 SK	Safety Rope 3 mm with Fall Brake and Chain Link length 0.6 m	60
S37060	S 37060	Safety Rope 3 mm with Screw Link, 0.6 m	60
S37062B	S 37062 B	Safety Rope 3 mm with Chain Link length 0.6 m black	60
S42100	S 42100	Safety Rope 4 mm length 1 m	61
S43060SK	S 43060 SK	Safety Rope 4 mm with Fall Brake and Chain Link length 0.6 m	60
S43100SK	S 43100 SK	Safety Rope 4 mm with Fall Brake and Chain Link length 1 m	60
S45062B	S 45062 B	Safety Rope 4 mm with Screw Link, 0.6 m, black	60
S45100	S 45100	Safety Rope 4 mm with Screw Link, 1m	60
S50500	S 50500	Safety Rope 5 mm length 5 m for S505 Wire Clip for Ropes 4 - 5 mm	61
S505V2	S 50 S V2	Wire cable glider for 4 - 5 mm cables with coupling ring	62
S53100	S 53100	Safety Rope 5 mm with Screw Gate Carabiner length 1 m	61
S53102B	S 53102 B	Safety Rope 5 mm with Screw Gate Carabiner length 1 m black	61
S55100SK	S 55100 SK	Safety Rope 5 mm with Fall Brake and Chain Link length 1 m	60
S63100	S 63100	Safety Rope 6 mm with Screw Gate Carabiner length 1 m	61
S80500	S 80500	Safety Rope 8 mm length 5 m for S80VS Wire Clip for Ropes 6 - 8 mm	61
S82100	S 82100	Safety Rope 8 mm length 1 m	60
S93061	S 93061	Screw Link long, 6 mm thick	62
S93101	S 93101	Screw Link long, 10 mm thick	62

REGISTER

Article no.	Model name	Description	Page
SCS19	SCS 19	Cable holder for wall mounting	87
SH20325	SH 20325	Schackle with Bolt, Nut and Split Pin	62
SLED1BULTRA	SLED 1 B ULTRA	Gooseneck Light with Surface Mount Base	91
SLED1BXHR3	SLED 1 B XLR 3	Surface Mount 3-pin XLR Gooseneck Light Base with Power Adapter	91
SLED1ULTRABNC	SLED 1 ULTRABNC	BNC Gooseneck Light with 4 COB LEDs	90
SLED1ULTRAUSB	SLED 1 ULTRAUSB	Gooseneck Lamp, USB connector, 4 COB LEDs	90
SLED1ULTRAXLR3	SLED 1 ULTRA XLR 3	3-pin XLR Gooseneck Light with 4 COB LEDs	90
SLED1ULTRAXLR3A	SLED 1 ULTRAXLR 3 A	Angled 3-pin XLR Gooseneck Light with 4 COB LEDs	90
SLED1ULTRAXLR4	SLED 1 ULTRAXLR 4	4-pin XLR Gooseneck Light with 4 COB LEDs	90
SLED1ULTRAXLR4A	SLED 1 ULTRAXLR 4 A	Angled 4-pin XLR Gooseneck Light with 4 COB LEDs	90
VBC4250BLK	VBC 4250 BLK	Spannfix black	46
VBC4250WHI	VBC 4250 WHI	Spannfix white	46
VBC5250BLK	VBC 5250 BLK	Spannfix black	46
VBC5250WHI	VBC 5250 WHI	Spannfix white	46
VIMN2025	Professional Electronics 2025	3 V Battery CR 2025	75
VIMN2032	Professional Electronics 2032	3 V Battery CR 2032	75
VIMN4003	Industrial 4003	1.5 V Battery MICRO AAA	75
VIMN4006	Industrial 4006	1.5 V MIGNON AA	75
VIMN4014	Industrial 4014	1.5 V Battery LR14 BABY C	75
VIMN4020	Industrial 4020	1.5 V Battery Mono D	75
VIMN4022	Industrial 4022	9 V Block Battery	75
VMIDCBLK	VMIDC BLK	Holdon Midi Clip black	46
VMIDCWHI	VMIDC WHI	Holdon Midi Clip white	46
VMINCBLK	VMINC BLK	Holdon Mini Clip black	46
VMINCWHI	VMINC WHI	Holdon Mini Clip white	46
VP26135BLK	VP 26135 BLK	Cable Ties 135 mm black	74
VP36200	VP 36200	Cable Ties 200 mm	74
VP36200BLK	VP 36200 BLK	Cable Ties 200 mm black	74
VP36290	VP 36290	Cable Ties 290 mm	74
VP36290BLK	VP 36290 BLK	Cable Ties 290 mm black	74
VP48360	VP 48360	Cable Ties 360 mm	74
VP48360BLK	VP 48360 BLK	Cable Ties 360 mm black	74
VR1616BLK	VR 1616 BLK	Hook and Loop Cable Tie 16 cm black	74
VR1616BLU	VR 1616 BLU	Hook and Loop Cable Tie 16 cm blue	74
VR1616GRN	VR 1616 GRN	Hook and Loop Cable Tie 16 cm green	74
VR1616RED	VR 1616 RED	Hook and Loop Cable Tie 16 cm red	74
VR1616YEL	VR 1616 YEL	Hook and Loop Cable Tie 16 cm yellow	74
VR2020BLK	VR 2020 BLK	Hook and Loop Cable Tie 20 cm black	74
VR2020BLU	VR 2020 BLU	Hook and Loop Cable Tie 20 cm blue	74
VR2020GRN	VR 2020 GRN	Hook and Loop Cable Tie 20 cm green	74
VR2020RED	VR 2020 RED	Hook and Loop Cable Tie 20 cm red	74
VR2020YEL	VR 2020 YEL	Hook and Loop Cable Tie 20 cm yellow	74
VR2030BLK	VR 2030 BLK	Hook and Loop Cable Tie 30 cm black	74
VR2030BLU	VR 2030 BLU	Hook and Loop Cable Tie 30 cm blue	74
VR2030GRN	VR 2030 GRN	Hook and Loop Cable Tie 30 cm green	74
VR2030RED	VR 2030 RED	Hook and Loop Cable Tie 30 cm red	74
VR2030YEL	VR 2030 YEL	Hook and Loop Cable Tie 30 cm yellow	74
VR2530BLK	VR 2530 BLK	Hook and Loop Cable Tie 30 cm black	74
VR2530BLU	VR 2530 BLU	Hook and Loop Cable Tie 30 cm blue	74
VR2530GRN	VR 2530 GRN	Hook and Loop Cable Tie 30 cm green	74
VR2530RED	VR 2530 RED	Hook and Loop Cable Tie 30 cm red	74
VR2530YEL	VR 2530 YEL	Hook and Loop Cable Tie 30 cm yellow	74
VR4040BLK	VR 4040 BLK	Hook and Loop Cable Tie 40 cm black	74
VR4040BLU	VR 4040 BLU	Hook and Loop Cable Tie 40 cm blue	74
VR4040GRN	VR 4040 GRN	Hook and Loop Cable Tie 40 cm green	74
VR4040RED	VR 4040 RED	Hook and Loop Cable Tie 40 cm red	74
VR4040YEL	VR 4040 YEL	Hook and Loop Cable Tie 40 cm yellow	74
VR5050BLK	VR 5050 BLK	Hook and Loop Cable Tie 50 cm black	74
VR5050BLU	VR 5050 BLU	Hook and Loop Cable Tie 50 cm blue	74
VR5050GRN	VR 5050 GRN	Hook and Loop Cable Tie 50 cm green	74
VR5050RED	VR 5050 RED	Hook and Loop Cable Tie 50 cm red	74
VR5050YEL	VR 5050 YEL	Hook and Loop Cable Tie 50 cm yellow	74
VR5080BLK	VR 5080 BLK	Hook and Loop Cable Tie 80 cm black	74
VR5080BLU	VR 5080 BLU	Hook and Loop Cable Tie 80 cm blue	74
VR5080GRN	VR 5080 GRN	Hook and Loop Cable Tie 80 cm green	74
VR5080RED	VR 5080 RED	Hook and Loop Cable Tie 80 cm red	74
VR5080YEL	VR 5080 YEL	Hook and Loop Cable Tie 80 cm yellow	74
VT2215	VT 2215	Hook and Loop Cable Tie 150 mm black	74
VT2520	VT 2520	Hook and Loop Cable Tie 200 mm black	74
VT2830	VT 2830	Hook and Loop Cable Tie 306 mm black	74

Adam Hall GmbH
Headquarters

Daimlerstr. 9
D-61267 Neu-Anspach
Germany
Tel.: (+49) 60 81 / 94 19 0
Tel.: (+49) 60 81 / 94 19 1000
E-mail: mail@adamhall.com

Adam Hall UK

Tel.: (+44) 0 17 02 61 39 22
mail.uk@adamhall.co.uk

Adam Hall

Spain/France/Portugal/Italy

Carrer Ramón Turró 124
08005 Barcelona
Tel. Spain: (+34) 93 363 53 63
Tel. France: (+33) 4 67 66 27 87
Tel. Italy: 0800 87 39 16
mail.sp@adamhall.com
mail.fr@adamhall.com
mail.pt@adamhall.com
mail.it@adamhall.com

Adam Hall Scandinavia

Tel.: (+45) 36 70 05 27
mail.dk@adamhall.com

Adam Hall Benelux

Tel.: +31 (0) 611281874
mail.benelux@adamhall.com

Adam Hall Poland

Tel.: +48 (0) 782 510 410
mail.pl@adamhall.com

Adam Hall

Slovenia/Croatia/Hungary/
South Eastern Europe

Tel.: (+386) 51 478 581
mail.si@adamhall.com

Adam Hall Asia

11 Woodlands Close, #01-12
Singapore 737853
Tel.: (+65) 315293
asia@adamhall.com

EDITION 2017

The information and numerical data contained in this publication has been prepared as a general guide to the products, potential buyers and users must however satisfy themselves as to the suitability and the applicability of the products for their particular purposes and duties. No responsibility is assumed for any errors herein. The company reserves the right to alter the designs, materials and specifications of the products shown in this publication without notice.