



T57326 – SCAFF BOOM ARM LOAD TABLE

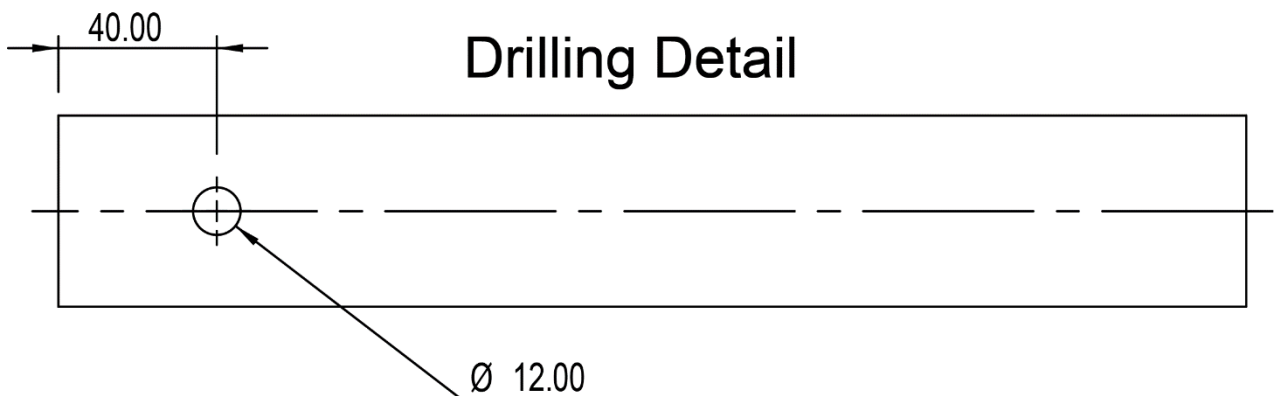
48.3mm (1 29/32") Diameter x 7 SWG Aluminium Barrel (EN AW-6082)			
Material	Length	WLL	Typical Deflection
Aluminium Barrel	250mm	200Kg	4.0mm
Aluminium Barrel	500mm	100Kg	8.0mm
Aluminium Barrel	750mm	75Kg	14.0mm
Aluminium Barrel	1000mm	50Kg	21.0mm

48.3mm Diameter x 3.2mm Galvanised Steel Tube (EN39 European Standard)			
Material	Length	WLL	Typical Deflection
Galvanised Tube	250mm	200Kg	3.0mm
Galvanised Tube	500mm	100Kg	6.0mm
Galvanised Tube	750mm	75Kg	8.0mm
Galvanised Tube	1000mm	50Kg	11.0mm

Working Load Limits only apply to these sizes and grades of material.

If the material grade is unknown **DO NOT USE**.

Doughty Engineering Ltd stock both barrels/tubes.



Doughty Engineering Ltd can supply cut and drilled barrel/tube on request. Contact: sales@doughty-engineering.co.uk