

IKRACK

RACK EARS FOR IKON AMPLIFIERS

Features

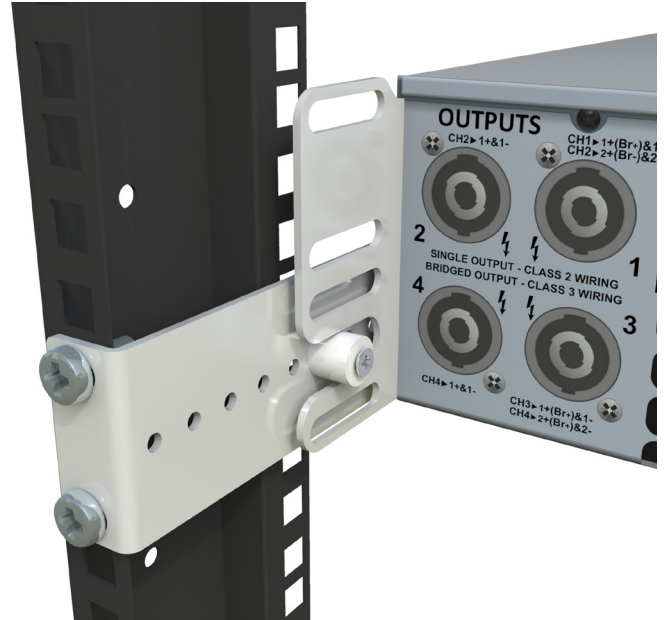
- Rear Support for iKON amplifiers installed in 19" racks
- Easily remove the amplifier from the rack with no access to the rear
- Option for lock to prevent removal

Applications

- Primarily touring amplifier racks but also installed racks.

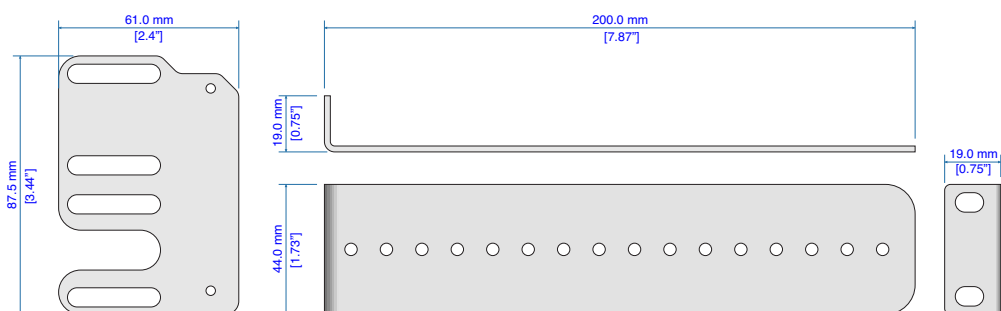
Contents

- 2 x Amplifier brackets
- 2 x rack brackets
- 2 x Nylon bush
- 2 x M4 x 25mm Countersunk screw
- 2 x M4 Nylok nut
- 4 x M3 Cap Head screw
- 1 x M2.5 Allen Key
- 1 x Fitting Instructions



Technical Specifications

Weight: 12.0kg (24.25lb)



IKRACK

IKRACK

RACK EARS FOR IKON AMPLIFIERS

Introduction

The IKRACK kit add rear support for any iKON amplifier and is recommend for all rack mounted amplifiers but particularly for touring racks where the vibration from movement could place unwanted stresses on the amplifier chassis if the amplifier is only supported via the front panel 19" rack fixings

Requirements

The amplifier rack must have rear mounted 19" rack strip in addition to the front. The depth between front and rear is relatively unimportant as the rack bracket allows for up to 180mm of variation.

Four standard 19" rack cage nuts and fixing screws (Most commonly M6 in Europe) are required in addition to the four used for the front panel.

Standard tools are required to fit the brackets, a Pozidrive PZ1 screwdriver and a suitable screwdriver for the rack screws. A small pair of pliers or a 7mm spanner

IKRACK

RACK EARS FOR IKON AMPLIFIERS

Fitting the Amplifier Brackets

The two rear support brackets are fitted to each side of the amplifier at the back using the M3 hex head screws. Remove the two screws in the amplifier rear panel, these can be discarded. Attach the brackets using the M3 screws tightening them with the M2.5 Allen Key (Hex wrench) supplied with the kit.



IKRACK

RACK EARS FOR IKON AMPLIFIERS

Assembling the Rack Bracket

The rack brackets have 16 holes available for fitting the nylon bush which will support the amplifier by locating into the large slot in the amplifier bracket.

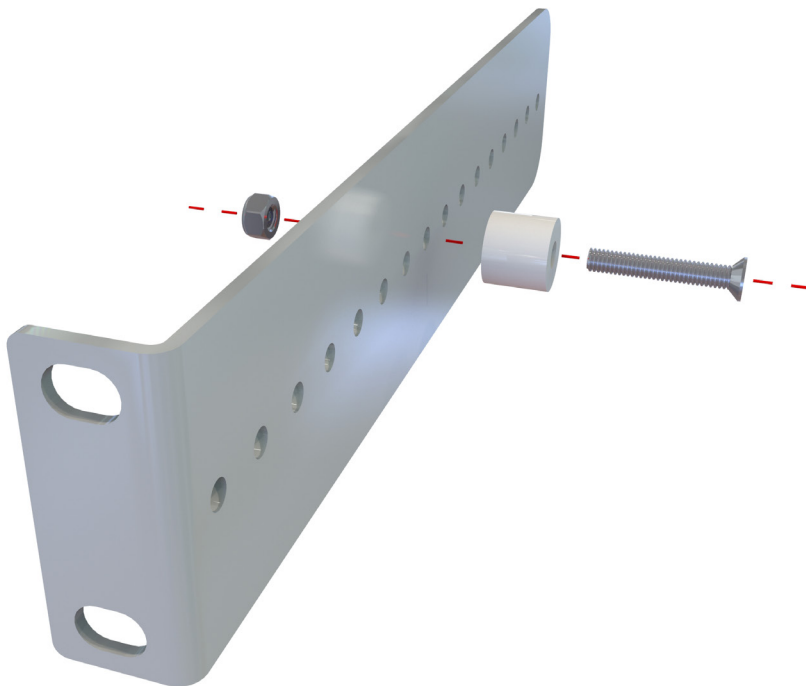
Fit the amplifier in the rack using the front panel rack screws.

Temporarily position one of the rack brackets on the rear rack strip at a height at which the holes in the bracket line up with the locating slot.

Make a note of which hole is closest to the centre of the slot.

Remove the amplifier from the rack.

Fit the Nylon bush in place using the appropriate hole that you identified using the M4x25 countersunk screw and M4 Nylok nut.



Repeat on the second bracket.

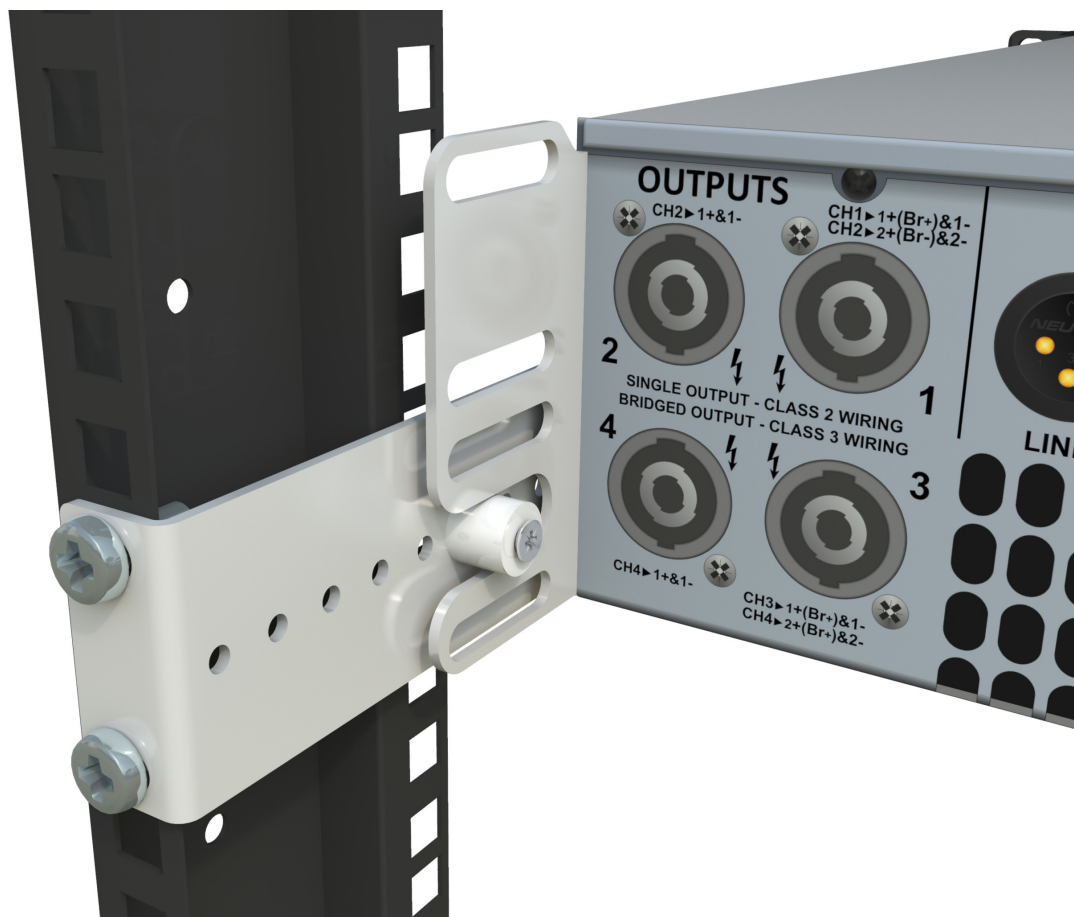
IKRACK

RACK EARS FOR IKON AMPLIFIERS

Fit two cage nuts onto the rear rack strip at the correct height to ensure that the brackets will engage.

Screw the brackets into the left and right positions (they can be used on either side) with two rack screws.

Fit the amplifier into the rack and check that the rear support bracket engages on the Nylon bushes on both sides supporting the weight of the amplifier at the rear.



Screw the amplifier into the rack using the four rack mount holes in the front panel.

IKRACK

RACK EARS FOR IKON AMPLIFIERS

Permanent Fixing

The kit can be used to support the rear of the amplifier and secure it so that it cannot be easily removed from the front. To do this follow the instructions above to fit the amplifier brackets.

In addition to the slots designed to locate on the nylon bushes for the removable option, the bracket also features four smaller slots. These can be used to attach the bracket to the rear rack strip using the return on the strip and standard rack cage nuts and screws. Note that the rear rack strip will need to be closer aligned to the bracket than if using the removable solution although the slots allow a deviation of 25mm. You will also need to use washers or spacers between the bracket and rack strip should there be a gap, on no account should you tighten rack screws in such a way as to bend the brackets to close any gap.

