

CDDL YA15B

YOKE ASSEMBLY FOR CDD-LIVE15 AND XD15

Features

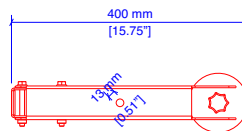
- Ceiling, truss or wall mount for CDD-LIVE15 and XD15
- Landscape (ceiling/truss mount) or Portrait (wall mount) configuration.
- 360° vertical adjustment in landscape mode (ceiling/truss mount)
- 360° horizontal adjustment when ceiling/truss mounted from central point
- 60° horizontal adjustment when wall mounted (portrait mode only)
- Rubber spacer supplied for use with XD15
- Handwheel adjustment for portable applications
- Hex bolt adjustment for installed systems

Applications

- Portable and installed CDD-LIVE15 and XD15 systems

Contents

- 1 x CDD-LIVE15/XD15 Yoke top frame
- 1 x CDD-LIVE15/XD15 Yoke bottom frame
- 1 x XD15 Rubber spacer
- 1 x M8x30 Handwheel
- 1 x M8x40 Hex Bolt
- 2 x M8x70 Cap head hex bolt
- 3 x M8 Plain washer
- 1 x M8 Spring washer



CDDL YA15B

CDD-LIVE12/CD12 FLYING YOKE

Technical Specifications

Weight:	9.8kg (21.61lb)
Material:	Powder coated steel

