

SX218GRiDi

INSTALLATION FLYING FRAME FOR SX218

Features

- Two point lift
- Available in black (SX218GRiDi) or white (SX218GRiDi-W)

Applications

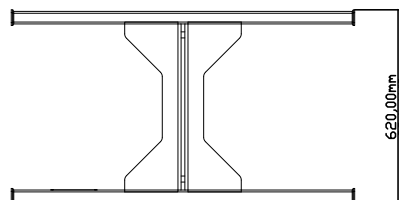
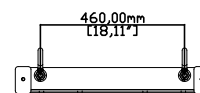
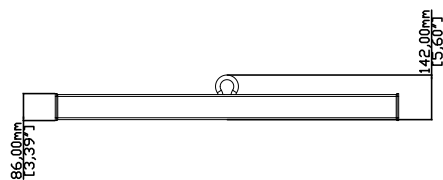
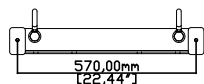
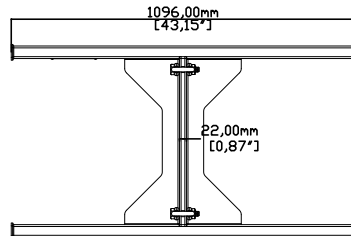
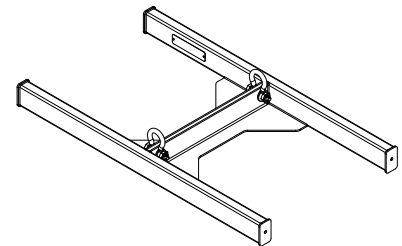
- Installation of up to 6 flown SX218 subwoofers when used in conjunction with the SX218FKIT

Contents

- 1 x SX218 install flying frame
- 4 x M10x50 BTN SKT bolt
- 4 x M10 washer
- 2 x 3.25t shackle

Technical Specifications

WEIGHT	23kgs (50.7lbs)
MATERIAL	Weatherised polyster powder coated steel



SX218GRiDi

INSTALLATION FLYING FRAME FOR SX218

Application Examples

