

TH
SERIES

THREE-WAY, BI-AMP, HIGH PERFORMANCE LOUDSPEAKER SYSTEMS



Unite Your Audience
The Martin Audio Experience



TH SERIES

TH Series feature standalone loudspeakers engineered to achieve maximum output from relatively compact enclosures. They are very efficient, very loud and capable of delivering thumping full-frequency performance with superb sonic characteristics.

Designed to be used individually, they can offer a competitive alternative to arrayed systems in medium and large-scale clubs and installations.

Comprising three models, TH Series loudspeakers are configured as bi-amped, three-way systems. The three-way design approach

delivers very high output and extended frequency response with maximum fidelity, while internal passive crossovers for the mid/high sections make the most effective use of amplifier count.

TH Series loudspeakers deliver the Martin Audio signature sound of warmth, clarity and smooth frequency response with ease. Enhanced extreme low frequency performance can be achieved by supplementing a TH Series loudspeaker with a Martin Audio SX Series subwoofer — creating an impressively powerful and dynamic four-way system.



FEATURES

- Three-way, bi-amp loudspeaker systems
- High output with extended bandwidth
- Efficient use of amplifier power

APPLICATIONS

- Mid to large club and DJ applications
- Mid to large scale installs such as stadia
- Select touring, theatre and corporate AV



THS

Capable of 135dB peak, THS is a powerful point source loudspeaker which combines very high output with extended bandwidth. It is ideally suited to medium to large-scale club applications and installations which call for exceptionally high sound levels from a compact, standalone loudspeaker system.

Packing three high-technology drivers into a relatively small trapezoid enclosure, its innovative three-way triaxial configuration delivers enhanced output for its size and gives it the edge over comparable two-way systems in terms of superior mid and high frequency performance. It features a 15" LF driver plus concentric 4" midrange and 2.5" HF ring radiators which transition into an 85° x 50° user-rotatable horn.

To ensure the most effective use of amplifier count, THS is designed to be bi-amplified, with an internal passive network performing the mid/high crossover function.





THV and THH

Capable of 139dB peak, THV and THH are very high performance, all-horn, three-way systems. Each is configured in a single, wide-bandwidth trapezoid package with extended frequency response and very high output capability. They are ideally suited to larger club applications and large-scale installs.

THV and THH feature a 15" LF driver, 10" midrange and 1" exit HF compression driver — all horn-loaded. Horn-loading the bass and midrange sections as well as the high frequency section maximises the efficiency of all bands, resulting in exceptional impact and output from a single enclosure.

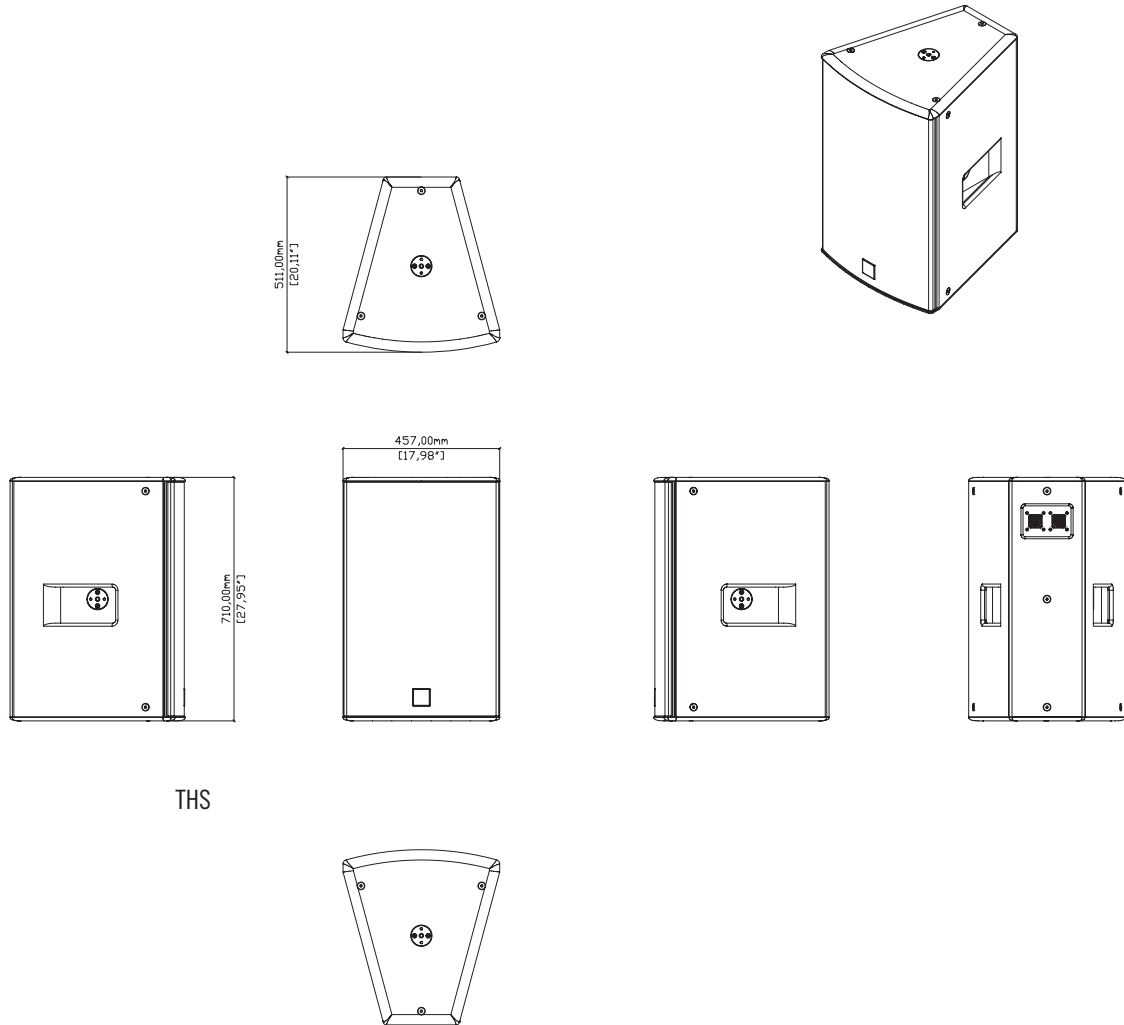
Bi-amp operation, with an internal passive network for the mid/high crossover, ensures the most effective use of available amplifier power.

THV is a vertically formatted system, while THH is horizontally formatted for installation in venues with low ceiling heights.





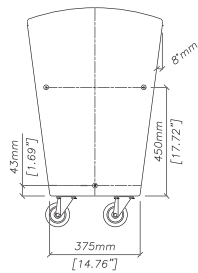
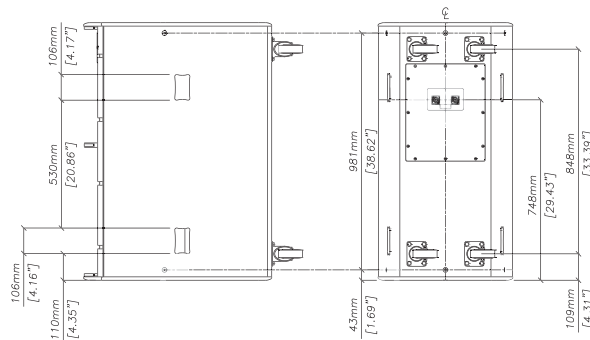
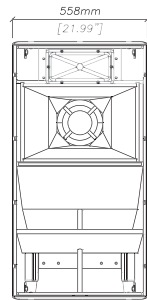
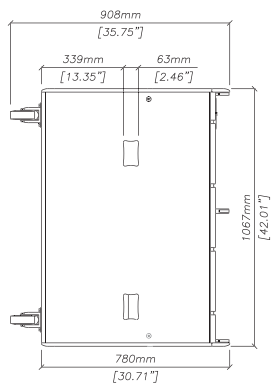
TECHNICAL SPECIFICATIONS



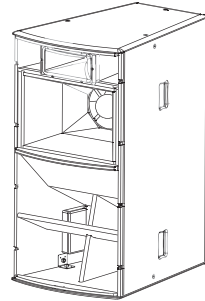
THS

THS

TYPE	Bi-Amp 3-way (Passive MF/HF) Loudspeaker
FREQUENCY RESPONSE (5)	54Hz-18kHz ± 3dB, -10dB @43Hz with preset
DRIVERS	LF: 15" (380mm) / 4" (100mm) coil neodymium motor MF: 1.4" (25mm) exit / 4" (100mm) coaxial HT polymer ring radiator HF: 1.4" (25mm) exit / 2.5" coaxial HT polymer ring radiator
RATED POWER	LF: 800W AES, 3200W Peak MF/HF: 110W AES, 440W Peak
RECOMMENDED AMPLIFIER	iK42/81 or VIA5002/5004
SENSITIVITY (6)	LF: 100dB MF/HF: 109dB
MAXIMUM SPL (9)	129dB continuous, 135dB peak
NOMINAL IMPEDANCE	LF: 8 Ohms MF/HF: 8 Ohms
DISPERSION (-6dB)	85° horizontal, 50° vertical
CROSSOVER	650Hz/4.8kHz
ENCLOSURE	Birch plywood
FINISH	Textured black finish
PROTECTIVE GRILLE	Black perforated steel
CONNECTORS	NLT4MPXX-BAG speakons (pair)
PIN CONNECTIONS (Input)	LF : 1+ / 1- , MF/HF : 2+/2-
PIN CONNECTIONS (Link)	1+ / 1-, 2+ / 2-
FITTINGS	13 x M10 fixings, 4 x M10 Bracket Mounting Points and Two Handle Pockets
DIMENSIONS	710mm (H) x 457mm (W) x 511mm (D) 27.95ins (H) x 17.98ins (W) x 20.11ins (D)
WEIGHT	35.6 kg / 78.48 lbs
ACCESSORIES	Portrait and landscape yokes (sold separately)



ALL DETAIL TYPICAL TO BOTH ENDS



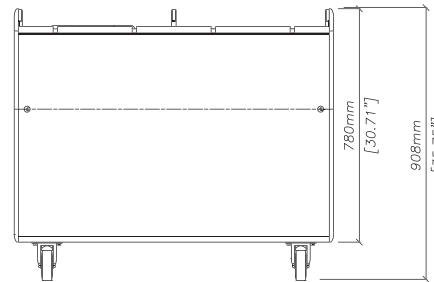
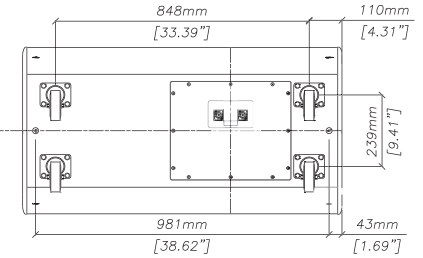
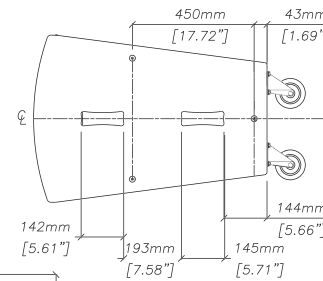
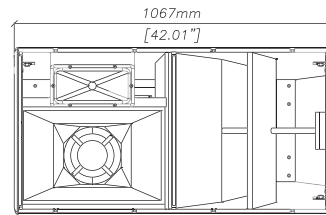
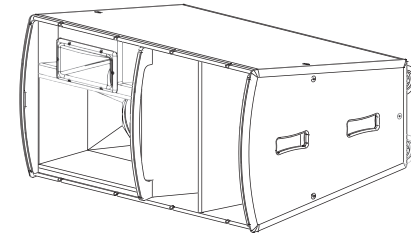
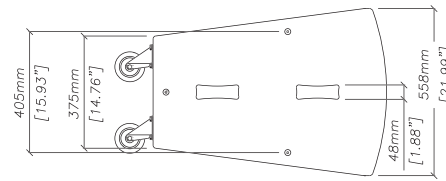
THV

THV

TYPE	Three-way bi-amp trapezoid Hybrid® fully horn loaded
FREQUENCY RESPONSE (5)	50Hz-18kHz ± 3dB
DRIVERS	15" (380mm)/4" (100mm) coil bass driver 10" (250mm)/2.5" (63.5mm) coil mid driver 1" (25mm) exit HF compression driver
RATED POWER (2)	LF: 750W AES, 3000W peak MF + HF: 300W AES, 1200W peak
RECOMMENDED AMPLIFIER	iK42 / VIA5002/5004
SENSITIVITY (6)	LF: 104dB, MF + HF: 104dB
MAXIMUM SPL (9)	133dB continuous, 139dB peak
NOMINAL IMPEDANCE	LF: 8 ohms, MF + HF: 8 ohms
DISPERSION (-6dB)	70° horizontal, 40° vertical
CROSSOVER	200Hz active, 2kHz passive
ENCLOSURE	250 litre, multi-laminate birch ply
FINISH	Textured black paint
PROTECTIVE GRILLE	Black perforated steel
CONNECTORS	2 x Neutrik NL4
PIN CONNECTIONS	LF+,- : 1+,1- (MF + HF) +,- : 2+,2-
FITTINGS	12 x M10 inserts 4 x 4" (100mm) castors 4 x pocket handles
DIMENSIONS (inc wheels)	(W) 558mm x (H) 1067mm x (D) 780mm (908mm) (W) 22ins x (H) 42ins x (D) 30.7ins (35.7ins)
WEIGHT	77.5kg (170.5lbs)

THH

TYPE	Three-way bi-amp trapezoid Hybrid® fully horn loaded
FREQUENCY RESPONSE (5)	50Hz-18kHz ± 3dB
DRIVERS	15" (380mm)/4" (100mm) coil bass driver 10" (250mm)/2.5" (63.5mm) coil mid driver 1" (25mm) exit HF compression driver
RATED POWER (2)	LF: 750W AES, 3000W peak MF + HF: 300W AES, 1200W peak
RECOMMENDED AMPLIFIER	iK42 / VIA5002/5004
SENSITIVITY (6)	LF: 104dB, MF + HF: 104dB
MAXIMUM SPL (9)	133dB continuous, 139dB peak
NOMINAL IMPEDANCE	LF: 8 ohms, MF + HF: 8 ohms
DISPERSION (-6dB)	70° horizontal, 40° vertical
CROSSOVER	200Hz active, 2kHz passive
ENCLOSURE	250 litre, multi-laminate birch ply
FINISH	Textured black paint
PROTECTIVE GRILLE	Black perforated steel
CONNECTORS	2 x Neutrik NL4
PIN CONNECTIONS	LF+, - : 1+, 1- (MF + HF) +, - : 2+, 2-
FITTINGS	12 x M10 inserts 4 x 4" (100mm) castors 4 x pocket handles
DIMENSIONS (inc wheels)	(W) 1067mm x (H) 558mm x (D) 780mm (908mm) (W) 42ins x (H) 22ins x (D) 30.7ins (35.7ins)
WEIGHT	77.5kg (170.5lbs)



THH

ALL DETAIL TYPICAL TO BOTH ENDS

Notes

- (1) Measured on-axis in half space at 2 metres, then referred to 1 metre.
- (2) AES Standard ANSI S4.26-1984.
- (3) Measured in half space at 2 metres with 1 watt input, using band limited pink noise, then referred to 1 metre.
- (4) Measured in half space at 2 metres using band limited pink noise, then referred to 1 metre.
- (5) Measured on-axis in open (4π) space at 2 metres, then referred to 1 metre.
- (6) Measured in open (4π) space at 2 metres with 1 watt input, using band limited pink noise, then referred to 1 metre.
- (7) Measured in open (4π) space at 2 metres using band limited pink noise, then referred to 1 metre.
- (8) Measured in open (4π) space at 2 metres with 2.83V input, using band limited pink noise, then referred to 1 metre.
- (9) Calculated at 1 metre.





Martin Audio Limited

Century Point

Halifax Road

Cressex Business Park

High Wycombe

Buckinghamshire

HP12 3SL

England

FOR SALES ENQUIRIES:

UK

Telephone: +44 (0)1494 535312

E-mail: info@martin-audio.com

NORTH AMERICA

Telephone: 818 649 7776

TH
SERIES

THREE-WAY, BI-AMP,
HIGH PERFORMANCE
LOUDSPEAKER SYSTEMS

www.martin-audio.com

All information is Copyright © 2023 Martin Audio Ltd.

Martin Audio, the Martin Audio logo and Hybrid are registered trademarks of Martin Audio Ltd. in the United Kingdom, United States and other countries; all other Martin Audio trademarks are the property of Martin Audio Ltd.



Unite Your Audience
The Martin Audio Experience

Version 2.1