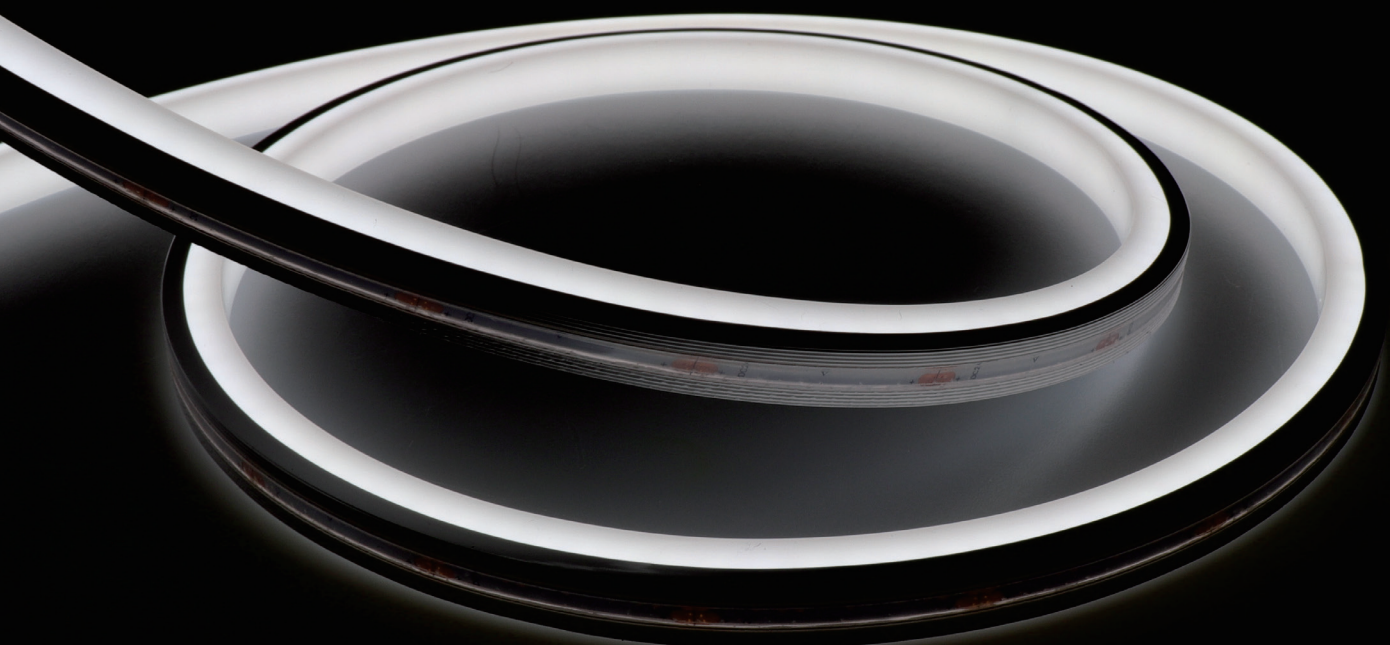


PROTECH LED

be creative



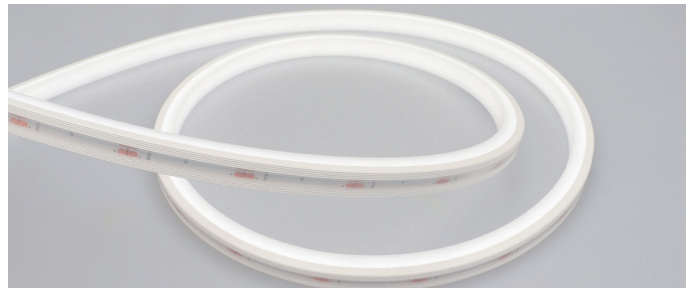
LED NEON FLEX SPECIFICATION

AN-T1010



AN-T1010

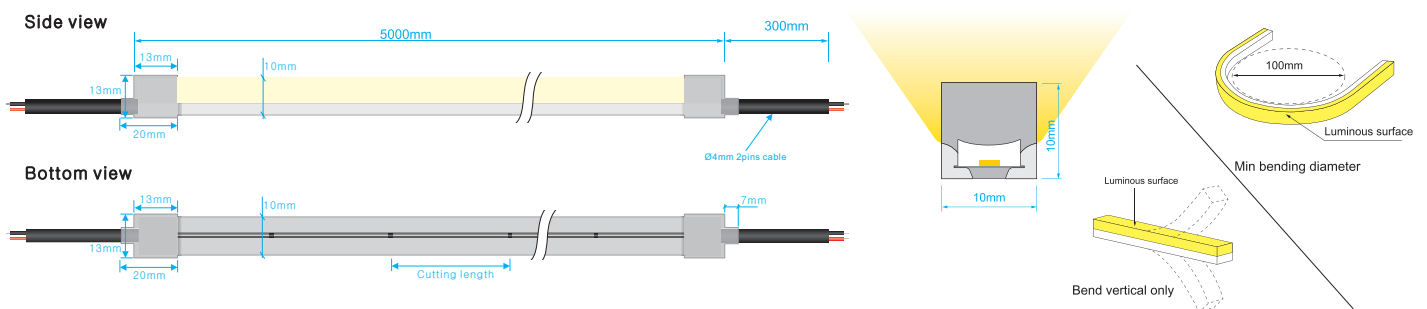
Regular power 5W/m and 10W/m for option
 Max length 5 meters with one end power
 Eight CCT optional from 2100K to 6000K



2100K
2400K
2700K
3000K
3500K
4000K
5000K
6000K



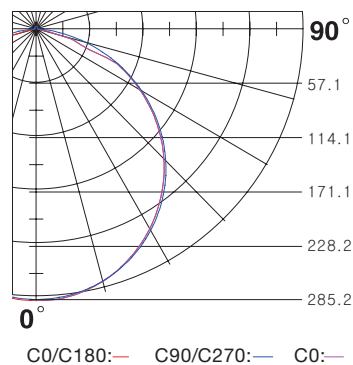
DIMENSIONS & WATERPROOF



PRODUCT SPECIFICATION

Voltage	DC24 V
CRI/Ra	>90
Ambient temperature	-25°C~45°C
Color Type	Cutting length (mm)
Single color	35.7 mm

POLAR CURVE (The data base on 10W6000K)



WHITE COLOR PARAMETERS

	CCT (K)	Low power (lm/m)	(5w/m) (max length)	High power (lm/m)	(10w/m) (max length)
W21	2000-2200K	332.5	5m	644.1	5m
W24	2300-2500K	354.8	5m	684.7	5m
W27	2600-2800K	380.2	5m	737.9	5m
W30	2900-3100K	401.6	5m	785.9	5m
W35	3400-3700K	371.3	5m	718.7	5m
W40	3800-4300K	429.6	5m	828.8	5m
W50	4800-5300K	427.6	5m	827.7	5m
W60	5900-6400K	419.0	5m	810.6	5m
R	Red	153.7	5m	331.6	5m
G	Green	512.7	5m	920.8	5m
B	Blue	93.96	5m	173.6	5m
Y	Yellow	127.4	5m	268.1	5m
P	Pink	179.0	5m	347.5	5m

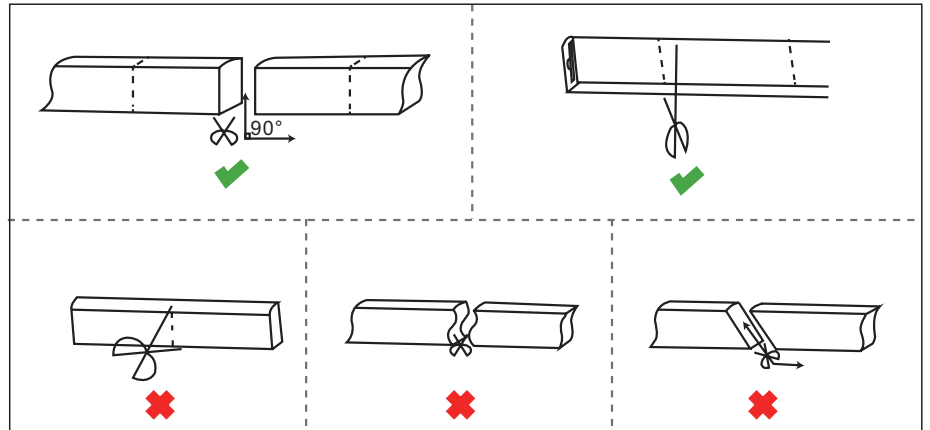


AN-T1010

CUTTING METHOD

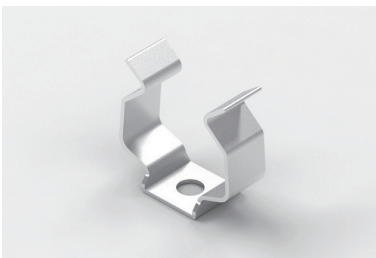


Remark: The bottom of the led strip has transparent window, the black marker is the cutting position



MOUNTING ACCESSORY

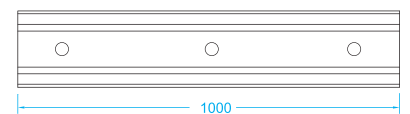
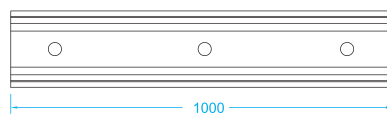
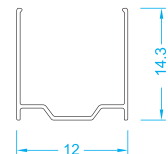
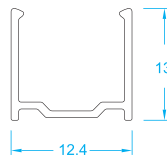
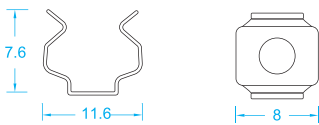
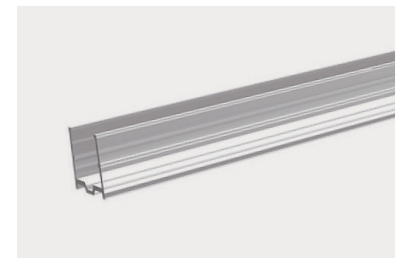
Stainless Steel Mounting clips



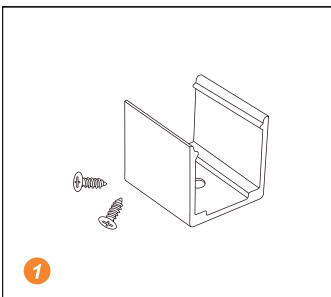
Aluminium Profile



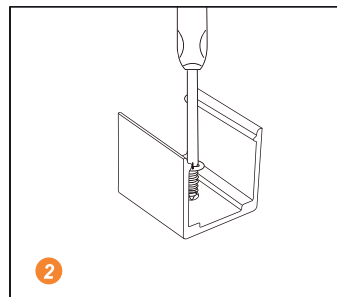
Transparent Plastic Groove



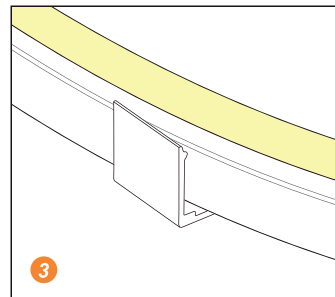
INSTALLATION



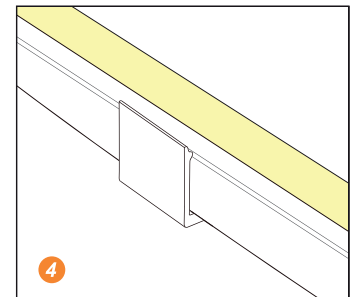
1 Prepare the screws and mounting clips



2 Adjust the fixed clips to the appropriate place, use a screwdriver to fix the screw.



3 Put the light emitting surface upwards, then insert the LED strip into the fixed clips.



4 Fix NEON strip completely into the fixed clip.

