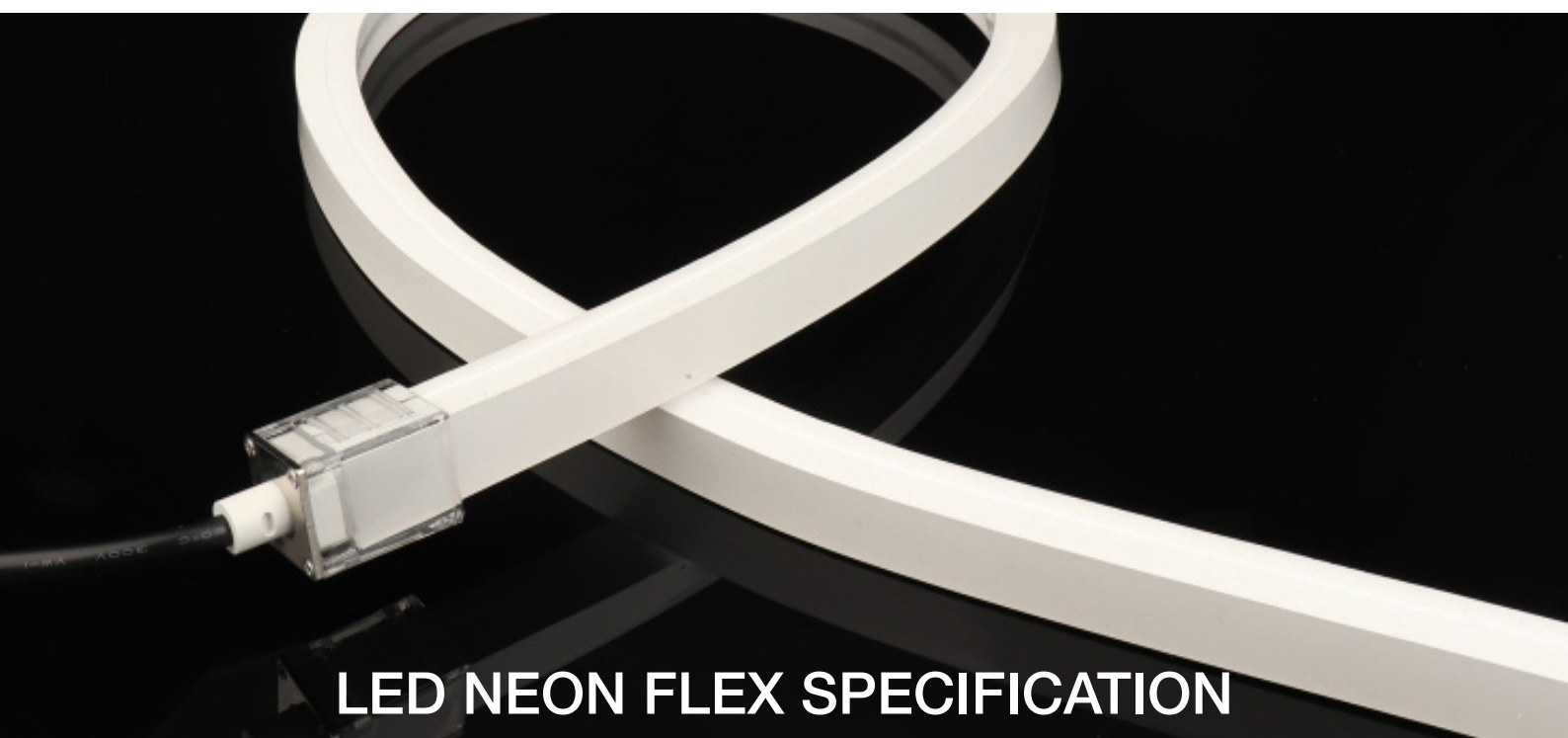


PROTECH LED

be creative



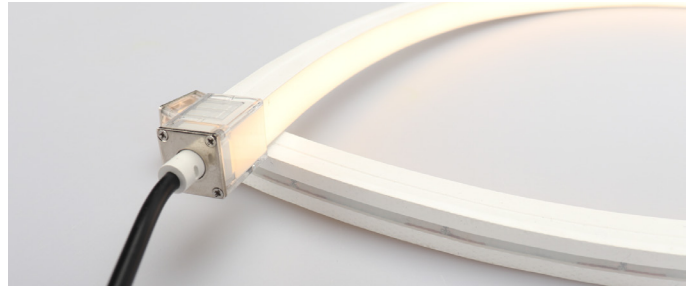
LED NEON FLEX SPECIFICATION

AN-T1615

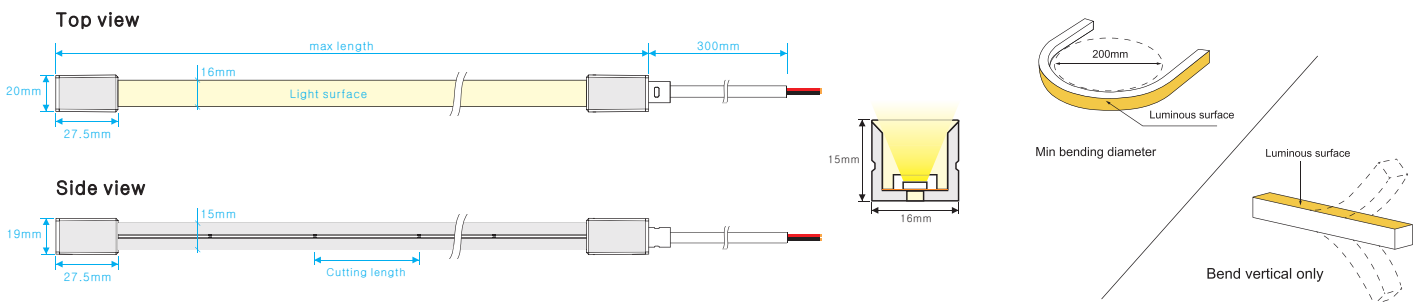


AN-T1615

Regular power 5W/m, 10W/m and 15W/m for option
 Max length 35 meters with one end power
 Soldering-free and silicone end cap
 Eight CCT optional from 2100K to 6150K



DIMENSIONS & WATERPROOF

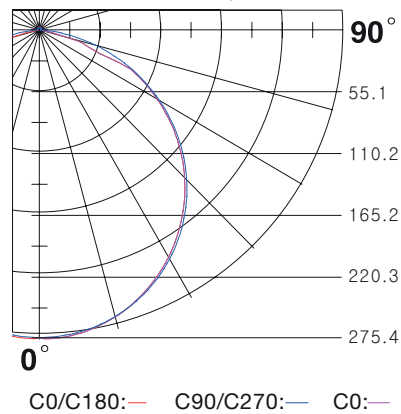


PRODUCT SPECIFICATION

Voltage	DC24 V
CRI/Ra	>90
Ambient temperature	-25°C~45°C
Color Type	Cutting length (mm)
Single color	50 mm
Tunable white	62.5 mm
RGB color	CV: 83.3 mm / CC: 125 mm
RGBW color	CV: 83.3 mm / CC: 125 mm

Note: CV means Constant Voltage, CC means Constant Current.

POLAR CURVE (The data base on 15W6000K)



WHITE COLOR PARAMETERS

	CCT (K)	Low power (5w/m) (lm/m)	(5w/m) (max length)	Medium power (10w/m) (lm/m)	(10w/m) (max length)	High power (15w/m) (lm/m)	(15w/m) (max length)
W21	2000-2200K	240.3	27 m	459.9	17 m	627.5	14 m
W24	2300-2500K	242.0	27 m	468.1	17 m	659.7	14 m
W27	2600-2800K	285.8	27 m	552.7	17 m	771.5	14 m
W30	2900-3100K	286.3	27 m	539.3	17 m	766.9	14 m
W35	3400-3700K	300.7	27 m	583.9	17 m	815.8	14 m
W40	3800-4300K	294.1	27 m	573.4	17 m	807.0	14 m
W50	4800-5300K	297.8	27 m	570.3	17 m	793.9	14 m
W60	5900-6400K	293.9	27 m	572.9	17 m	782.6	14 m

AN-T1615

TUNABLE COLOR PARAMETERS

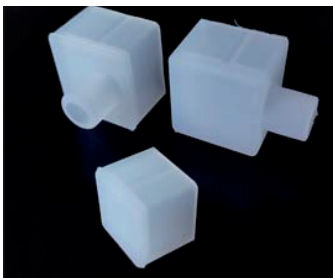
	CCT (K)	Low power (lm/m)	(5w/m) (max length)	Medium power (lm/m)	(10w/m) (max length)	High power (lm/m)	(15w/m) (max length)
TW	2200-6000K	250.0	5 m	495.0	5 m	740.0	5 m

RGB & RGBW COLOR PARAMETERS

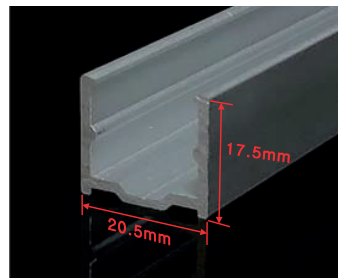
	Color	Low power (lm/m)	(5w/m) (max length)	Medium power (lm/m)	(10w/m) (max length)	High power (lm/m)	(15w/m) (max length)
R	Red	111.6	35 m	237.5	23 m	323.2	18 m
G	Green	308.0	27 m	548.2	17 m	697.4	14 m
B	Blue	57.0	27 m	106.9	17 m	148.6	14 m
Y	Yellow	25.6	35 m	44.4	23 m	61.0	18 m
P	Pink	116.7	27 m	224.5	17 m	302.2	14 m
RGB-CV	RGB	180.0	5 m	347.0	5 m	480.0	5 m
RGBW-CV	RGBW	210.0	5 m	418.0	5 m	620.0	5 m
RGB-CC	RGB					320.0	13 m
RGBW-CC	RGBW					547.0	10 m

Note: CV means Constant Voltage, CC means Constant Current.

ACCESSORY



IP67 Silicone end cap

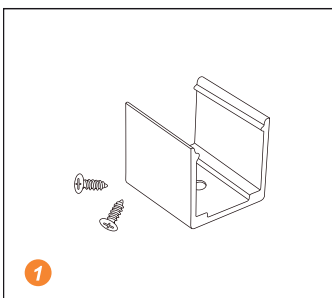


Mounting clip(length: 2cm)
Mounting channel(length: 1m, 2m,3m)

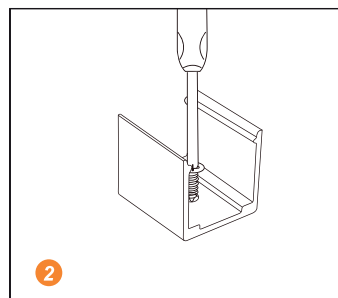


Scissors with angular scale

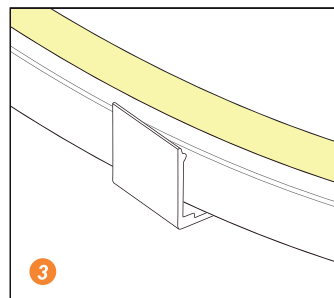
INSTALLATION



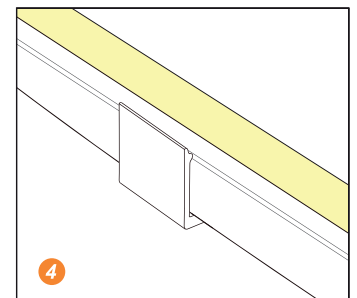
1 Prepare the screws and mounting clips



2 Adjust the fixed clips to the appropriate place, use a screwdriver to fix the screw.



3 Put the light emitting surface upwards, then insert the LED strip into the fixed clips.



4 Fix NEON strip completely into the fixed clip.